

BACHMAN ONE DEPARTURE

**TOP ALTITUDE:
5000**

LITTLE ROCK
113.9 IIT
Chan 86

TEXARKANA
116.3 TXK
Chan 110

BONHAM
114.6 BYP
Chan 93

COWBOY
116.2 CVE
Chan 109

MAVERICK
113.1 TTT
Chan 78

LOCALIZER 111.1
I-DPX
Chan 48

BELCHER
117.4 EIC
Chan 121

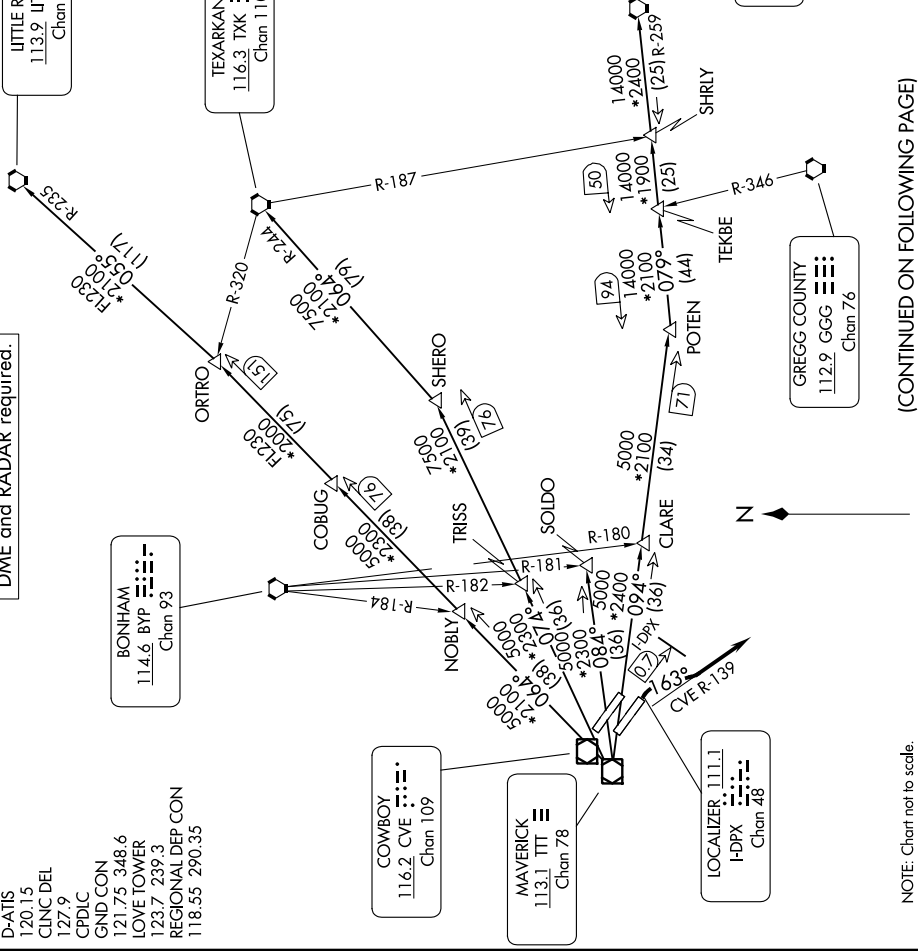
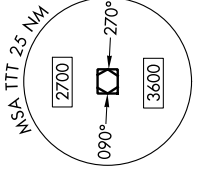
GREGG COUNTY
112.9 GGG
Chan 76

DME and RADAR required.

D-ATIS 120.15
CLNC DEL 127.9
CPDIC
GND CON 121.75 348.6
LOVE TOWER 123.7 239.3
REGIONAL DEP CON 118.55 290.35

TAKEOFF MINIMUMS
Rwys 13L, 31L/R: NA - Noise Abatement.
Rwy 13R: Standard with minimum climb of 482'/NM to 1700.

NOTE: This DP is to be used only upon assignment by Love Tower normally between 2100-0600 LCL time.
NOTE: SOLDO Transition: ATC assigned.
NOTE: BELCHER Transition: For aircraft inbound to Jackson, Monroe and Shreveport terminal areas.



(CONTINUED ON FOLLOWING PAGE)

NOTE: Chart not to scale.