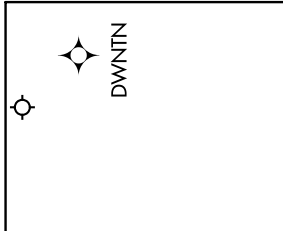


DRYYE TWO ARRIVAL (RNAV)

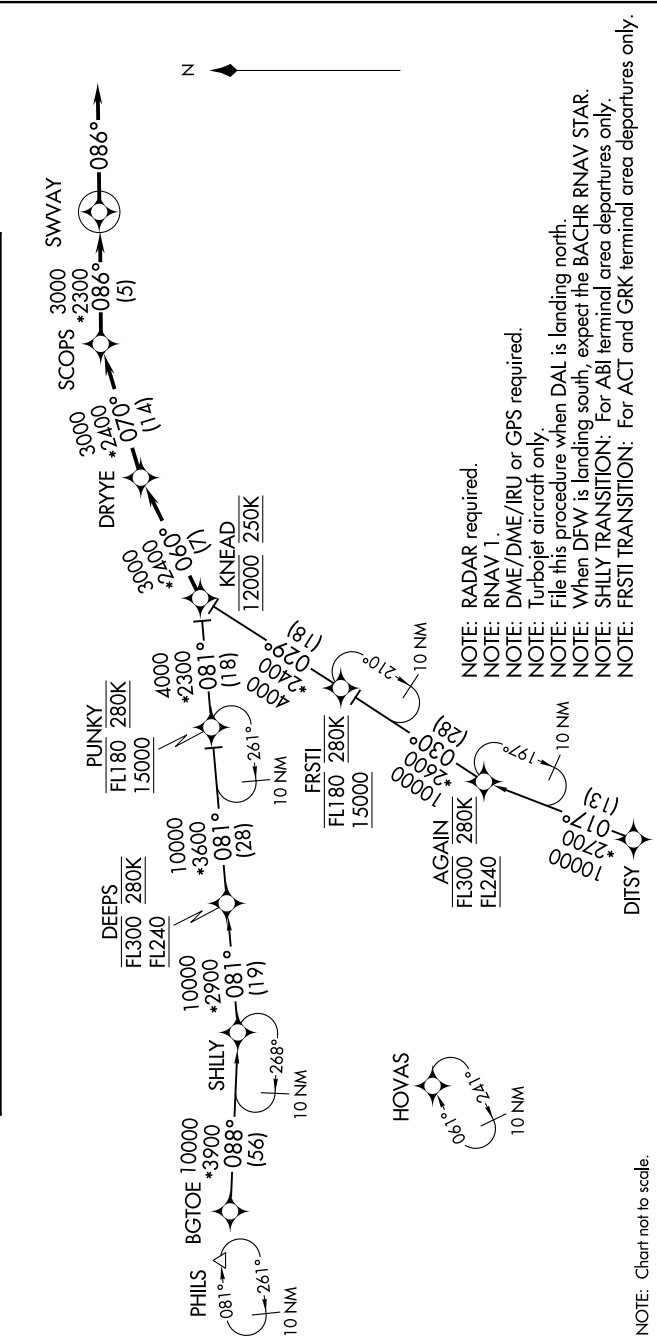
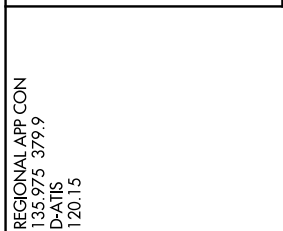
SC-2, 11 JUL 2024 to 08 AUG 2024



ARRIVAL ROUTE DESCRIPTION

BGTOE TRANSITION (BGTOE.DRYYE2)
DITSY TRANSITION (DITSY.DRYYE2)
FRSTI TRANSITION (FRSTI.DRYYE2)
SHILLY TRANSITION (SHILLY.DRYYE2)

From KNEAD on track 060° to DRYYE, then on track 070° to SCOPS, then on track 086° to SWWAY, then on track 086°. Expect RADAR vectors to final approach course.



- NOTE: RADAR required.
- NOTE: RNAV 1.
- NOTE: DME/DME/IRU or GPS required.
- NOTE: Turbojet aircraft only.
- NOTE: File this procedure when DAL is landing north.
- NOTE: When DFW is landing south, expect the BACHR RNAV STAR.
- NOTE: SHILLY TRANSITION: For ABI terminal area departures only.
- NOTE: FRSTI TRANSITION: For ACT and GRK terminal area departures only.

DRYYE TWO ARRIVAL (RNAV)

NOTE: Chart not to scale.

SC-2, 11 JUL 2024 to 08 AUG 2024