

LOC/DME I-LVF 111.1 Chan 48	APP CRS 313°	Rwy Idg TDZE 477 Apt Elev 487	8000
--	------------------------	---	-------------

ILS or LOC RWY 31L

DALLAS LOVE FLD (DAL)

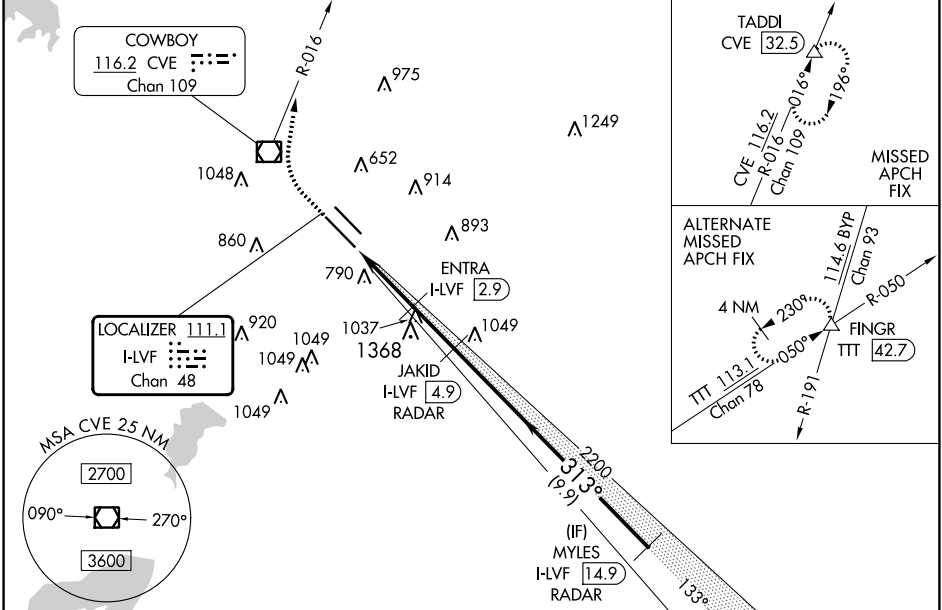
DME required.
RADAR required for procedure entry.

Simultaneous approach authorized.

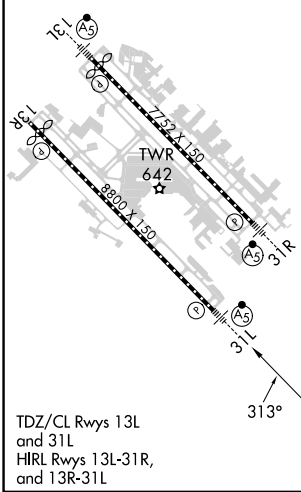
MALS/R (AS)

MISSED APPROACH: Climb to 4000 direct CVE VOR/DME and on CVE R-016 to TADDI/CVE 32.5 DME and hold.

D-ATIS 120.15	REGIONAL APP CON NORTH 124.3 282.275 SOUTH 125.2 343.65	LOVE TOWER 123.7 239.3	GND CON 121.75 348.6	CLNC DEL 127.9	CPDLC
-------------------------	---	----------------------------------	--------------------------------	--------------------------	-------



ELEV 487	D	TDZE 477
-----------------	----------	-----------------



TDZ/CL Rwy 13L and 31L
HIRL Rwy 13L-31R, and 13R-31L

4000	CVE	CVE R-016	TADDI	JAKID I-LVF (4.9) RADAR	MYLES I-LVF (14.9) RADAR
I-LVF DME ANTENNA	I-LVF (0.2)	I-LVF (2.3)	ENTRA I-LVF (2.9)	2200	2500
-2.5 NM		-0.6 NM		-2.1 NM	
-9.9 NM					
CATEGORY	A	B	C	D	
S-ILS 31L	677/18		200 (200-½)		
S-LOC 31L	1340/24 863 (900-½)	1340/40 863 (900-¾)	1340-2	863 (900-2)	
CIRCLING	1340-1¼	853 (900-1¼)	1340-2½ 853 (900-2½)	1520-3 1033 (1100-3)	

32°51'N-96°51'W

DALLAS LOVE FLD (DAL) ILS or LOC RWY 31L

SC-2, 11 JUL 2024 to 08 AUG 2024

SC-2, 11 JUL 2024 to 08 AUG 2024