

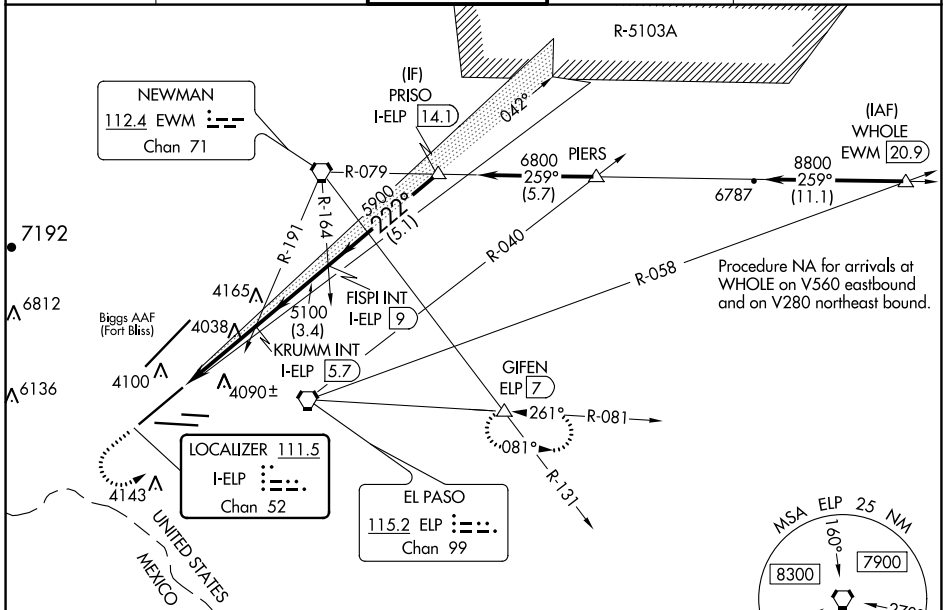
LOC/DME I-ELP 111.5 Chan 52	APP CRS 222°	Rwy Idg TDZE Apt Elev	12020 3950 3962
---	------------------------	-----------------------------	--

ILS or LOC RWY 22

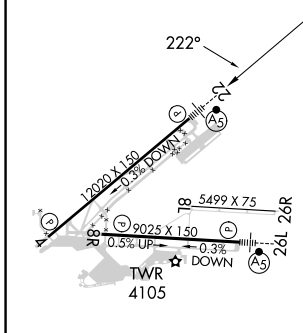
EL PASO INTL (ELP)

RADAR required when R-5103 in use.		MALSR 	MISSED APPROACH: Climb to 4600 then climbing left turn to 8000 on heading 050° and on ELP VORTAC R-081 to GIFEN INT/ELP 7 DME and hold, continue climb-in-hold to 8000.
Circling NA for Cat D and E north of Rwy 26R and northwest of Rwy 4. For inop ALS, increase S-ILS 22 Cat E visibility to RVR 4000, S-LOC 22 ASR Cats C/D/E to RVR 5500.			

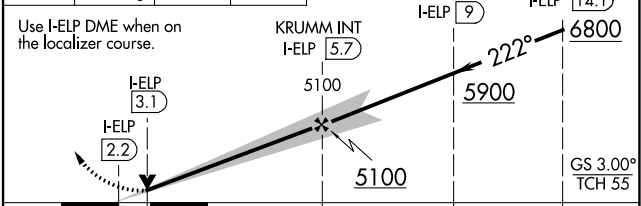
D-ATIS 120.0 254.3	EL PASO APP CON 124.25 298.85	EL PASO TOWER 118.3 239.275	GND CON 121.9 348.6	CLNC DEL 125.0 379.1
------------------------------	---	---------------------------------------	-------------------------------	--------------------------------



ELEV 3962	D	TDZE 3950
-----------	----------	-----------



4600	8000	ELP R-081	GIFEN	VGSI and ILS glidepath not coincident (VGSI Angle 3.00/TCH 70).
------	------	-----------	-------	---



MIRL Rwy 8L-26R	REIL Rwys 4 and 8R	HIRL Rwys 4-22 and 8R-26L	FAF to MAP 3.4 NM					
Knots	60	90	120	150	180			
Min:Sec	3:24	2:16	1:42	1:22	1:08			
C CIRCLING	4420-1 458 (500-1)	4440-1 478 (500-1)	4480-1½ 518 (600-1½)	4680-2¼ 718 (800-2¼)	4700-2½ 738 (800-2½)			

SC-3, 11 JUL 2024 to 08 AUG 2024

SC-3, 11 JUL 2024 to 08 AUG 2024