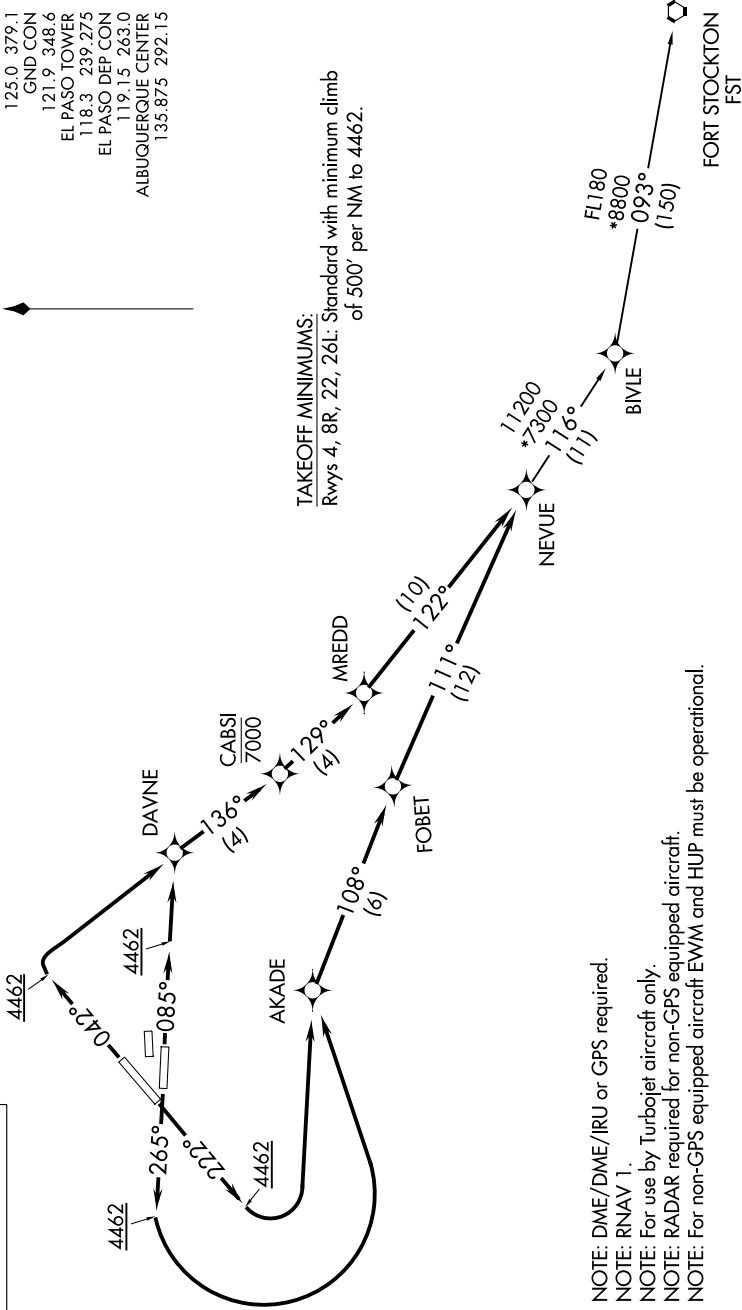


# NEVUE THREE DEPARTURE(RNAV)

D-ATIS  
120.0 254.3  
CLNC DEL  
125.0 379.1  
GND CON  
121.9 348.6  
EL PASO TOWER  
118.3 239.275  
EL PASO DEP CON  
119.15 263.0  
ALBUQUERQUE CENTER  
135.875 292.15



TAKEOFF MINIMUMS:  
Rwys 4, 8R, 22, 26L: Standard with minimum climb  
of 500' per NM to 4462.



**TOP ALTITUDE:**  
Assigned by ATC

- NOTE: DME/DME/IRU or GPS required.
- NOTE: RNAV 1.
- NOTE: For use by Turbojet aircraft only.
- NOTE: RADAR required for non-GPS equipped aircraft.
- NOTE: For non-GPS equipped aircraft EWM and HUP must be operational.

NOTE: Chart not to scale.

(NARRATIVE ON FOLLOWING PAGE)