

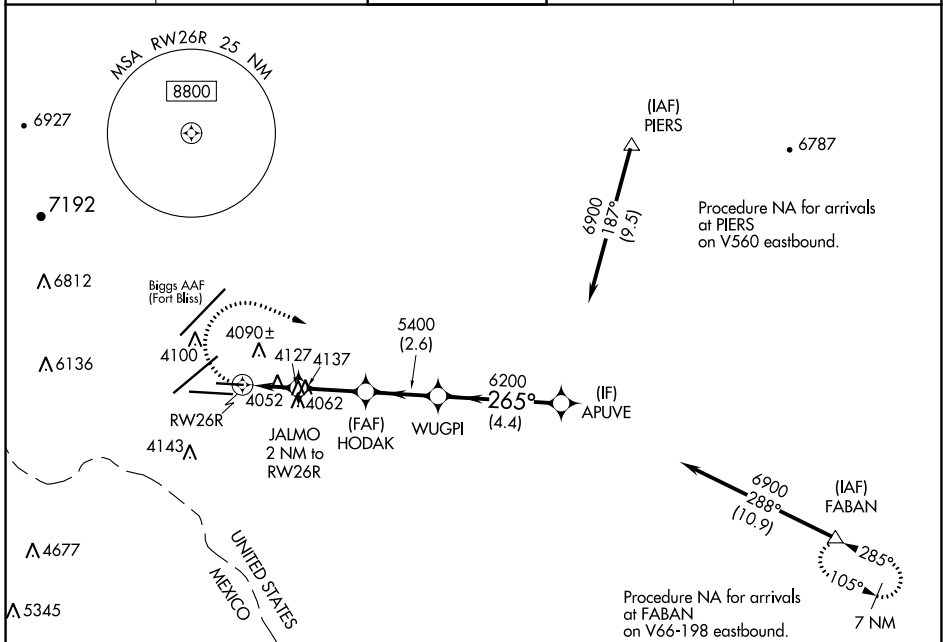
APP CRS	Rwy Idg	<b>5499</b>
<b>265°</b>	TDZE	<b>3950</b>
	Apt Elev	<b>3962</b>

# RNAV (GPS) RWY 26R

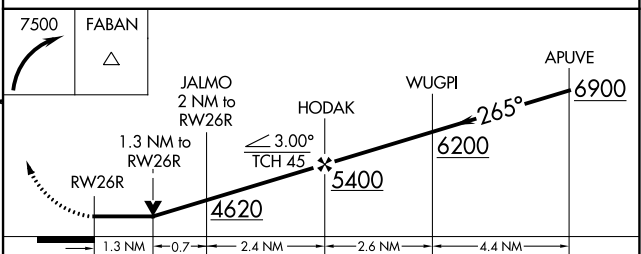
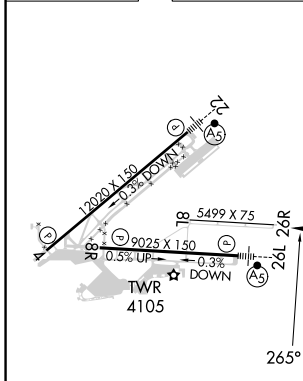
EL PASO INTL (ELP)

RNP APCH-GPS		MISSED APPROACH: Climbing right turn 7500 direct FABAN and hold.		
<p><b>ASR</b> Circling NA for Cat D north of Rwy 26R and northwest of Rwy 4. Rwy 26R helicopter visibility reduction below ¼ SM NA.</p>				

D-ATIS	EL PASO APP CON	EL PASO TOWER	GND CON	CLNC DEL
<b>120.0 254.3</b>	<b>124.25 298.85</b>	<b>118.3 239.275</b>	<b>121.9 348.6</b>	<b>125.0 379.1</b>



ELEV 3962	<b>D</b>	TDZE 3950
-----------	----------	-----------



CATEGORY	A	B	C	D
LNAV MDA	4400-1	450 (500-1)	4400-1 3/8	450 (500-1 3/8)
<b>C</b> CIRCLING	4420-1 458 (500-1)	4440-1 478 (500-1)	4480-1 1/2 518 (600-1 1/2)	4680-2 1/4 718 (800-2 1/4)

MIRL Rwy 8L-26R  
REIL Rwys 4 and 8R  
HIRL Rwys 4-22 and 8R-26L

SC-3, 11 JUL 2024 to 08 AUG 2024

SC-3, 11 JUL 2024 to 08 AUG 2024