

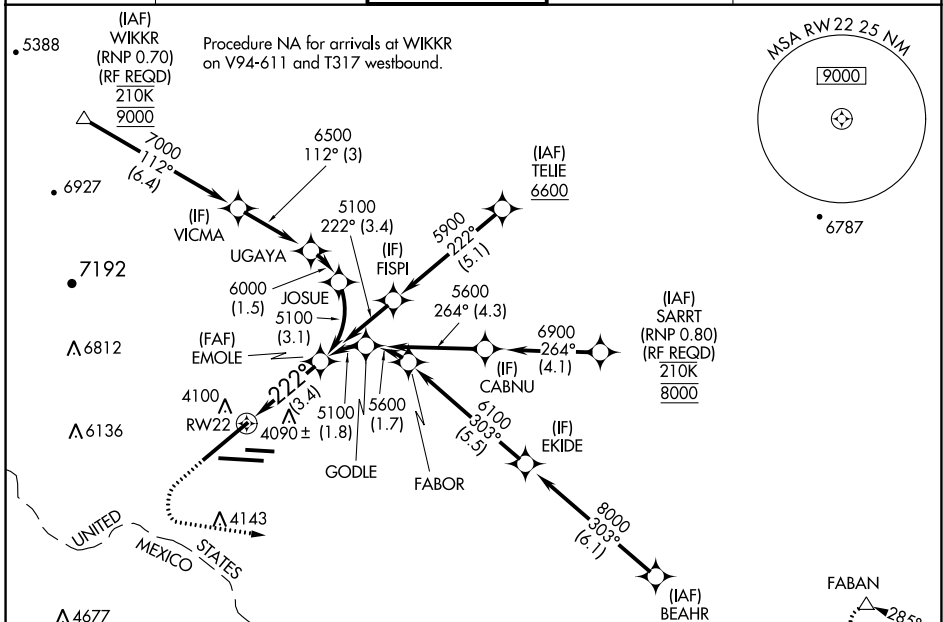
APP CRS	Rwy Idg	12020
222°	TDZE	3950
	Apt Elev	3962

RNAV (RNP) Z RWY 22

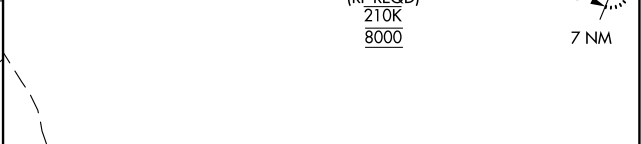
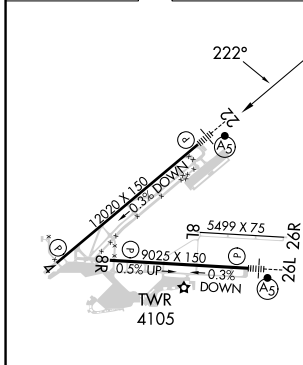
EL PASO INTL (ELP)

RNP AR APCH.	MALSR	MISSED APPROACH: Climb to 4400 then climbing left turn to 7500 direct FABAN and hold.
▼ For uncompensated Baro-VNAV systems, procedure NA below -8°C ASR or above 54°C. For inop ALS, increase RNP 0.10 all Cats visibility to RVR 4000 and RNP 0.30 all Cats visibility to RVR 4500.		

D-ATIS	EL PASO APP CON	EL PASO TOWER	GND CON	CLNC DEL
120.0 254.3	124.25 298.85	118.3 239.275	121.9 348.6	125.0 379.1



ELEV	3962	D	TDZE	3950
------	-------------	----------	------	-------------



VGSi and RNAV glidepath not coincident (VGSi Angle 3.00/TCH 70).

See planview for multiple IF locations.

CATEGORY	A	B	C	D
RNP 0.10 DA		4200/24	250 (300-1/2)	
RNP 0.30 DA		4270/27	320 (400-5/8)	

MIRL Rwy 8L-26R
REIL Rws 4 and 8R
HIRL Rws 4-22 and 8R-26L

AUTHORIZATION REQUIRED

SC-3, 11 JUL 2024 to 08 AUG 2024

SC-3, 11 JUL 2024 to 08 AUG 2024