

WAAS CH 82308 W21A	APP CRS 207°	Rwy Idg TDZE 1276 Apt Elev 1276
----------------------------------------	------------------------	-----------------------------------------------------

RNAV (GPS) RWY 21

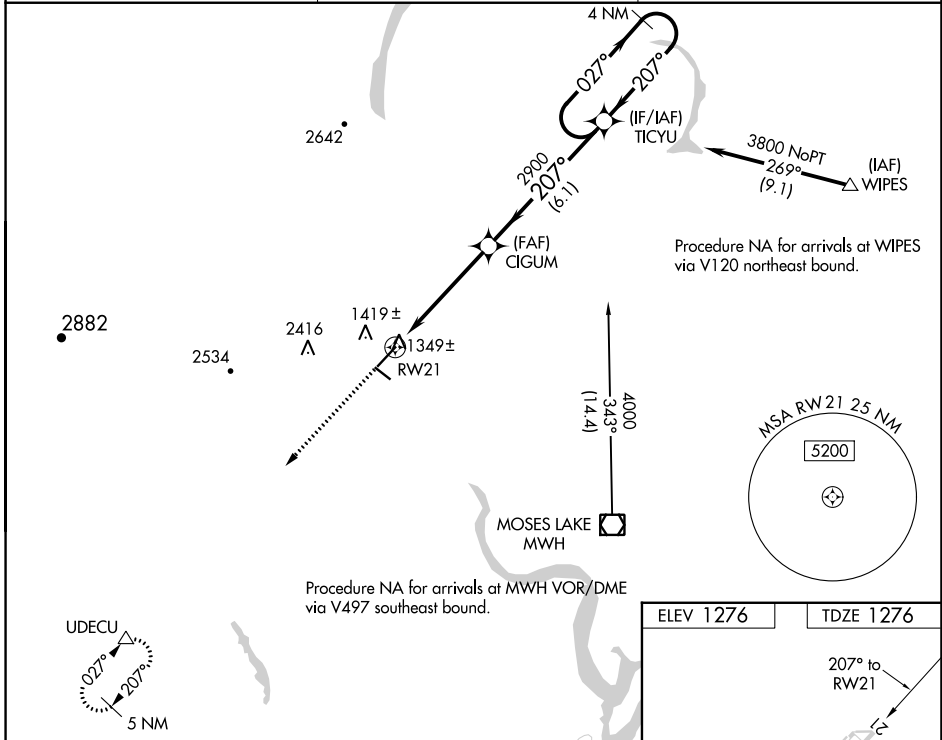
EPHRATA MUNI (EPH)

RNP APCH.

▼ For uncompensated Baro-VNAV systems, LNAV/VNAV NA below -17°C or above 46°C. VDP and Baro-VNAV NA when using Moses Lake/Grant County Intl altimeter setting. When local altimeter setting not received, use Moses Lake/Grant County Intl altimeter setting and increase all DA/MDA 40 feet; increase visibility LPV all Cats, and LNAV Cats C and D ¼ SM.

MISSED APPROACH: Climb to 4500 direct UDECU and hold.

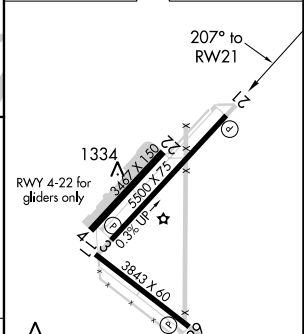
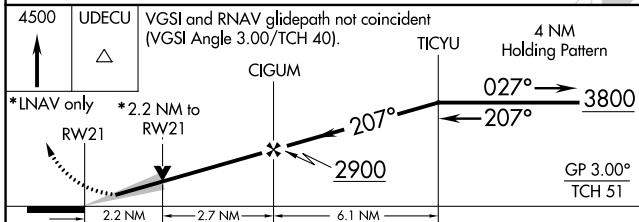
ASOS 135.775	GRANT COUNTY APP CON * 126.4 379.95	UNICOM 122.8 (CTAF) 0
------------------------	-----------------------------------------------	---------------------------------



NW-1, 11 JUL 2024 to 08 AUG 2024

NW-1, 11 JUL 2024 to 08 AUG 2024

ELEV 1276	TDZE 1276
-----------	-----------



CATEGORY	A	B	C	D
LPV DA		1526-¾	250 (300-¾)	
LNAV/VNAV DA		2171-4	895 (900-4)	
LNAV MDA	2020-1 744 (800-1)	2020-1¼ 744 (800-1¼)	2020-2¼ 744 (800-2¼)	2020-2½ 744 (800-2½)

Λ 1296

REIL Rwy 3, 11, 21 and 29 0

MIRL Rwy 11-29 and 3-21 0