

WAAS CH <b>50208</b> <b>W03A</b>	APP CRS <b>027°</b>	Rwy ldg <b>5500</b> TDZE <b>1269</b> Apt Elev <b>1276</b>
--	------------------------	---

# RNAV (GPS) RWY 3

EPHRATA MUNI (EPH)

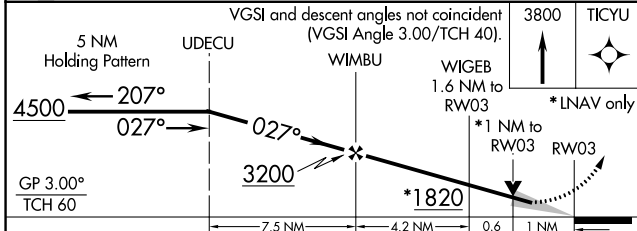
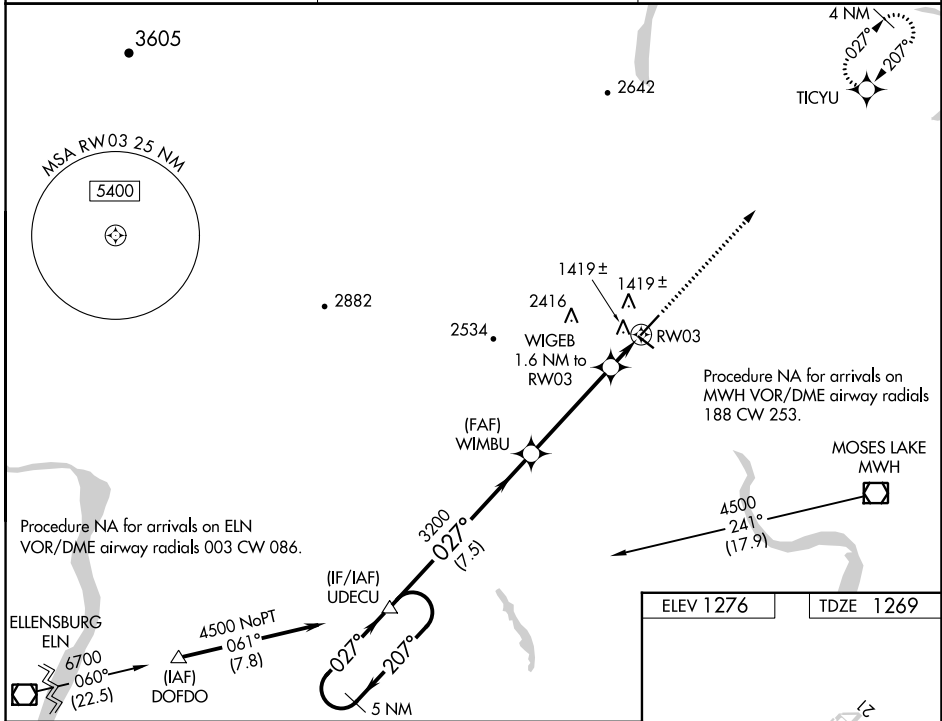
RNP APCH.  
 ⚠ For uncompensated Baro-VNAV systems, LNAV/VNAV NA below -17°C or above 46°C. VDP and Baro-VNAV NA when using Moses Lake/Grant County Intl altimeter setting. When local altimeter setting not received, use Moses Lake/Grant County Intl altimeter setting and increase all DA/MDA 40 feet and LNAV Cat C and D visibility 1/4 SM.

MISSED APPROACH: Climb to 3800 direct TICYU and hold.

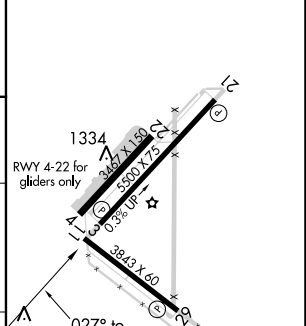
ASOS  
**135.775**

GRANT COUNTY APP CON \*  
**126.4 379.95**

UNICOM  
**122.8 (CTAF) 0**



ELEV 1276	TDZE 1269
-----------	-----------



CATEGORY	A	B	C	D
LPV DA	1519-1		250 (300-1)	
LNAV/VNAV DA	1689-1/2		420 (500-1/2)	
LNAV MDA	1680-1	411 (500-1)	1680-1/4	411 (500-1/4)

REIL Rwy 3, 11, 21 and 29 0  
 MIRL Rwy 11-29 and 3-21 0

NW-1, 11 JUL 2024 to 08 AUG 2024

NW-1, 11 JUL 2024 to 08 AUG 2024