

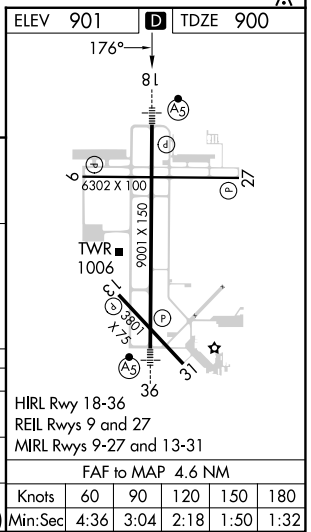
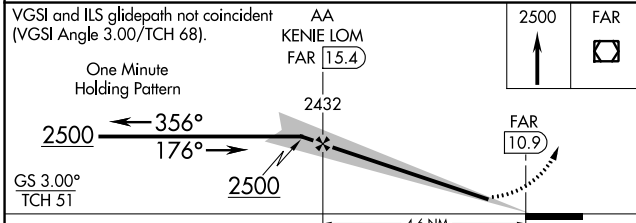
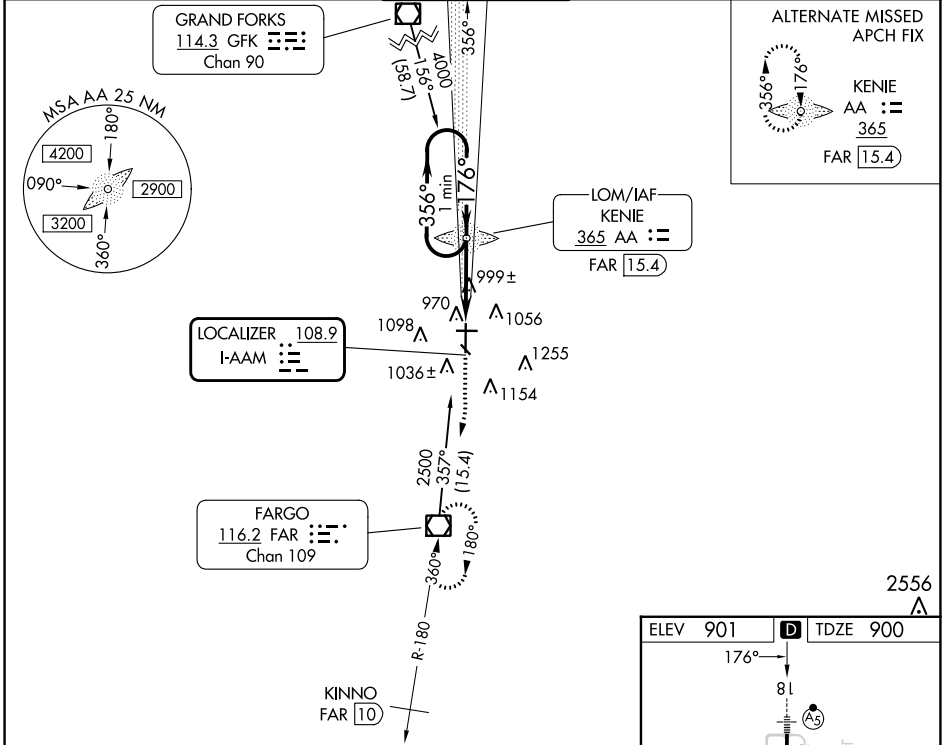
LOC I-AAM <b>108.9</b>	APP CRS <b>176°</b>	Rwy Idg TDZE Apt Elev <b>9001</b> <b>900</b> <b>901</b>
---------------------------	------------------------	--

# ILS or LOC RWY 18

HECTOR INTL (FAR)

ADF or DME required for procedure entry.		MALSR 	MISSED APPROACH: Climb to 2500 direct FAR VOR/DME and hold.
<p></p> <p>For inop MALSR, increase S-ILS 18 Cat E visibility to RVR 4000, and S-LOC 18 Cat E visibility to RVR 5000.</p> <p>* Visibility Cat A/B/C/D RVR 1800 authorized with the use of FD or AP or HUD to DA.</p>			

ATIS <b>124.5 379.2</b>	FARGO APP CON <b>120.4 377.15</b>	FARGO TOWER <b>133.8 290.4</b>	GND CON <b>121.9 348.6</b>	CLNC DEL <b>121.9 348.6</b>
----------------------------	--------------------------------------	-----------------------------------	-------------------------------	--------------------------------



CATEGORY	A	B	C	D	E
S-ILS 18*	1100/24 200 (200-1/2)				
S-LOC 18	1260/24	360 (400-1/2)	1260/40		360 (400-3/4)
CIRCLING	1380-1	479 (500-1)	1520-1 3/4 619 (700-1 3/4)	1620-2 1/4 719 (800-2 1/4)	1620-2 1/2 719 (800-2 1/2)
HRL Rwy 18-36 REIL Rws 9 and 27 MRL Rws 9-27 and 13-31 FAF to MAP 4.6 NM					
Knots					
Min:Sec					
60 90 120 150 180					
4:36 3:04 2:18 1:50 1:32					

NC-1, 11 JUL 2024 to 08 AUG 2024

NC-1, 11 JUL 2024 to 08 AUG 2024