

LOC I-FMY <b>110.7</b>	APP CRS <b>051°</b>	Rwy Idg <b>5548</b> TDZE <b>15</b> Apt Elev <b>17</b>
---------------------------	------------------------	---

# ILS or LOC RWY 5

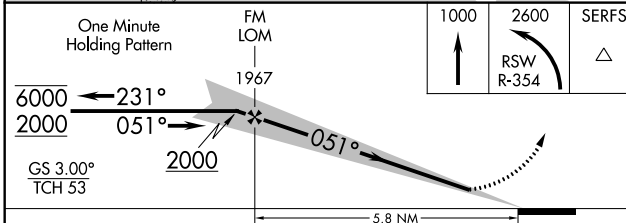
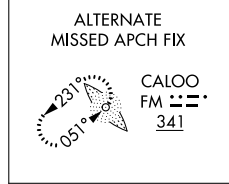
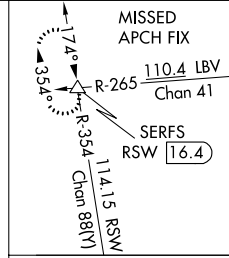
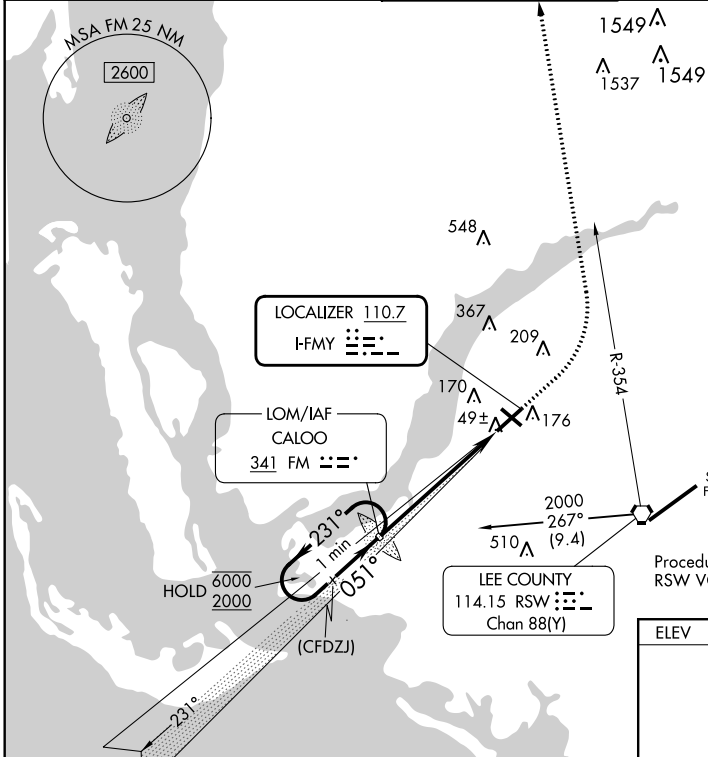
PAGE FLD (FMY)

ADF or RADAR required for procedure entry. ADF required for LOC only.

⚠ When Circling to Rwy 31 at night, operational VGSI required, remain on or above VGSI glidepath until threshold. Rwy 5 helicopter visibility reduction below ¾ SM NA.

MISSED APPROACH: Climb to 1000 then climbing left turn to 2600 on RSW R-354 to SERFS INT/RSW 16.4 DME and hold.

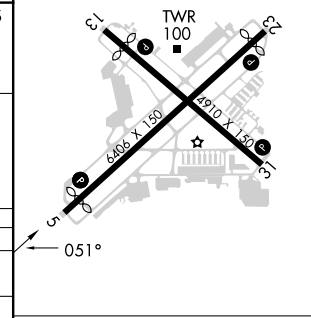
ATIS <b>123.725</b>	FORT MYERS APP CON ★ <b>125.15 306.2</b> (Rwys 5, 13) <b>126.8 306.2</b> (Rwys 23, 31)	PAGE TOWER ★ <b>119.0</b> (CTAF) <b>0 306.95</b>	GND CON <b>121.7</b>	CLNC DEL <b>121.7</b>
------------------------	--	---	-------------------------	--------------------------



Southwest Florida Intl  
Procedure NA for arrivals on RSW VORTAC airway radial 312.

ELEV 17	D	TDZE 15
---------	---	---------

REIL Rwys 5, 13, 23 and 31  
MIRL Rwy 5-23 and 13-31



CATEGORY	A	B	C	D
S-ILS 5	265-1		250 (300-1)	
S-LOC 5	460-1	445 (500-1)	460-1 3/8	445 (500-1 3/8)
CIRCLING	540-1	523 (600-1)	600-1 1/2 583 (600-1 1/2)	680-2 663 (700-2)

FAF to MAP 5.8 NM					
Knots	60	90	120	150	180
Min:Sec	5:48	3:52	2:54	2:19	1:56

SE-3, 11 JUL 2024 to 08 AUG 2024

SE-3, 11 JUL 2024 to 08 AUG 2024