

GARLAND FIVE DEPARTURE

FORT WORTH, TEXAS

SC-2, 11 JUL 2024 to 08 AUG 2024

TOP ALTITUDE: ASSIGNED BY ATC

REGIONAL DEP CON
118.1 306.95 (North)
135.975 379.9 (South)

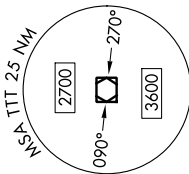
ATIS
120.7

CINC DEL
124.65

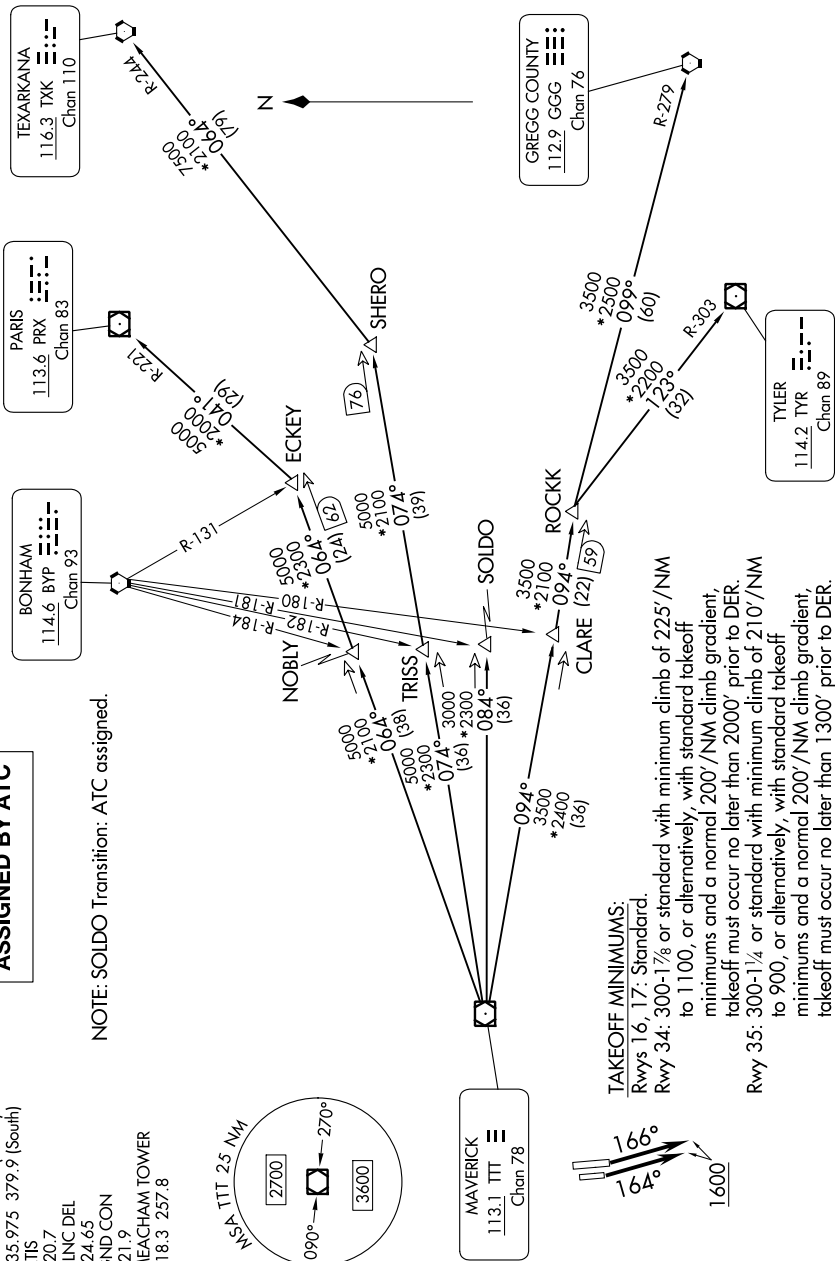
GND CON
121.9

MEACHAM TOWER
118.3 257.8

NOTE: SOLDO Transition: ATC assigned.



RADAR and DME required.



TAKEOFF MINIMUMS:
 Rwy 16, 17: Standard.
 Rwy 34: 300-1¹/₄ or standard with minimum climb of 225'/NM to 1100, or alternatively, with standard takeoff minimums and a normal 200'/NM climb gradient, takeoff must occur no later than 2000' prior to DER.
 Rwy 35: 300-1¹/₄ or standard with minimum climb of 210'/NM to 900, or alternatively, with standard takeoff minimums and a normal 200'/NM climb gradient, takeoff must occur no later than 1300' prior to DER.

NOTE: Chart not to scale.

(CONTINUED ON FOLLOWING PAGE)

GARLAND FIVE DEPARTURE

FORT WORTH, TEXAS

SC-2, 11 JUL 2024 to 08 AUG 2024