

KUSSO ONE DEPARTURE (RNAV)

SC-2, 11 JUL 2024 to 08 AUG 2024

TAKEOFF MINIMUMS

ATIS 120.7

CINC DEL 124.65

GND CON 121.9

MEACHAM TOWER 118.3 257.8

REGIONAL DEP CON 118.1 306.95 (NORTH)

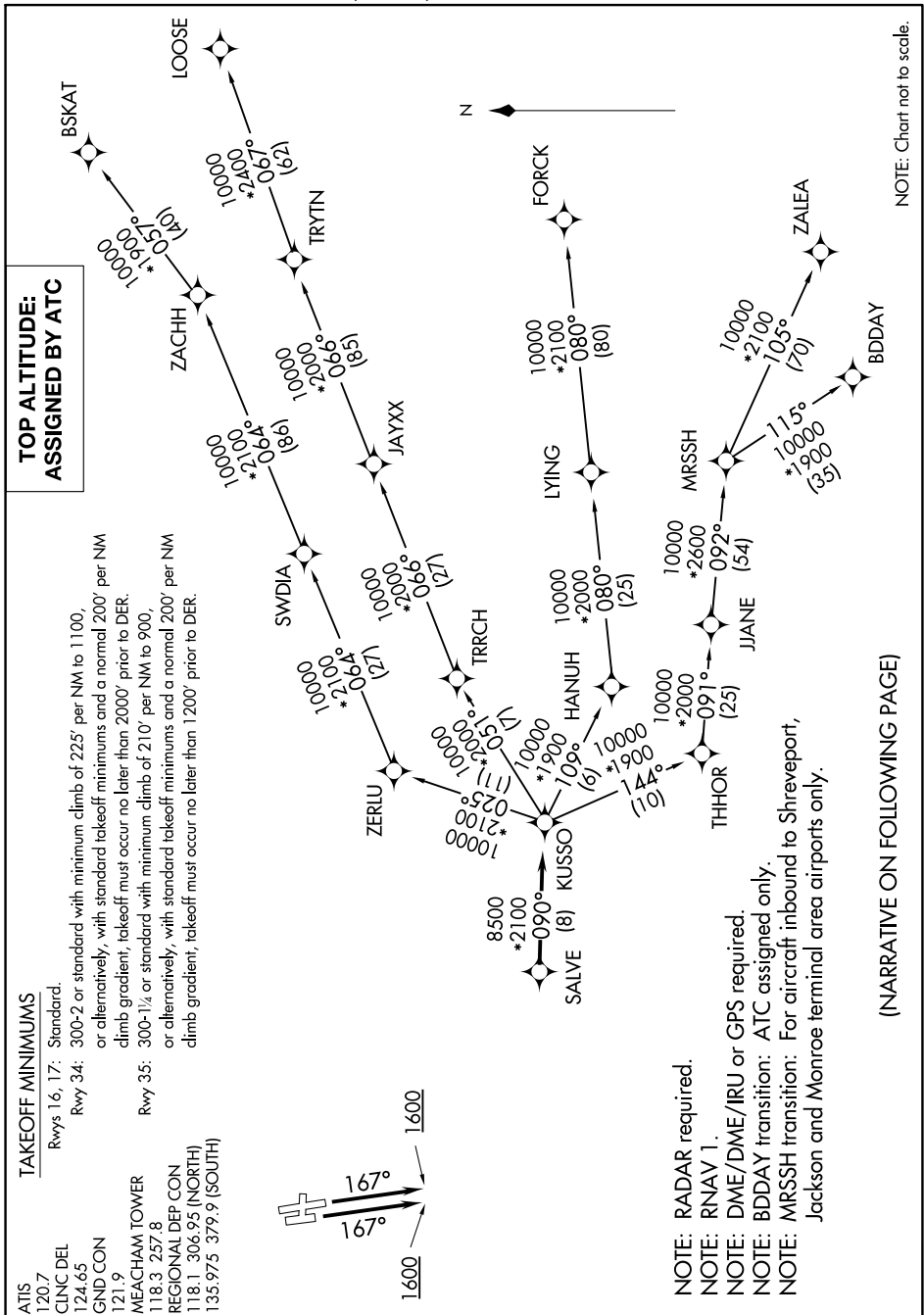
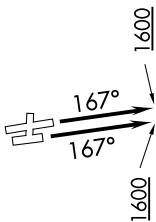
135.975 379.9 (SOUTH)

Rwys 16, 17: Standard.

Rwy 34: 300-2 or standard with minimum climb of 225' per NM to 1100, or alternatively, with standard takeoff minimums and a normal 200' per NM climb gradient, takeoff must occur no later than 2000' prior to DER.

Rwy 35: 300-1/4 or standard with minimum climb of 210' per NM to 900, or alternatively, with standard takeoff minimums and a normal 200' per NM climb gradient, takeoff must occur no later than 1200' prior to DER.

TOP ALTITUDE: ASSIGNED BY ATC



(NARRATIVE ON FOLLOWING PAGE)

NOTE: Chart not to scale.

SC-2, 11 JUL 2024 to 08 AUG 2024