

HI-ILS Y or LOC Y RWY 18

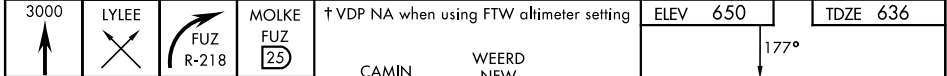
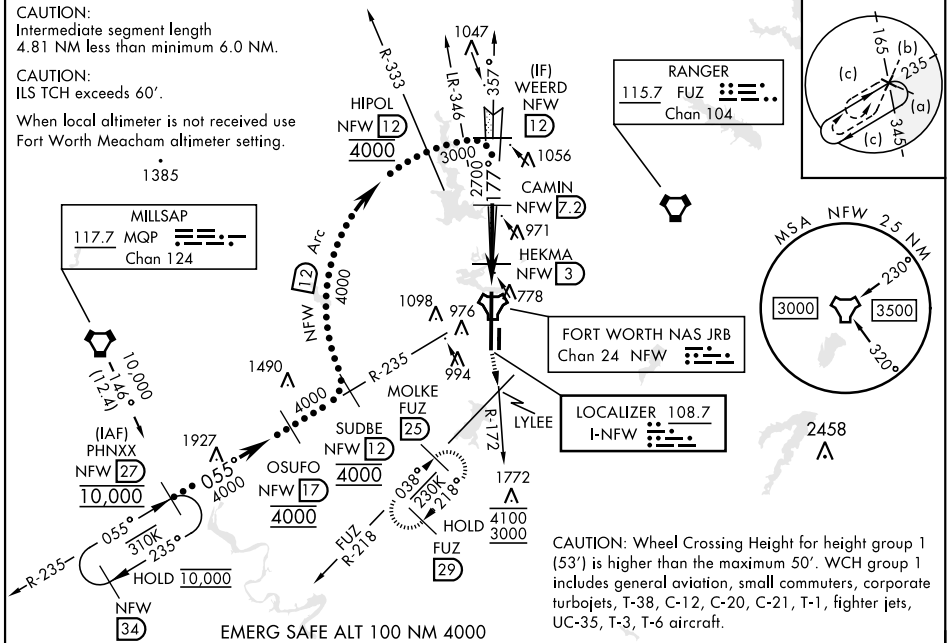
LOC I-NFW 108.7	APCH CRS 177°	Rwy Ldg 11,999 TDZE 636 Arpt Elev 650	[USN]	FORT WORTH NAS JRB (CARSWELL FLD) (KNFW)
---------------------------	-------------------------	--	-------	--

FUZ VORTAC or RADAR required.

* Circling not authorized E of Rwy 18-36.

MISSED APPROACH: Climb to 3000 direct LYLEE to intercept FUZ VORTAC R-218 to MOLKE and hold.

ATIS★ 351.675	REGIONAL APP CON 125.8 257.95	NAVY FORT WORTH TOWER★ 120.95 269.325	GND CON 121.675 279.575	CLNC DEL 126.4 254.325	ASR/ PAR
-------------------------	---	---	-----------------------------------	----------------------------------	-------------



CATEGORY	C	D	E
S-ILS 18	836-¾	200 (200-¾)	
S-LOC 18	1040-1⅞	404 (400-1⅞)	
CIRCLING*	1320-1¾ 670 (700-1¾)	1340-2¼ 690 (700-2¼)	1440-2¾ 790 (800-2¾)
FORT WORTH MEACHAM ALTIMETER			
S-ILS 18	856-¾	220 (300-¾)	
S-LOC 18	1060-1¼	424 (500-1¼)	
CIRCLING*	1340-2 690 (700-2)	1360-2¼ 710 (800-2¼)	1460-2¾ 810 (900-2¾)
FAF to MAP 5.8 NM			
Knots	120	140	160 180 200
Min:Sec	2:54	2:29	2:11 1:56 1:44

FORT WORTH, TEXAS 32°46'N-97°26'W FORT WORTH NAS JRB (CARSWELL FLD) (KNFW)

HI-ILS Y or LOC Y RWY 18



SC-2, 11 JUL 2024 to 08 AUG 2024

SC-2, 11 JUL 2024 to 08 AUG 2024