

(NANDR2.NANDR) 23110

AL-160 (FAA) FORT WORTH NAS JRB (CARSWELL FLD) (NFW)

NANDR TWO DEPARTURE (RNAV)

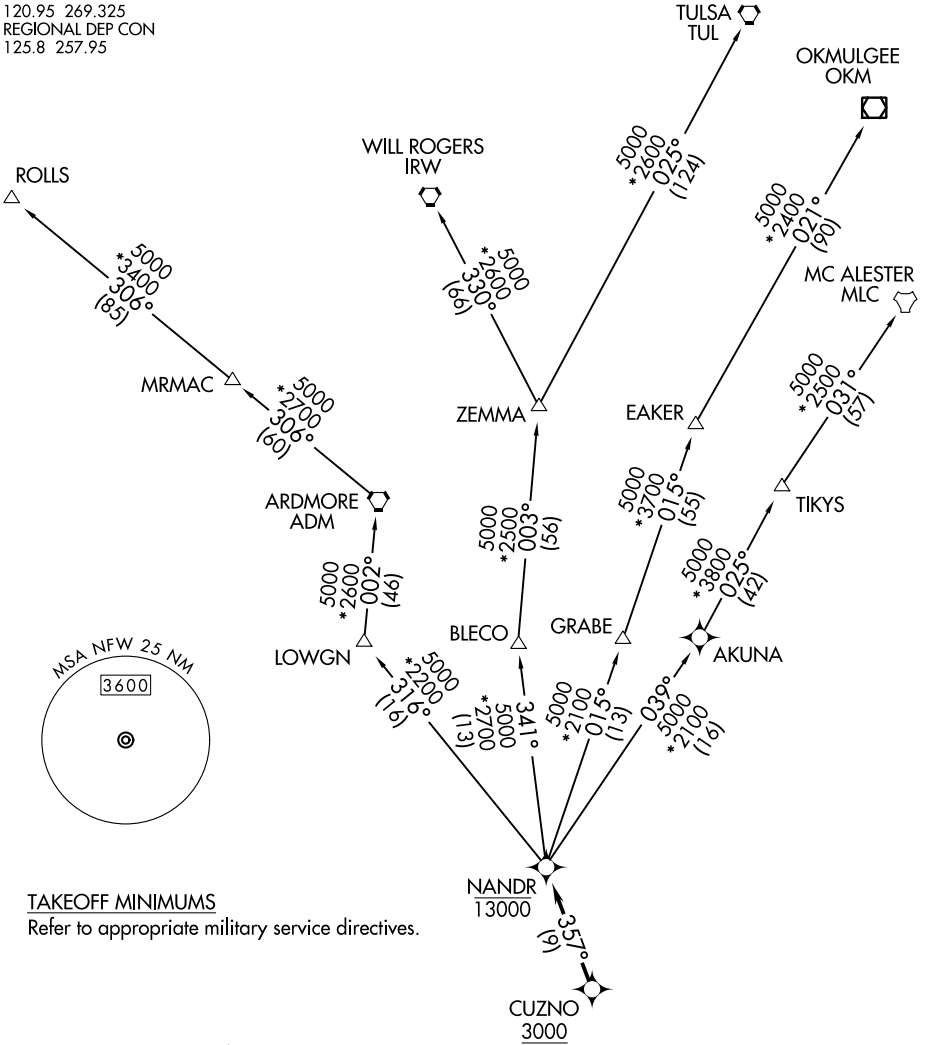
FORT WORTH, TEXAS

ATIS★
 351.675
 GND CON
 121.675 279.575
 NAVY FORT WORTH TOWER★
 120.95 269.325
 REGIONAL DEP CON
 125.8 257.95

RNAV 1 - DME/DME/IRU or GPS.

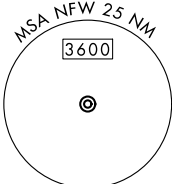
RADAR required.

**TOP ALTITUDE:
ASSIGNED BY ATC**



SC-2, 11 JUL 2024 to 08 AUG 2024

SC-2, 11 JUL 2024 to 08 AUG 2024



TAKEOFF MINIMUMS

Refer to appropriate military service directives.



NOTE: EAKER transition: For TUL terminal arrivals only.
 NOTE: TULSA transition: For all aircraft overflying TUL VORTAC.
 NOTE: Aircraft arriving to the Oklahoma City terminal area, file and expect the ZEMMA enroute transition.

NOTE: Chart not to scale.

(NARRATIVE ON FOLLOWING PAGE)

NANDR TWO DEPARTURE (RNAV)

FORT WORTH, TEXAS

(NANDR2.NANDR) 20APR23

FORT WORTH NAS JRB (CARSWELL FLD) (NFW)