

FORT WORTH, TEXAS

RNAV (GPS) RWY 36

FORT WORTH NAS JRB (CARSWELL FLD) (KNFW)

| | | |
|--|-------------------------|---|
| WAAS CH 49487 W36A | APCH CRS 357° | Rwy Idg 11,999 TDZE 650 Arprt Elev 650 |
|--|-------------------------|---|

[USN]

RNP APCH



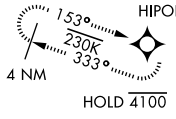
MISSED APPROACH: Climb to 1700, then climbing left turn to 3000 direct HIPOL and hold.

* When ALS inop, increase vis to 3/4 mile.

| | | | | | |
|-------------------------|---|--|-----------------------------------|----------------------------------|-------------|
| ATIS* 351.675 | REGIONAL APP CON 125.8 257.95 | NAVY FORT WORTH TOWER* 120.950 269.325 | GND CON 121.675 279.575 | CLNC DEL 126.4 254.325 | ASR/ PAR |
|-------------------------|---|--|-----------------------------------|----------------------------------|-------------|

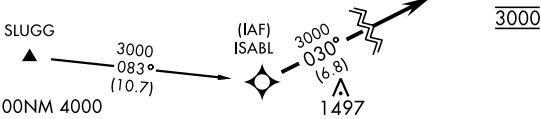
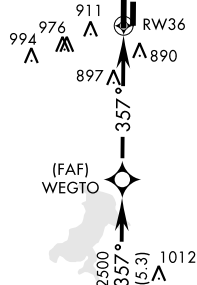
•1329

- ** When ALS inop, increase CAT AB vis to 1 mile, CAT CD vis to 1/2 miles.
- *** When ALS inop, increase vis to 1 1/2 miles, Baro VNAV NA when local altimeter not received.
- **** Circling not authorized E of Rwy 18-36.

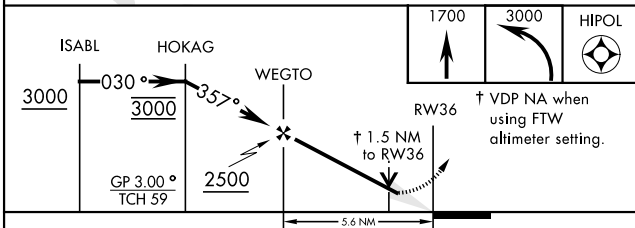
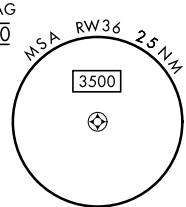


When local altimeter is not received use Fort Worth Meacham altimeter setting.

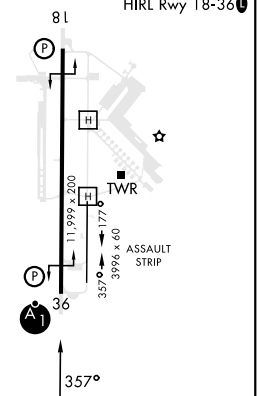
For uncompensated BaroVNAV systems, LNAV/VNAV NA below -16°C(4°F) or above 54°C(129°F).



EMERG SAFE ALT 100NM 4000



| | |
|----------|----------------|
| ELEV 650 | TDZE 650 |
| | REIL Rwy 18 |
| | HIRL Rwy 18-36 |



| CATEGORY | A | B | C | D |
|------------------------------|-----------------------|-----------------------|-------------------------------|-------------------------------|
| LPV DA * | 850-1/2 | | 200 | (200-1/2) |
| LNAV MDA ** | 1200-1/2 | 550 (600-1/2) | 1200-1 1/8 | 550 (600-1 1/8) |
| LNAV/VNAV DA *** | 1195-1 1/8 | | 545 | (600-1 1/8) |
| CIRCLING **** | 1220-1 570 (600-1) | 1320-1 670 (700-1) | 1320-1 3/4 670 (700-1 3/4) | 1340-2 1/4 690 (700-2 1/4) |
| FORT WORTH MEACHAM ALTIMETER | | | | |
| LPV DA * | 870-1/2 | | 220 | (300-1/2) |
| LNAV MDA ** | 1220-1/2 | 570 (600-1/2) | 1220-1 1/4 | 570 (600-1 1/4) |
| CIRCLING **** | 1240-1 590 (600-1) | 1340-1 690 (700-1) | 1340-2 690 (700-2) | 1360-2 1/4 710 (800-2 1/4) |

FORT WORTH, TEXAS
Amdt 2 18MAY23

32°46'N-97°26'W

FORT WORTH NAS JRB (CARSWELL FLD) (KNFW)

RNAV (GPS) RWY 36

SC-2, 11 JUL 2024 to 08 AUG 2024

SC-2, 11 JUL 2024 to 08 AUG 2024