

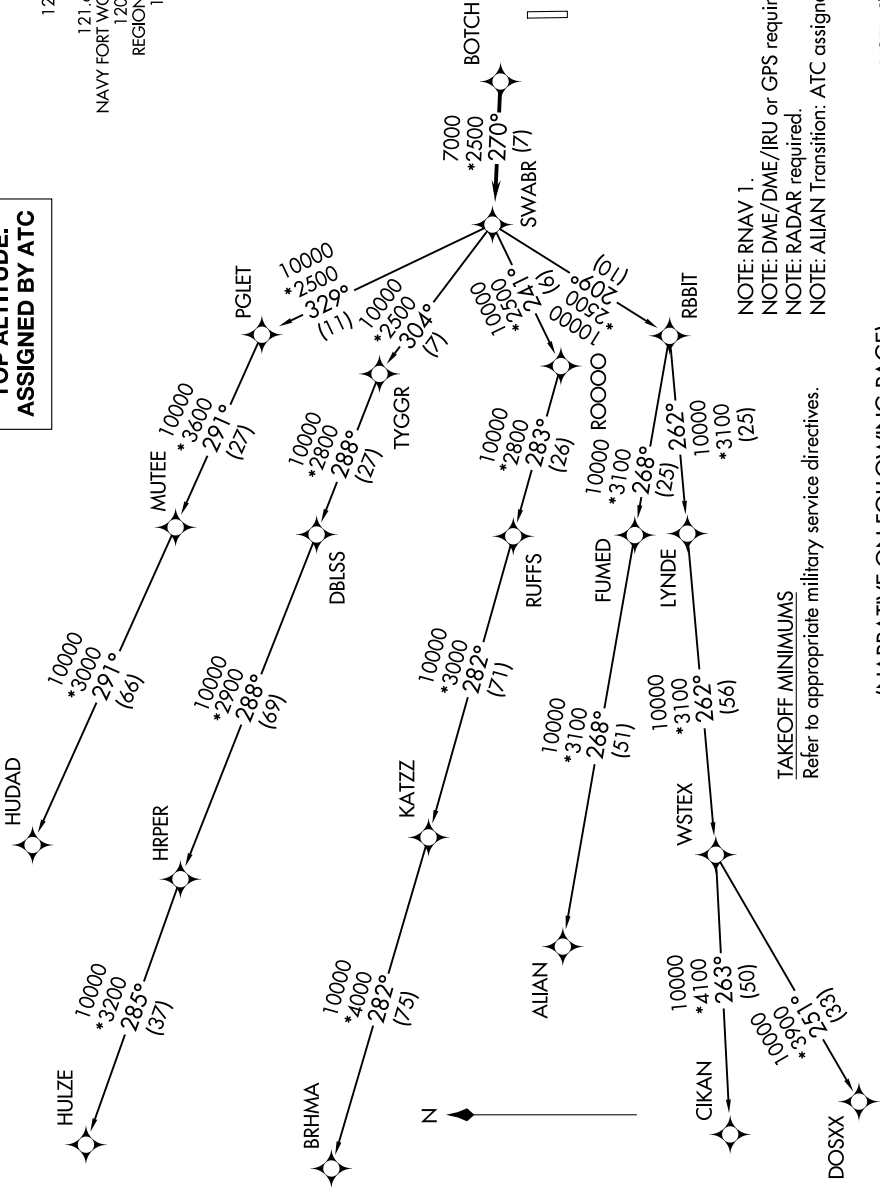
# SWABR ONE DEPARTURE (RNAV)

FORT WORTH, TEXAS

SC-2, 11 JUL 2024 to 08 AUG 2024

## TOP ALTITUDE: ASSIGNED BY ATC

- ATIS \* 351.675
- CLINC DEL 126.4 254.325
- GND CON 121.675 279.575
- NAVY FORT WORTH TOWER \* 120.95 289.325
- REGIONAL DEP CON 125.8 257.95



NOTE: RNAV 1.  
 NOTE: DME/DME/IRU or GPS required.  
 NOTE: RADAR required.  
 NOTE: ALIAN Transition: ATC assigned only.

**TAKEOFF MINIMUMS**  
 Refer to appropriate military service directives.

NOTE: Chart not to scale.

(NARRATIVE ON FOLLOWING PAGE)

SC-2, 11 JUL 2024 to 08 AUG 2024