

APP CRS	Rwy Idg	4006
002°	TDZE	17
	Apt Elev	18

RNAV (GPS) RWY 2

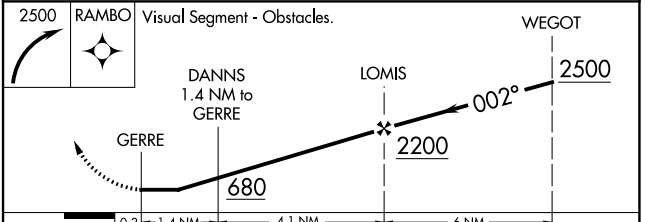
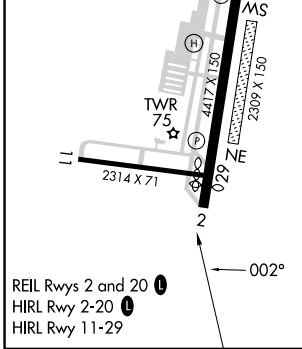
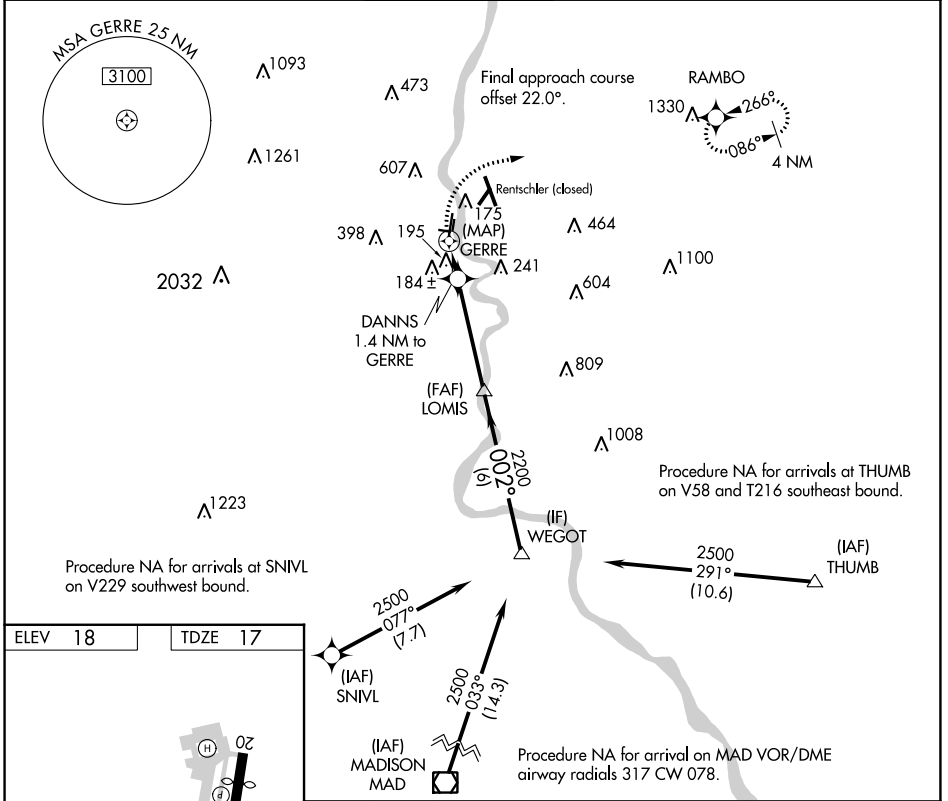
HARTFORD-BRAINARD (HF'D)

RNP APCH.

▼ Circling NA at night. Rwy 2 helicopter visibility reduction below 1 SM NA.
▲ Straight-in Rwy 2 at night, operational VGSI required, remain on or above VGSI glidepath until threshold.

MISSED APPROACH: Climbing right turn to 2500 direct RAMBO and hold.

ATIS 126.45	BRADLEY APP CON 127.8 269.325	BRAINARD TOWER * 119.6 (CTAF) 0 248.2	GND CON 121.6	CLNC DEL 121.6	UNICOM 122.95
-----------------------	---	--	-------------------------	--------------------------	-------------------------



CATEGORY	A	B	C	D
LNAV MDA	460-1	443 (500-1)	460-1 ³ / ₈	443 (500-1 ³ / ₈)
CIRCLING	580-1 562 (600-1)	900-1 ¹ / ₄ 882 (900-1 ¹ / ₄)	920-2 ³ / ₄ 902 (1000-2 ³ / ₄)	920-3 902 (1000-3)

NE-1, 11 JUL 2024 to 08 AUG 2024

NE-1, 11 JUL 2024 to 08 AUG 2024