

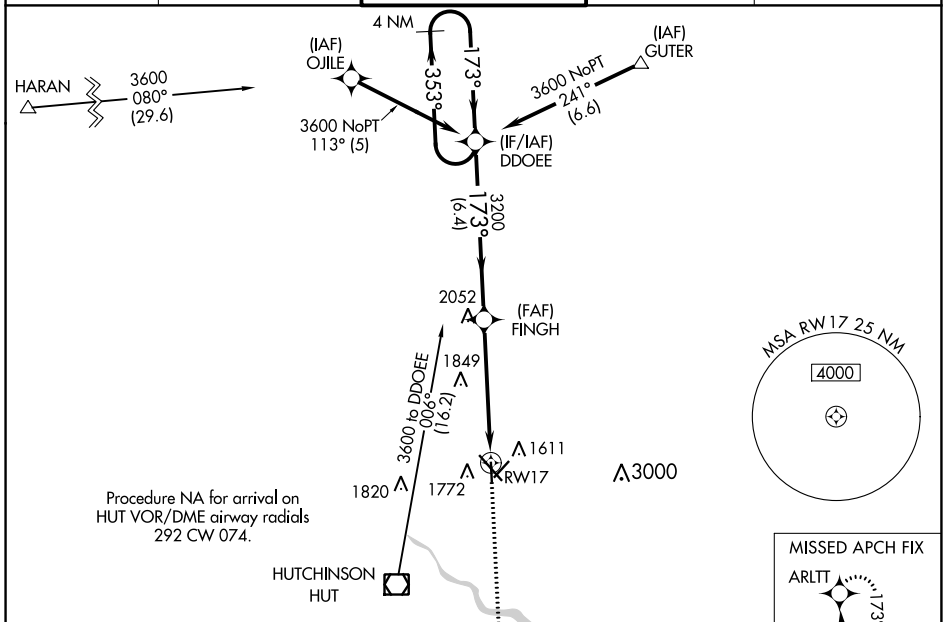
WAAS CH <b>81941</b> <b>W17A</b>	APP CRS <b>173°</b>	Rwy Idg TDZE Apt Elev	<b>4012</b> <b>1523</b> <b>1543</b>
--	------------------------	-----------------------------	---

# RNAV (GPS) RWY 17

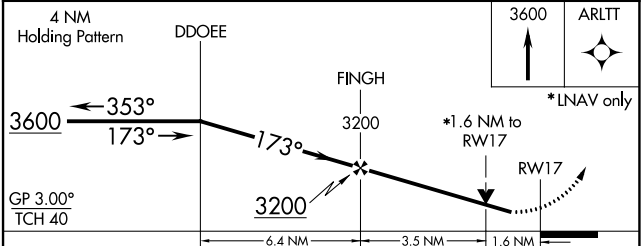
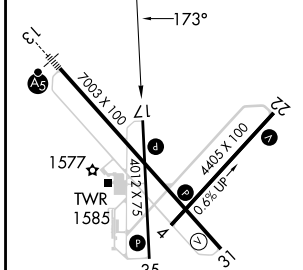
HUTCHINSON RGNL (HUT)

**⚠** Circling to Rwy 22 NA at night. For uncompensated Baro-VNAV systems, LNAV/VNAV NA below -18°C (0°F) or above 54°C (130°F). DME/DME RNP-0.3 NA. MISSED APPROACH: Climb to 3600 direct ARLTT and hold.

ATIS <b>124.25</b>	WICHITA APP CON <b>125.5 306.2</b>	HUTCHINSON TOWER * <b>118.5 (CTAF) 363.0</b>	GND CON <b>121.9</b>	UNICOM <b>122.95</b>
-----------------------	---------------------------------------	---	-------------------------	-------------------------



ELEV 1543	<b>D</b>	TDZE 1523
-----------	----------	-----------



CATEGORY	A	B	C	D
LPV DA	1889-1 366 (400-1)			NA
LNAV/VNAV DA	2078-1½ 555 (600-1½)			NA
LNAV MDA	2060-1	537 (600-1)	2060-1½ 537 (600-1½)	NA
<b>C</b> CIRCLING	2080-1	537 (600-1)	2200-1¾ 657 (700-1¾)	NA

NC-2, 11 JUL 2024 to 08 AUG 2024

NC-2, 11 JUL 2024 to 08 AUG 2024