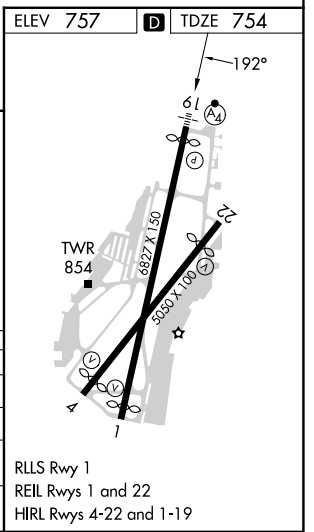
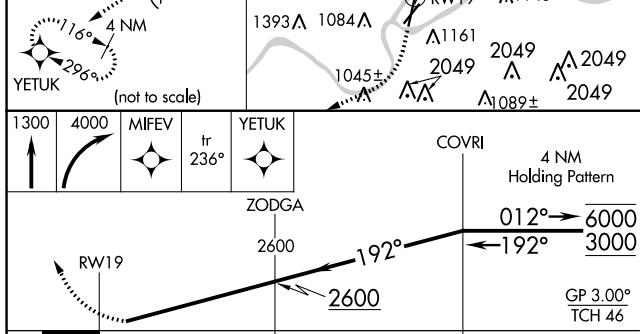
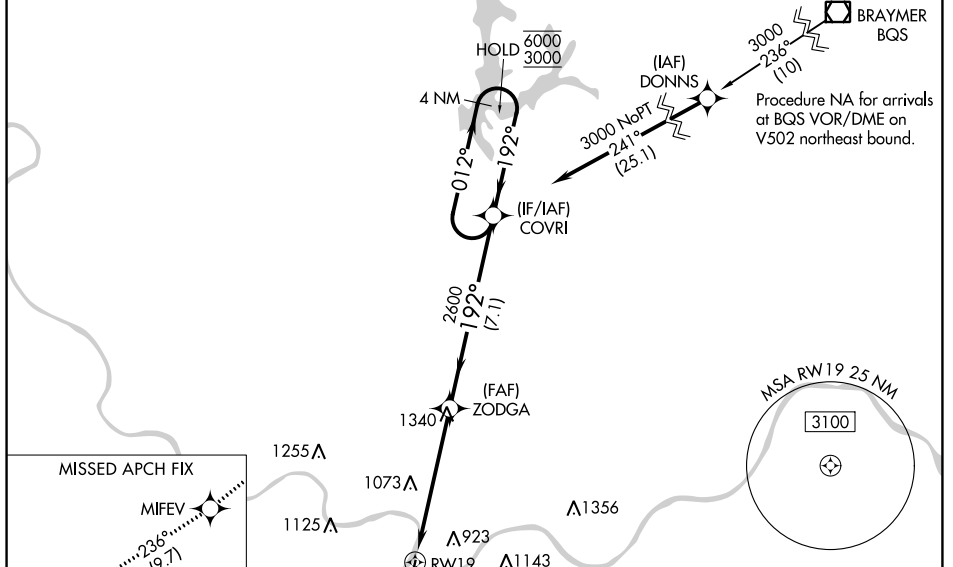


WAAS CH 90320 W19A	APP CRS 192°	Rwy Idg TDZE Apt Elev	6525 754 757
--	------------------------	-----------------------------	---

RNAV (GPS) Z RWY 19

CHARLES B WHEELER DOWNTOWN (MKC)

RNP APCH-GPS.		DOWNTOWN TOWER 133.3 233.7		CLNC DEL 121.9		GND CON 121.9	
<p>▼ Rwy 19 helicopter visibility reduction below RVR 4000 NA. Inop table does not apply to LPV* all Cats. For uncompensated Baro-VNAV systems, LNAV/VNAV NA below -19°C or above 54°C. For inop ALS, increase LPV visibility all Cats to RVR 5500.</p>		<p>MALSF</p>		<p>MISSED APPROACH: Climb to 1300 then climbing right turn to 4000 direct MIFEV and on track 236° to YETUK and hold. *Missed approach requires minimum climb of 300 feet per NM to 1500. #Missed approach requires minimum climb of 360 feet per NM to 2400.</p>			



CATEGORY	A	B	C	D
LPV DA*		1004/40	250 (300-¾)	
LPV DA		1097/40	343 (400-¾)	
LNAV/VNAV DA#		1077/40	323 (400-¾)	
LNAV/VNAV DA		1468-1¾	714 (800-1¾)	

RLS Rwy 1
REIL Rws 1 and 22
HIRL Rws 4-22 and 1-19

NC-3, 11 JUL 2024 to 08 AUG 2024

NC-3, 11 JUL 2024 to 08 AUG 2024