

ARRIVAL ROUTE DESCRIPTION

TILLIT TRANSITION (TILLIT.BAUBB2)

From BAUBB on track 087° to cross STYFF at or below 9000.

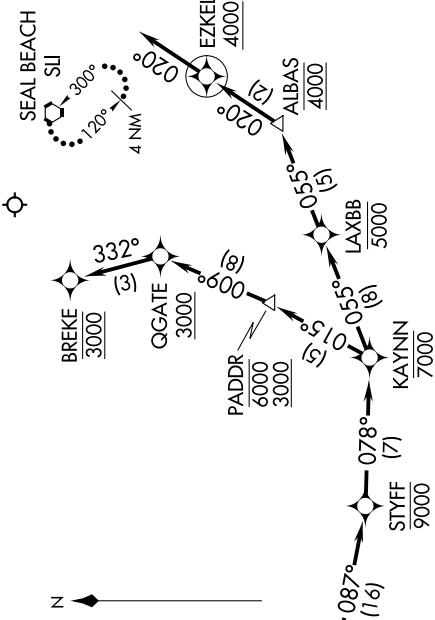
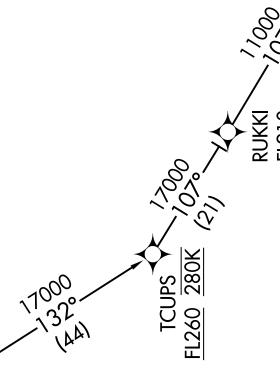
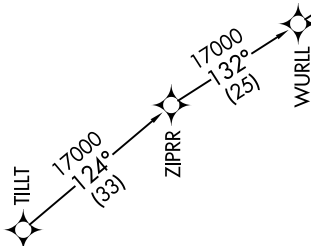
**LANDING RUNWAY 12:** From STYFF on track 078° to cross KAYNN at or below 7000, then on track 015° to cross PADDR between 3000 and 6000, then on track 009° to cross QGATE at or above 3000, then on track 332° to cross BREKE at 3000. Expect RNAV (RNP) RWY 12 approach.

**LANDING RUNWAYS 26R, 30:** From STYFF on track 078° to cross KAYNN at or below 7000, then on track 055° to cross LAXBB at or below 5000, then on track 055° to cross ALBAS at 4000, then on track 020° to cross EZKEL at or above 4000, then on track 020°. Expect RNAV (RNP) Y RWY 30 or RADAR vectors to final approach course.

LOST COMMUNICATIONS

**RUNWAYS 26R, 30:** After ALBAS proceed on the RNAV (RNP) Y RWY 30 or ILS or LOC RWY 30 approach.  
**RUNWAY 12:** After BREKE proceed on the RNAV (RNP) RWY 12 approach.  
If unable approach to LGB, after ALBAS/BREKE climb to 4000 direct SLI VORTAC and hold.

SOCAL APP CON  
127.4 263.025  
ATIS  
127.75  
LONG BEACH TOWER\*  
120.5 257.6 (Rwy 12)  
119.4 257.6 (Rwy 30)



- NOTE: RADAR required.
- NOTE: RNAV 1.
- NOTE: DME/DME/IRU or GPS required.
- NOTE: Expect Rwy 30 unless otherwise assigned by ATC.
- NOTE: Turbojet and high performance turboprop aircraft only.
- NOTE: Chart not to scale.