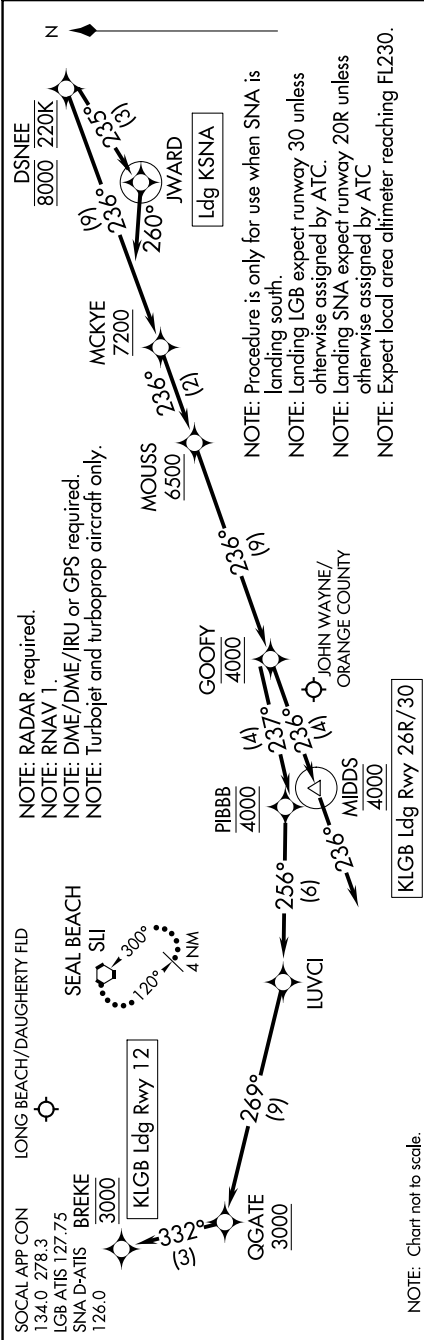


DSNEE FIVE ARRIVAL (RNAV) Arrival Routes

SW-3, 11 JUL 2024 to 08 AUG 2024



ARRIVAL ROUTE DESCRIPTION

LANDING KLG B RUNWAY 12: From DSNEE on track 236° to cross MCKYE at or above 7200, then on track 236° to cross MOUSS at or above 6500, then on track 236° to cross GOOFOY at 4000, then on track 237° to cross PIBBB at 4000, then on track 256° to LUVCI, then on track 269° to cross QGATE at or above 3000, then on track 332° to cross BREKE at 3000. Expect RNAV (RNP) RWY 12 approach.

LANDING KLG B RUNWAYS 26R, 30: From DSNEE on track 236° to cross MCKYE at or above 7200, then on track 236° to cross MOUSS at or above 6500, then on track 236° to cross GOOFOY at 4000, then on track 236° to cross MIDDS at 4000, then on track 236° Expect ILS or RNAV (RNP) RWY 30 approach, or RNAV (RNP) RWY 26R approach.

LANDING KSNA: From DSNEE on track 235° to cross JWARD, then on heading 260° or as assigned by ATC. Expect vectors to ILS or RNAV (RNP) RWY 20R final approach course.

LOST COMMUNICATIONS: In the event of lost communications:
LANDING LGB RUNWAYS 26R, 30: After MIDDS proceed on the RNAV (RNP) RWY 30 or ILS RWY 30 approach.
LANDING LGB RUNWAY 12: After BREKE proceed on the RNAV (RNP) RWY 12 approach, if unable approach, after MIDDS/BREKE climb to 4000 direct SLI VORTAC and hold.
LANDING SNA RUNWAY 20R: After DSNEE proceed on the RNAV (RNP) RWY 20R approach. If unable approach, after DSNEE maintain 6000 direct SLI VORTAC and hold.

DSNEE FIVE ARRIVAL (RNAV) Arrival Routes

SW-3, 11 JUL 2024 to 08 AUG 2024