

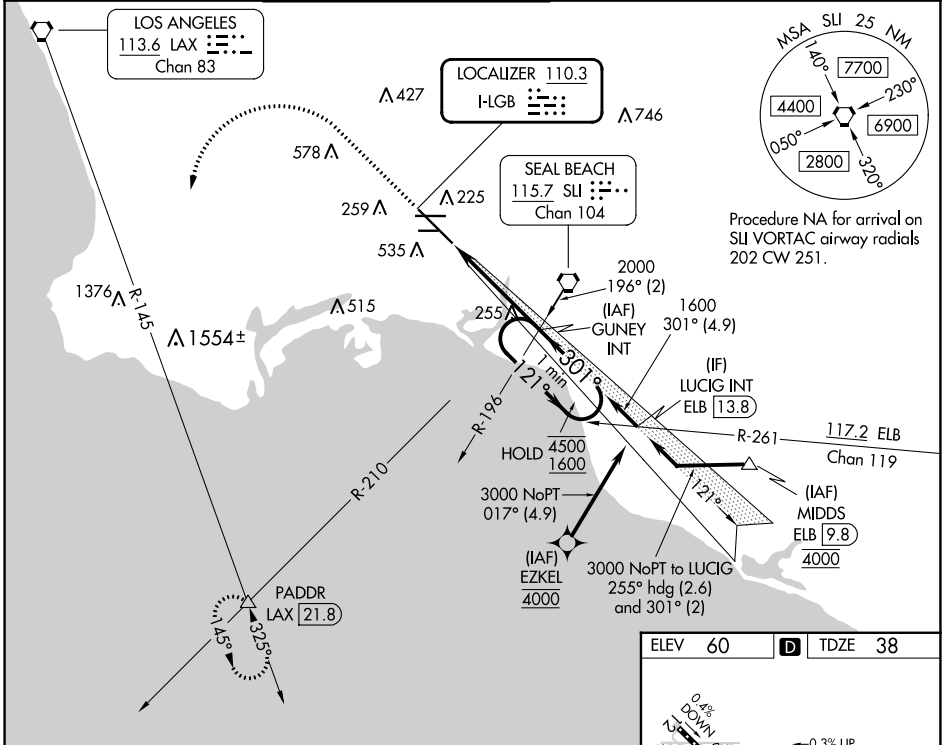
LOC I-LGB	APP CRS	Rwy Ldg	<b>7414</b>
<b>110.3</b>	<b>301°</b>	TDZE	<b>38</b>
		Apt Elev	<b>60</b>

# ILS or LOC RWY 30

LONG BEACH (DAUGHERTY FLD) (LGB)

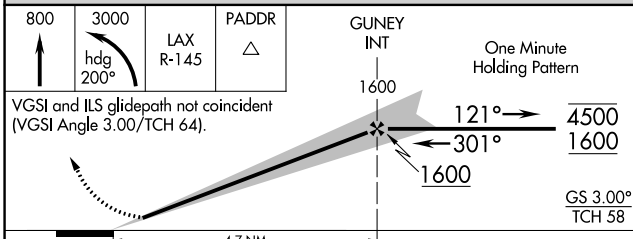
From EZKEL: RNAV 1-GPS required.	MALSR	MISSED APPROACH: Climb to 800 then climbing left turn to 3000 on heading 200° and LAX VORTAC R-145 to PADDR INT/LAX 21.8 DME and hold.
▼ For inop ALS, increase S-LOC 30 Cats C/D visibility to 1 3/8 SM.	AS	

ATIS <b>127.75</b>	SOCAL APP CON <b>125.35 316.125</b>	LONG BEACH TOWER ★ <b>120.5 257.6</b> (Rwy 12) <b>119.4</b> (CTAF) <b>0 257.6</b> (Rwy 30)	GND CON <b>133.0 257.6</b>	CLNC DEL <b>118.15</b>	UNICOM <b>122.95</b>
-----------------------	--	--	-------------------------------	---------------------------	-------------------------



SW-3, 11 JUL 2024 to 08 AUG 2024

SW-3, 11 JUL 2024 to 08 AUG 2024



ELEV 60	D	TDZE 38
TDZ/CL Rwy 30 HIRL Rwy 12-30 HIRL Rwy 8R-26L MIRL Rwy 8L-26R REIL Rws 8R, 12, 26L, and 26R FAF to MAP 4.7 NM		
Knots: 60 90 120 150 180 Min:Sec: 4:42 3:08 2:21 1:53 1:34		