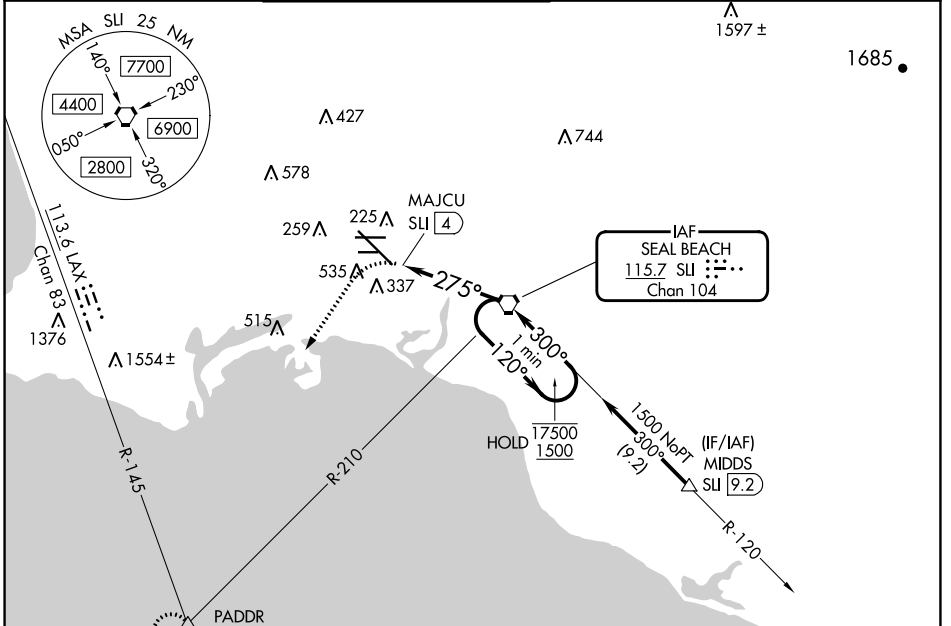


VORTAC SU 115.7 Chan 104	APP CRS 275°	Rwy ldg TDZE 38 Apt Elev 60	7414
--	------------------------	---	-------------

VOR or TACAN RWY 30

LONG BEACH (DAUGHERTY FLD) (LGB)

<p>▽ Rwy 30 helicopter visibility reduction below RVR 4000 NA. △ Inop table does not apply.</p>	<p>MALSR</p>		<p>MISSED APPROACH: Climbing left turn to 3000 on heading 200° and LAX VORTAC R-145 to PADDR INT/LAX 21.8 DME and hold.</p>	
	<p>ATIS 127.75</p>	<p>SOCAL APP CON 125.35 316.125</p>	<p>LONG BEACH TOWER* 120.5 257.6 (Rwy 12) 119.4 (CTAF) 0 257.6 (Rwy 30)</p>	<p>GND CON 133.0 257.6</p>
				<p>UNICOM 122.95</p>



SW-3, 11 JUL 2024 to 08 AUG 2024

SW-3, 11 JUL 2024 to 08 AUG 2024

ELEV 60	D TDZE 38
---------	------------------

3000 hdg 200° LAX R-145 PADDR △

VGSI and descent angles not coincident SU VORTAC (VGSI Angle 3.00/TCH 64)

One Minute Holding Pattern

MAJCU SU 4

SU 3.2

275°

120°

300°

17500

1500

≤ 2.83° TCH 55

0.8 NM 0.8 NM 3.2 NM

CATEGORY	A	B	C	D
S-30	600/55 562 (600-1)		600-1 5/8 562 (600-1 1/8)	
C CIRCLING	840-1 780 (800-1)		840-2 1/4 780 (800-2 1/4)	840-2 1/2 780 (800-2 1/2)

0.4% DOWN

18°

0.3% UP

6192 X 150

26R

0.5% UP

3918 X 100

1000 X 200

1.6%

275°

TWR 181

TDZ/CL Rwy 30

HIRL Rwy 12-30

HIRL Rwy 8R-26L

MIRL Rwy 8L-26R

REIL Rws 8R, 12, 26L, and 26R

FAF to MAP 4 NM

Knots	60	90	120	150	180
Min:Sec	4:00	2:40	2:00	1:36	1:20