

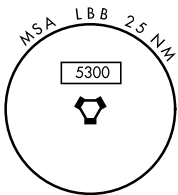
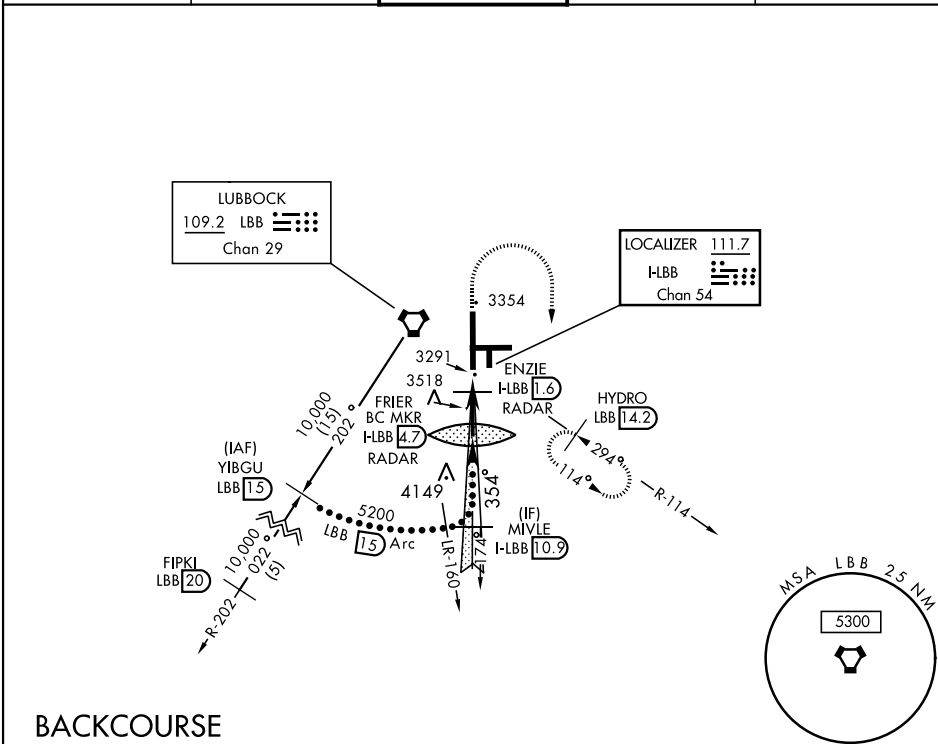
LUBBOCK, TEXAS

# HI-LOC/DME BC RWY 35L

LOC I-LBB <b>111.7</b> Chan <b>54</b>	APCH CRS <b>354°</b>	Rwy Idg <b>11,500</b> TDZE <b>3254</b> Arpt Elev <b>3282</b>	AL-241 [USAF]	LUBBOCK PRESTON SMITH INTL (KLBB)
---	-------------------------	--	---------------	-----------------------------------

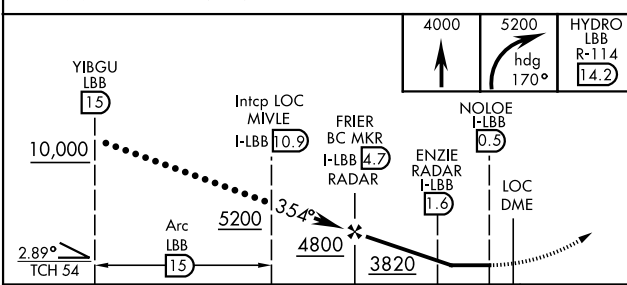
**V** Use I-LBB DME when on Localizer course.  
**A** MISSED APPROACH: Climb to 4000, then climbing right turn to 5200 on Hdg 170° and on LBB VORTAC R-114 to HYDRO INT/LBB 14.2 DME and hold.

ATIS <b>125.3 270.275</b>	APP CON <b>119.2 351.8</b>	TOWER <b>120.5 239.3</b>	GND CON <b>121.9 348.6</b>	CLNC DEL <b>125.8 281.55</b>
------------------------------	-------------------------------	-----------------------------	-------------------------------	---------------------------------



## BACKCOURSE

EMERG SAFE ALT 100 NM 7300



ELEV 3282	<b>D</b> TDZE 3254
HIRL Rwy 8-26, 17R-35L REIL Rwy 8	
354° 5 NM from FAF FAF to MAP 4.2 NM	
Knots	120 150 160 180 200
Min:Sec	2:06 1:41 1:35 1:24 1:16

CATEGORY	C	D	E
S-35L	3560-7/8	306 (300-7/8)	
<b>C</b> CIRCLING	3880-1 1/2 598 (600-1 1/2)	3940-2 658 (700-2)	4100-3 818 (900-3)

LUBBOCK, TEXAS  
Orig C 21MAY20

33°40'N-101°49'W

LUBBOCK PRESTON SMITH INTL (KLBB)

# HI-LOC/DME BC RWY 35L

SC-2, 11 JUL 2024 to 08 AUG 2024

SC-2, 11 JUL 2024 to 08 AUG 2024