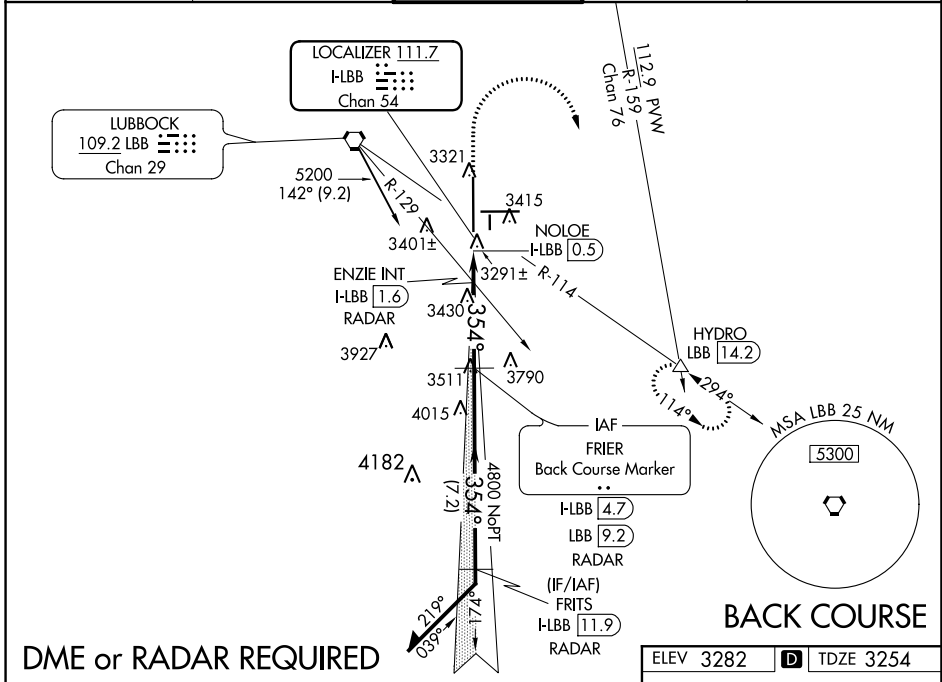


LOC I-LBB <b>111.7</b> Chan 54	APP CRS <b>354°</b>	Rwy Idg TDZE Apt Elev	<b>11500</b> <b>3254</b> <b>3282</b>
--------------------------------------	------------------------	-----------------------------	--

**LOC BC RWY 35L**  
LUBBOCK PRESTON SMITH INTL (LBB)

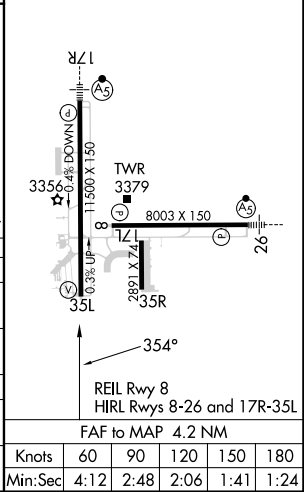
**MISSED APPROACH:** Climb to 4000 then climbing right turn to 5200 on heading 170° and on LBB VORTAC R-114 to HYDRO INT/LBB 14.2 DME and hold.

ATIS <b>125.3 270.275</b>	LUBBOCK APP CON <b>119.2 351.8</b>	LUBBOCK TOWER <b>120.5 239.3</b>	GND CON <b>121.9 348.6</b>	CLNC DEL <b>125.8 281.55</b>
------------------------------	---------------------------------------	-------------------------------------	-------------------------------	---------------------------------



**DME or RADAR REQUIRED**

4000	5200	HYDRO	FRIER BCM	Remain within 10 NM
↑	hdg 170°	LBB R-114	I-LBB 4.7 RADAR	
			ENZIE INT I-LBB 1.6 RADAR	
			NOLOE I-LBB 0.5	
			FRITS I-LBB 11.9 RADAR	
			2.89° TCH 54	
			3820	5200
			0.7	1.1
			3.1 NM	7.2 NM
CATEGORY	A	B	C	D
S-35L	3820-1	566 (600-1)	3820-1½	566 (600-1½)
CIRCLING	3820-1	538 (600-1)	3880-1½	3940-2
			598 (600-1½)	658 (600-2)
ENZIE FIX MINIMUMS				
S-35L	3560-1	306 (300-1)	3560-7/8	306 (300-7/8)
CIRCLING	3720-1	3740-1	3880-1½	3940-2
	438 (500-1)	458 (500-1)	598 (600-1½)	658 (700-2)



SC-2, 11 JUL 2024 to 08 AUG 2024

SC-2, 11 JUL 2024 to 08 AUG 2024

Knots	60	90	120	150	180
Min:Sec	4:12	2:48	2:06	1:41	1:24