

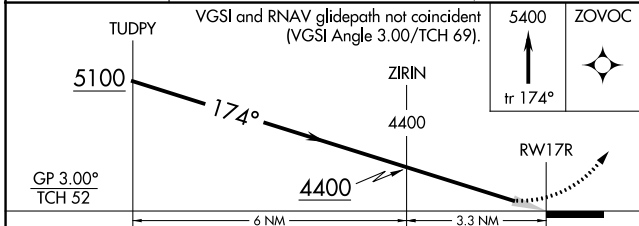
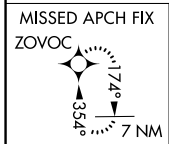
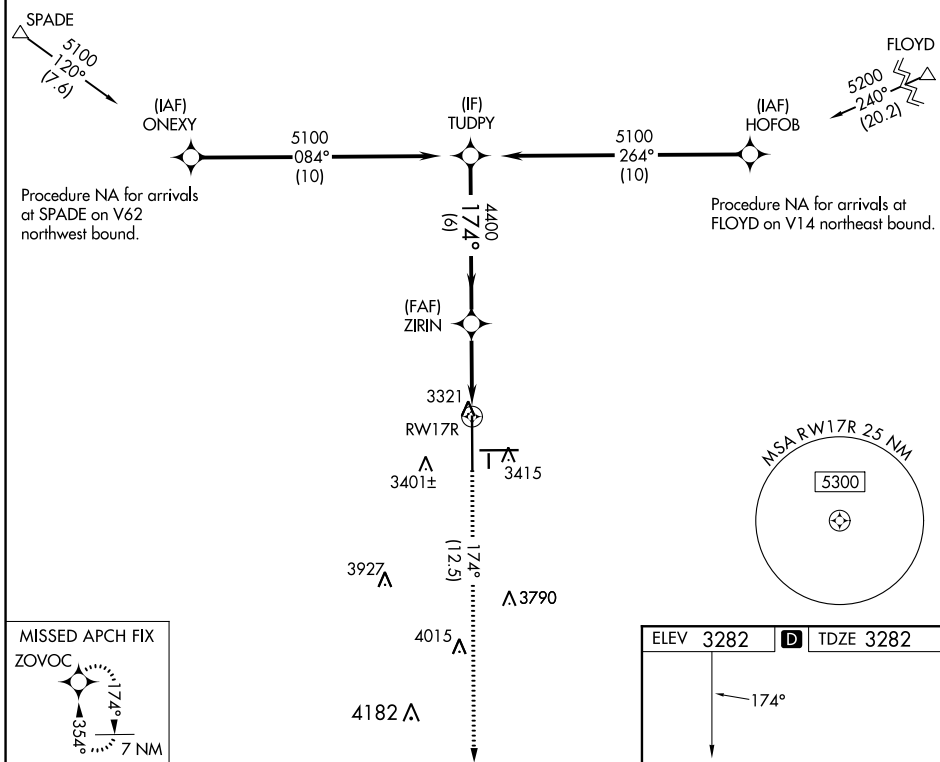
APP CRS <b>174°</b>	Rwy Idg <b>11500</b>
	TDZE <b>3282</b>
	Apt Elev <b>3282</b>

# RNAV (RNP) Z RWY 17R

LUBBOCK PRESTON SMITH INTL (LBB)

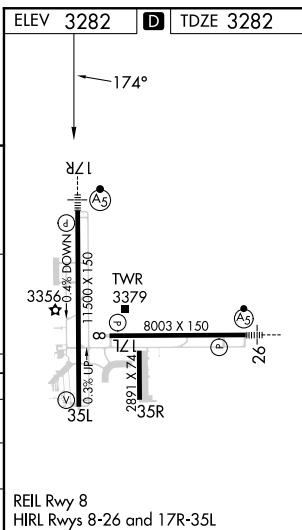
RNP AR APCH. ▼ For uncompensated Baro-VNAV systems, procedure NA below -12°C or above 51°C. For inop ALS, increase RNP 0.16 all Cnts visibility to RVR 4500 and increase RNP 0.30 all Cnts visibility to RVR 6000.	MALSR 	MISSED APPROACH: Climb to 5400 on track 174° to ZOVOC and hold.
---	-----------	---

ATIS <b>125.3 270.275</b>	LUBBOCK APP CON <b>119.2 351.8</b>	LUBBOCK TOWER <b>120.5 239.3</b>	GND CON <b>121.9 348.6</b>	CLNC DEL <b>125.8 281.55</b>
------------------------------	---------------------------------------	-------------------------------------	-------------------------------	---------------------------------



CATEGORY	A	B	C	D
RNP 0.16 DA		3549/24	267 (300-1/2)	
RNP 0.30 DA		3639/40	357 (400-3/4)	

**AUTHORIZATION REQUIRED**



SC-2, 11 JUL 2024 to 08 AUG 2024

SC-2, 11 JUL 2024 to 08 AUG 2024