

LOC I-MJE 109.95	APP CRS 057°	Rwy ldg 7208 TDZE 224 Apt Elev 266
----------------------------	------------------------	---

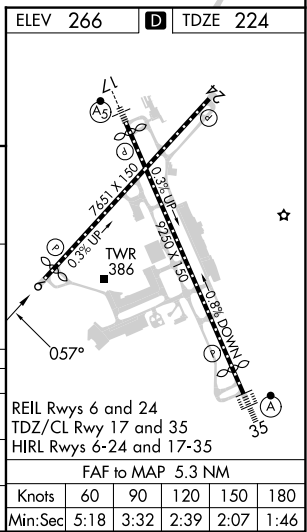
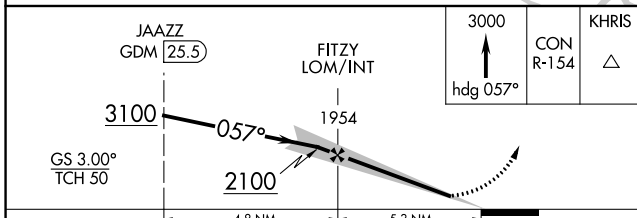
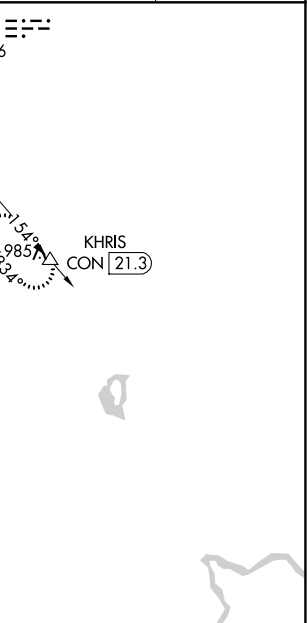
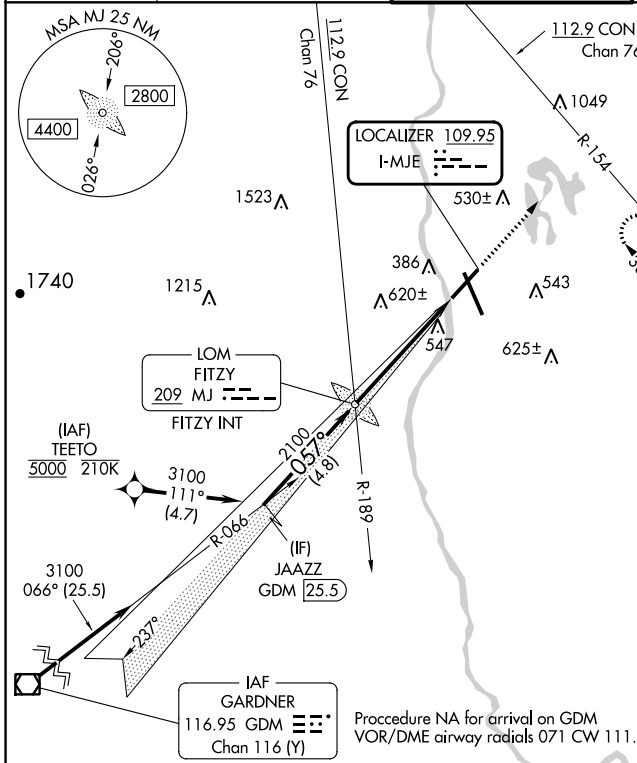
ILS or LOC RWY 6

MANCHESTER BOSTON RGNL (MHT)

RNP APCH - GPS. From TEETO.
DME required.

MISSED APPROACH: Climb to 3000 on heading 057° and CON VOR/DME R-154 to KHRIS/CON 21.3 DME and hold, continue climb-in-hold to 3000.

ATIS 119.55	BOSTON APP CON 124.9 269.075	MANCHESTER TOWER 121.3 239.025	GND CON 121.9	CLNC DEL 135.9
-----------------------	--	--	-------------------------	--------------------------



CATEGORY	A	B	C	D
S-ILS 6	474/40		250 (300-¾)	
S-LOC 6	920/55	696 (700-1)	920-2	696 (700-2)
CIRCLING	920-1	654 (700-1)	980-2 714 (800-2)	1100-2¾ 834 (900-2¾)

REIL Rwy 6 and 24
TDZ/CL Rwy 17 and 35
HIRL Rwy 6-24 and 17-35
FAF to MAP 5.3 NM

Knots	60	90	120	150	180
Min:Sec	5:18	3:32	2:39	2:07	1:46

NE-1, 11 JUL 2024 to 08 AUG 2024

NE-1, 11 JUL 2024 to 08 AUG 2024