

WAAS CH <b>58214</b> <b>W06A</b>	APP CRS <b>057°</b>	Rwy Idg TDZE Apt Elev	<b>7208</b> <b>224</b> <b>266</b>
--	------------------------	-----------------------------	---

# RNAV (GPS) RWY 6

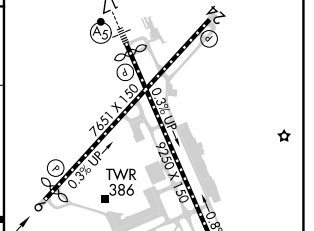
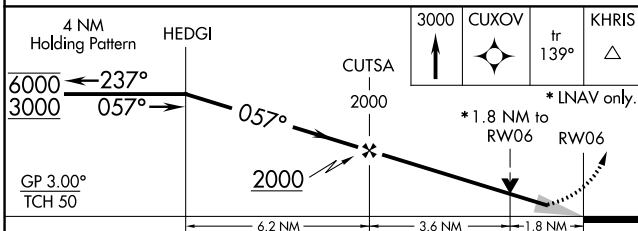
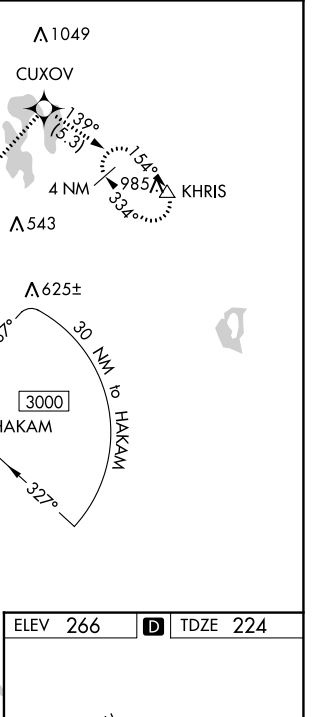
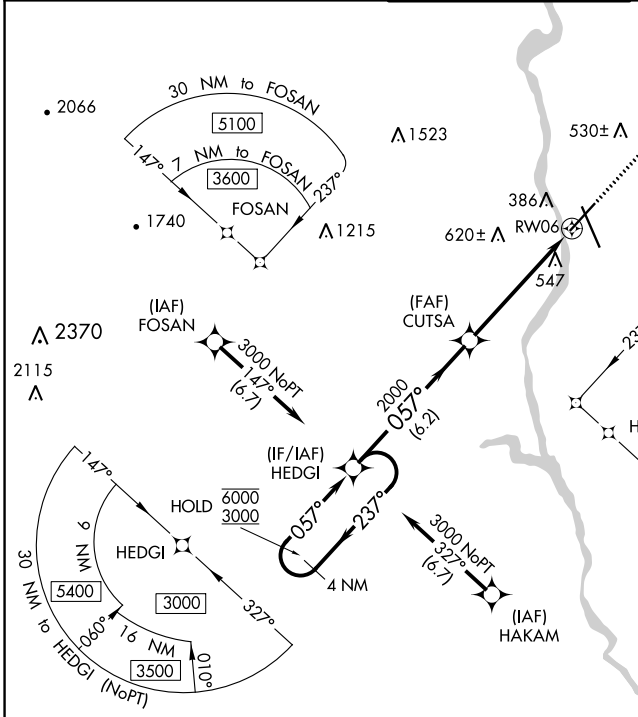
MANCHESTER BOSTON RGNL (MHT)

RNP APCH - GPS.

**⚠** For uncompensated Baro-VNAV systems, LNAV/VNAV NA below -19°C or above 54°C.

MISSED APPROACH: Climb to 3000 direct CUXOV and on track 139° to KHRIS and hold, continue climb-in-hold to 3000.

ATIS <b>119.55</b>	BOSTON APP CON <b>124.9 269.075</b>	MANCHESTER TOWER <b>121.3 239.025</b>	GND CON <b>121.9</b>	CLNC DEL <b>135.9</b>
-----------------------	--	--	-------------------------	--------------------------



CATEGORY	A	B	C	D
LPV DA	474/40		250 (300-¾)	
LNAV/VNAV DA	840-1¾		616 (600-1¾)	
LNAV MDA	840/55 616 (600-1)		840-1¾ 616 (600-1¾)	
<b>C</b> CIRCLING	880-1 614 (700-1)		980-2 714 (800-2) 1100-2¾ 834 (900-2¾)	

ELEV 266	<b>D</b> TDZE 224
----------	-------------------

REIL Rwy 6 and 24  
TDZ/CL Rwy 17 and 35  
HIRL Rwy 6-24 and 17-35

NE-1, 11 JUL 2024 to 08 AUG 2024

NE-1, 11 JUL 2024 to 08 AUG 2024