

APP CRS	Rwy Idg	7650
352°	TDZE	265
	Api Elev	266

RNAV (RNP) Z RWY 35

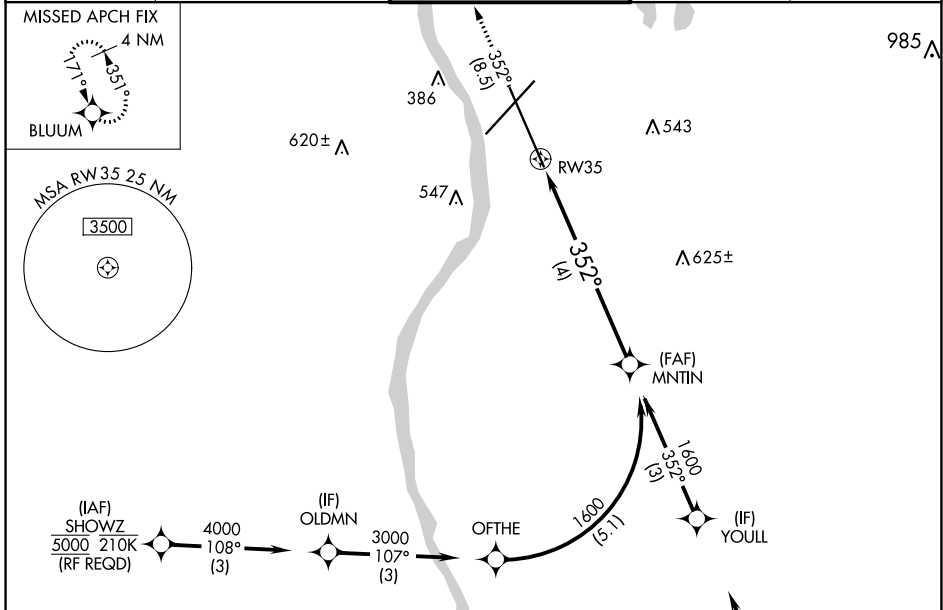
MANCHESTER BOSTON RGNL (MHT)

▼ For uncompensated Baro-VNAV systems, procedure NA below -18°C (0°F) or above 54°C (130°F). GPS required. When local altimeter not received, procedure NA. For inop ALSF-2, increase RNP 0.20 all Cats visibility to 1½ SM and RNP 0.30 all Cats visibility to 1¾ SM.

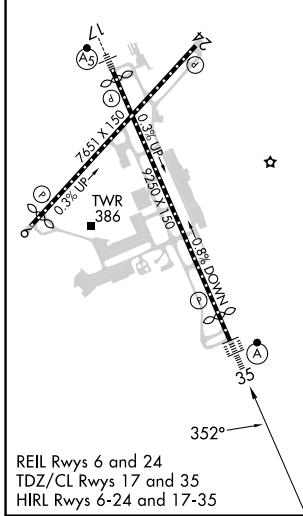
ALFS-2

MISSED APPROACH: Climb to 3000 on track 352° to BLUUM and hold, continue climb-in-hold to 3000.

ATIS	BOSTON APP CON	MANCHESTER TOWER	GND CON	CLNC DEL
119.55	124.9 269.075	121.3 239.025	121.9	135.9



ELEV 266	D	TDZE 265
----------	----------	----------



3000 tr 352°

BLUUM

VGSI and RNAV glidepath not coincident (VGSI Angle 3.00/TCH 68).

MNTIN 1600

RW35

352°

1600

GP 3.00° TCH 55

See planview for multiple IF locations.

4 NM

CATEGORY	A	B	C	D
RNP 0.20 DA		755/60	490 (500-1½)	
RNP 0.30 DA		802-1¾	537 (600-1¾)	

AUTHORIZATION REQUIRED

NE-1, 11 JUL 2024 to 08 AUG 2024

NE-1, 11 JUL 2024 to 08 AUG 2024