

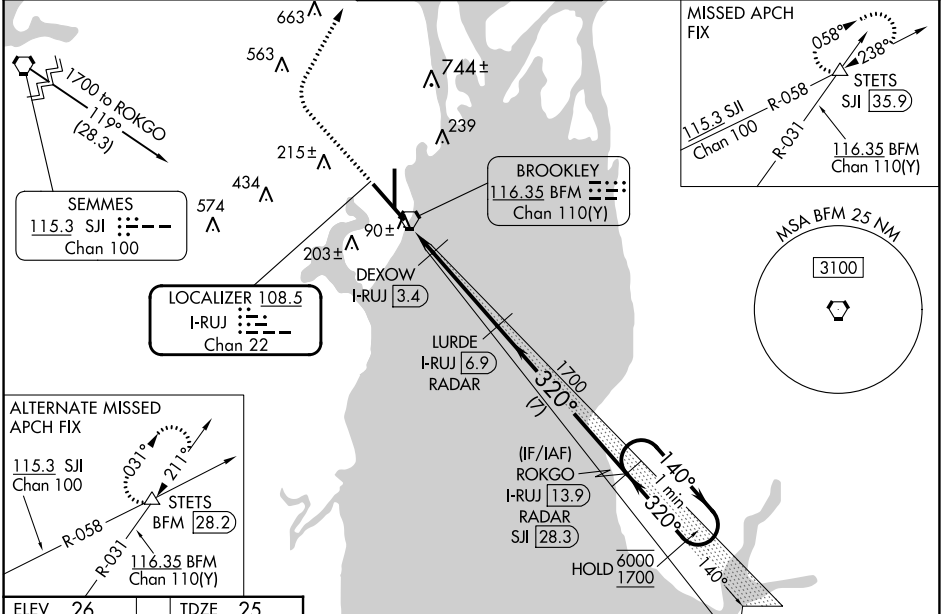
| | | |
|--|------------------------|---|
| LOC/DME I-RUJ 108.5 Chan 22 | APP CRS 320° | Rwy Idg 9618 TDZE 25 Apt Elev 26 |
|--|------------------------|---|

ILS or LOC RWY 32

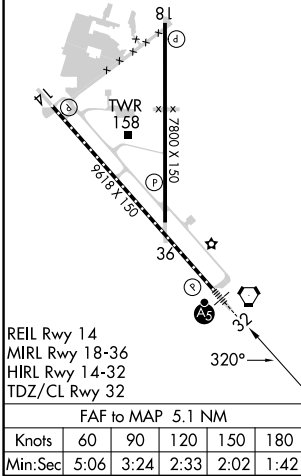
MOBILE INTL (BFM)

| | | |
|--|-------|---|
| DME or RADAR required. | MALSR | MISSED APPROACH: Climb to 800 then climbing right turn to 2000 on heading 030° and on SJJ R-058 to STETS INT/SJJ 35.9 DME and hold. |
| <p>For inop ALS, increase S-LOC 32 Cat C/D visibility to 1¾ and DEXOW S-LOC 32 Cat C/D visibility to RVR 4500.</p> | | |

| | | | | |
|------------------------|--|--|-------------------------------|-------------------------|
| ATIS 135.575 | MOBILE APP CON ★ 118.5 269.3 | INTERNATIONAL TOWER ★ 118.8 (CTAF) 251.1 | GND CON 121.7 239.3 | UNICOM 122.95 |
|------------------------|--|--|-------------------------------|-------------------------|



| | |
|---------|---------|
| ELEV 26 | TDZE 25 |
|---------|---------|



| | | | | |
|--------------------|--------|-----------------|------------------------|---|
| 800 | 2000 | SJJ R-058 | STETS | VGSI and ILS glidepath not coincident (VGSI Angle 3.00/TCH 71). |
| | | | | One Minute Holding Pattern |
| | | DEXOW I-RUJ 3.4 | LURDE I-RUJ 6.9 RADAR | ROKGO I-RUJ 13.9 RADAR |
| | | | | |
| 0.9 NM | 0.8 NM | 3.5 NM | 7 NM | GS 3.00° TCH 55 |
| CATEGORY | A | B | C | D |
| S-ILS 32 | | 225/18 | 200 (200-½) | |
| S-LOC 32 | 580/24 | 555 (600-½) | 580/60 | 555 (600-1¼) |
| CIRCLING | 680-1 | 654 (700-1) | 680-1¾ 654 (700-1¾) | 1100-3 1074 (1100-3) |
| DEXOW FIX MINIMUMS | | | | |
| S-LOC 32 | | 340/24 | 315 (400-½) | |
| CIRCLING | 680-1 | 654 (700-1) | 680-1¾ 654 (700-1¾) | 1100-3 1074 (1100-3) |

SE-4, 11 JUL 2024 to 08 AUG 2024

SE-4, 11 JUL 2024 to 08 AUG 2024