

WAAS CH <b>50411</b> <b>W14A</b>	APP CRS <b>140°</b>	Rwy Idg <b>9618</b> TDZE <b>26</b> Apt Elev <b>26</b>
----------------------------------------	------------------------	-------------------------------------------------------------

# RNAV (GPS) RWY 14

MOBILE INTL (BFM)

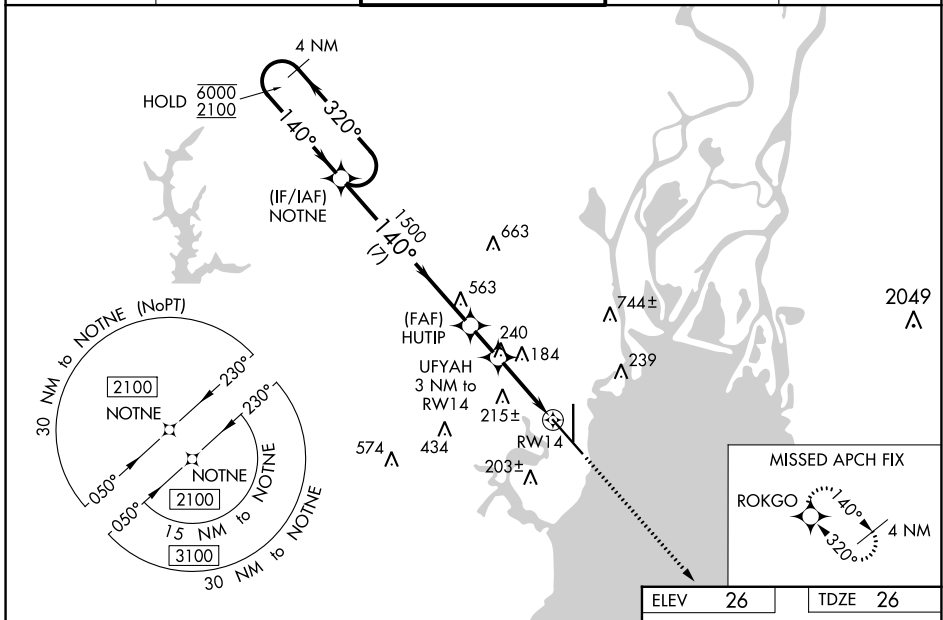
RNP APCH - GPS.



Rwy 14 helicopter visibility reduction below 3/4 SM NA. For uncompensated Baro-VNAV systems, LNAV/VNAV NA below -2°C or above 54°C.

MISSED APPROACH:  
Climb to 1700 direct  
ROKGO and hold.

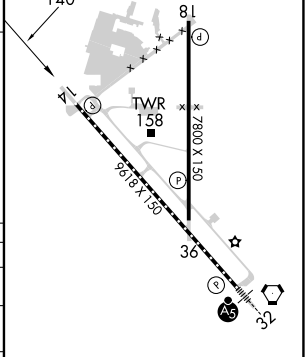
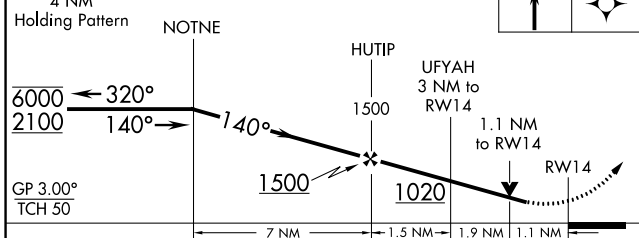
ATIS <b>135.575</b>	MOBILE APP CON * <b>118.5 269.3</b>	INTERNATIONAL TOWER* <b>118.8 (CTAF) 0 251.1</b>	GND CON <b>121.7 239.3</b>	UNICOM <b>122.95</b>
------------------------	----------------------------------------	-----------------------------------------------------	-------------------------------	-------------------------



SE-4, 11 JUL 2024 to 08 AUG 2024

SE-4, 11 JUL 2024 to 08 AUG 2024

ELEV 26	TDZE 26
---------	---------



CATEGORY	A	B	C	D
LPV DA		308-7/8	282 (300-7/8)	
LNAV/VNAV DA		396-1	370 (400-1)	
LNAV MDA	440-1	414 (500-1)	440-1 1/8	414 (500-1 1/8)
CIRCLING	680-1	654 (700-1)	680-1 3/4	1100-3
			654 (700-1 3/4)	1074 (1100-3)

REIL Rwy 14  
MIRL Rwy 18-36  
HIRL Rwy 14-32  
TDZ/CL Rwy 32