

VOR/DME IGN <b>117.6</b> Chan <b>123</b>	APP CRS <b>242°</b>	Rwy Idg TDZE <b>157</b> Apt Elev <b>164</b>	<b>4886</b>
--	------------------------	---	-------------

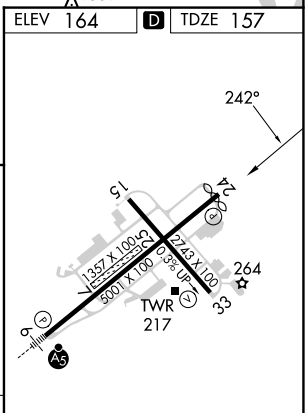
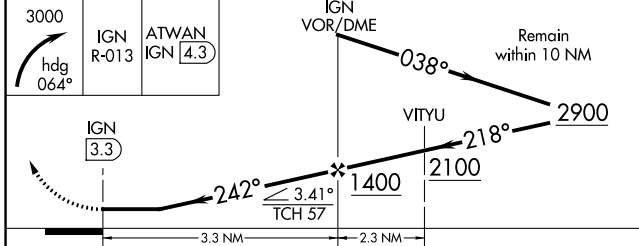
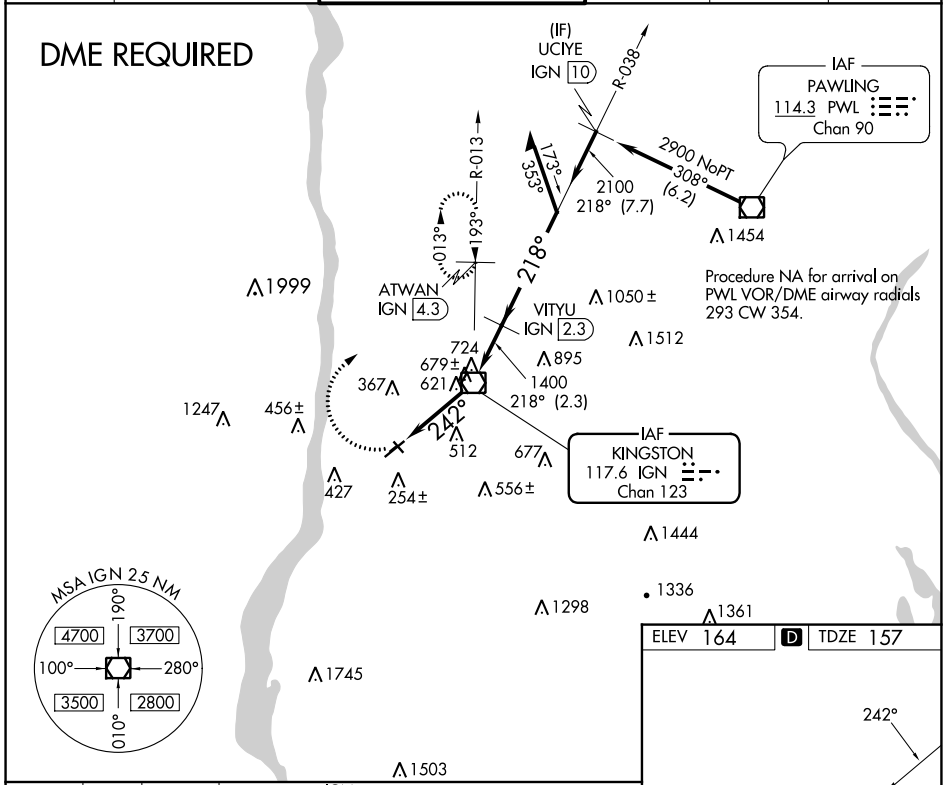
# VOR RWY 24

HUDSON VALLEY RGNL (POU)

**⚠** Circling NA to Rwy 7 and 25. Circling Rwy 15, 33 NA at night. Rwy 24 helicopter visibility reduction below 3/4 SM NA. Rwy 15, 33 helicopter visibility reduction below 1 NA. DME required. When local altimeter not received, use Montgomery altimeter setting and increase all MDAs 80 feet and Circling visibility Cat A 1/4 SM.

**MISSED APPROACH:** Climbing right turn to 3000 on heading 064° and IGN VOR/DME R-013 to ATWAN/4.3 DME and hold, continue climb-in-hold to 3000.

ATIS <b>126.75</b>	NEW YORK APP CON <b>132.75 363.1</b>	DUTCHESS COUNTY TOWER* <b>124.0</b> (CTAF) <b>0 269.15</b>	GND CON <b>121.8</b>	CLNC DEL <b>121.8</b>	UNICOM <b>122.95</b>
-----------------------	---	---	-------------------------	--------------------------	-------------------------



CATEGORY	A	B	C	D
S-24	940-1 783 (800-1)	940-1 1/4 783 (800-1 1/4)	940-2 1/2 783 (800-2 1/2)	783 (800-2 1/2)
CIRCLING	940-1 776 (800-1)	940-1 1/4 776 (800-1 1/4)	940-2 1/2 776 (800-2 1/2)	1080-3 916 (1000-3)

MRL Rwy 15-33  
HRL Rwy 6-24 **Ⓛ**  
REIL Rwy 24 **Ⓛ**  
REIL Rwy 33

NE-2, 11 JUL 2024 to 08 AUG 2024

NE-2, 11 JUL 2024 to 08 AUG 2024