

HI-TACAN Y RWY 28

TACAN NGU Chan 86Y	APCH CRS 290°	Rwy ldg TDZE Arprt Elev	7375 14 15
------------------------------	-------------------------	-------------------------------	---------------------------------------

[USN]

NORFOLK NS (CHAMBERS FLD) (KNGU)

RADAR required	SSALF	MISSED APPROACH: Climb to 2300 on NGU TACAN R-277 then as directed by ATC.
<p>▼ * When ALS inop, increase CAT CDE vis to 1 3/8 miles.</p> <p>** Circling not authorized S of Rwy 10-28.</p>		

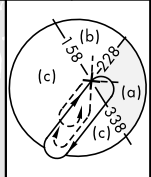
ATIS 118.425 338.225	APP CON 118.9 273.475	CHAMBERS TOWER 124.3 379.15	GND CON 121.8 370.85	ASR/PAR
--------------------------------	---------------------------------	---------------------------------------	--------------------------------	---------

CAUTION:
Do not mistake Norfolk Intl 5 NM SE for Chambers Fld. Chambers Fld has a single rwy, Norfolk Intl has int runways.

NORFOLK NS HELIPORT 1 NM NW
Use caution in circling approach.

FAC 464 ft from rwy CL at 3000 ft from thld.

A 758

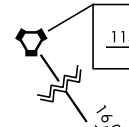


CHAMBERS
Chan 86Y NGU

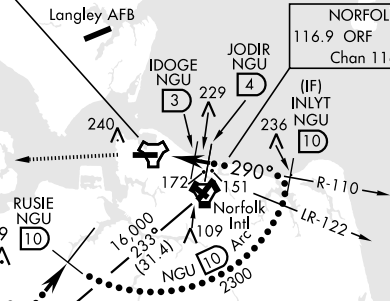
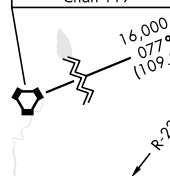
NORFOLK
116.9 ORF
Chan 116

ORF Feeder requires procedure turn.

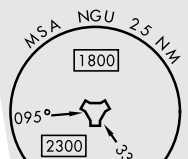
RICHMOND
114.1 RIC
Chan 88



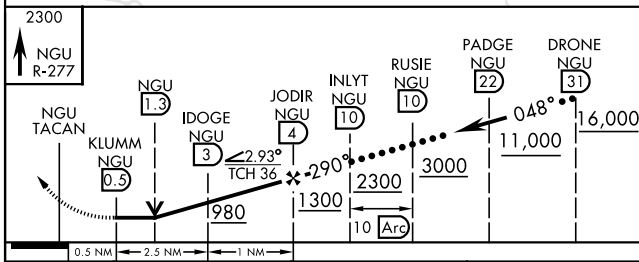
RALEIGH DURHAM
117.2 RDU
Chan 119



CAUTION: Arc segment enters KNTU class D airspace.



EMERG SAFE ALT 100 NM 4100



CATEGORY	C	D	E
S-28 *	460-1	446	(500-1)
CIRCLING **	540-1 1/2 525 (600-1 1/2)	580-2	565 (600-2)

ELEV	15	TDZE	14
------	----	------	----

Rwy 10 ldg 8071'
Rwy 28 ldg 7375'

NORFOLK NS Heliport

HIRL Rwy 10-28
REIL Rwy 10-28
TDZL/CL Rwy 10-28

HI-TACAN Y RWY 28

NE-3, 11 JUL 2024 to 08 AUG 2024

NE-3, 11 JUL 2024 to 08 AUG 2024