

(HILRS.TIMMO1) 22307

# TIMMO ONE ARRIVAL (RNAV)

AL-304 (FAA)

OMAHA, NEBRASKA

OMAHA APP CON  
 124.5 263.0 EAST  
 120.1 354.05 WEST  
 KOFF ATIS  
 126.025 273.5  
 OMA D-ATIS  
 120.4

RNAV 1-DME/DME/IRU or GPS.

RADAR required.

CRPET  
 5000 210K

Ldg KOMA Rwy's  
 14L/R, 18

EPPLEY AIRFIELD

## ARRIVAL ROUTE DESCRIPTION

### HTHWY TRANSITION (HTHWY.TIMMO1)

#### LANDING KOMA

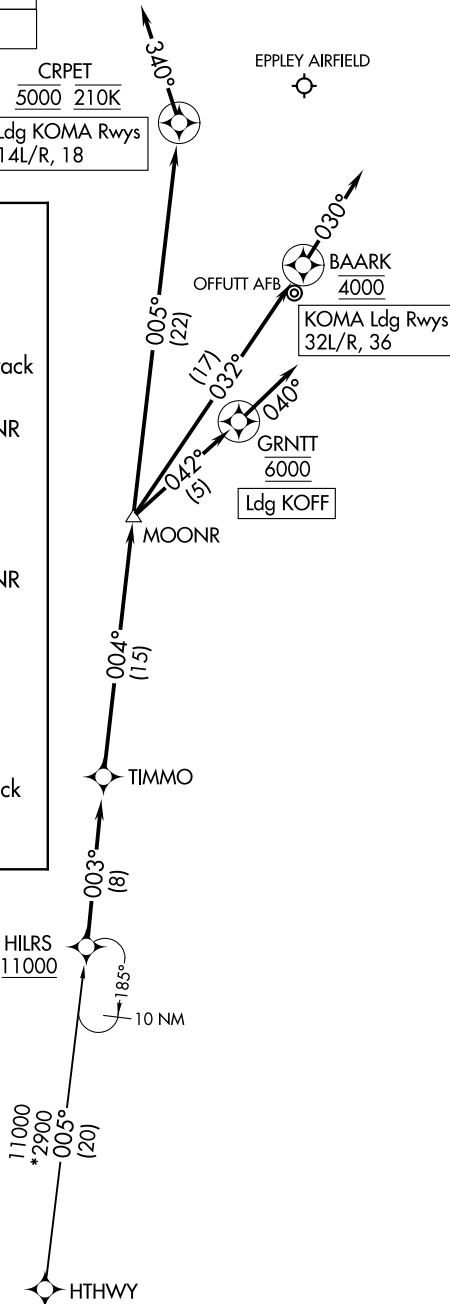
From HILRS on track 003° to TIMMO, then on track 004° to MOONR.

LANDING RUNWAYS 14L/R, 18: From MOONR on track 005° to cross CRPET at 5000, and at 210K, then on heading 340° or as assigned by ATC. Expect RADAR vectors to final approach course.

LANDING RUNWAYS 32L/R, 36: From MOONR on track 032° to cross BAARK at 4000, then on track 030°. Expect RADAR vectors to final approach course.

#### LANDING KOFF

From HILRS on track 004° to MOONR, then on track 042° to cross GRNTT at 6000, then on track 040°. Expect RADAR vectors to final approach course.



NOTE: For non-GPS equipped aircraft, LNK DME must be operational.

NOTE: Chart not to scale.

NC-2, 11 JUL 2024 to 08 AUG 2024

NC-2, 11 JUL 2024 to 08 AUG 2024

# TIMMO ONE ARRIVAL (RNAV)

OMAHA, NEBRASKA

(HILRS.TIMMO1) 27JAN22