

VOR/DME PVD 115.6 Chan 103	APP CRS 326°	Rwy Idg TDZE Apt Elev 6081 50 54
--	------------------------	--

VOR Y RWY 34

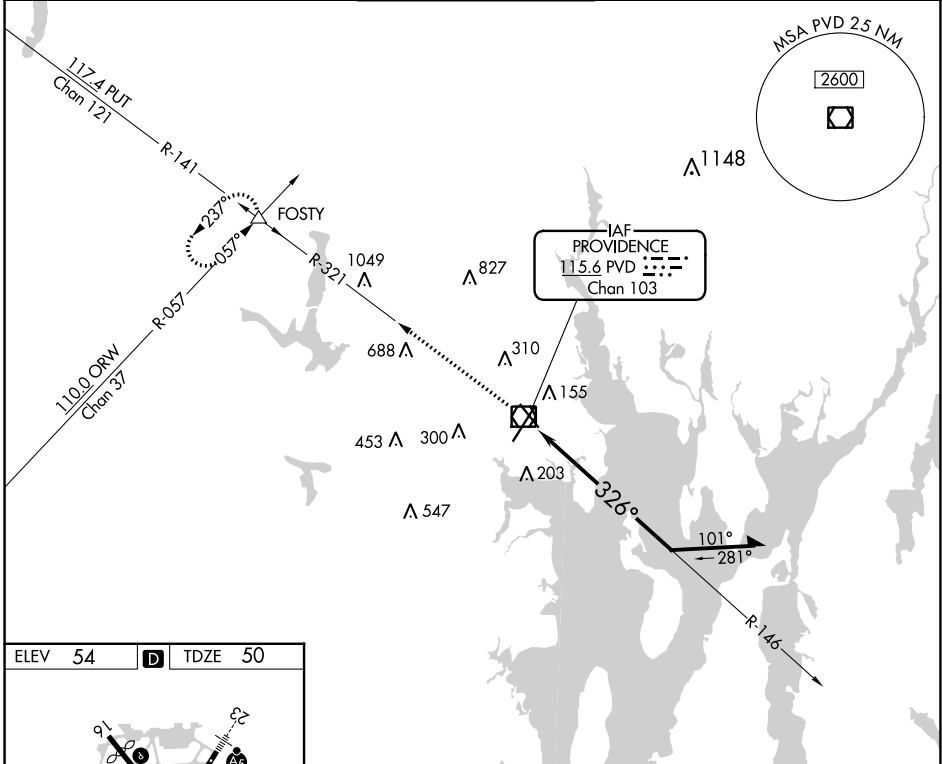
RHODE ISLAND TF GREEN INTL (PVD)

▼ Rwy 34 helicopter visibility reduction below RVR 4000 NA.
▲ For inop ALS, increase S-34 Cat A/B visibility to RVR 5500.



MISSED APPROACH: Climb to 2500 on PVD VOR/DME R-321 to FOSTY INT and hold.

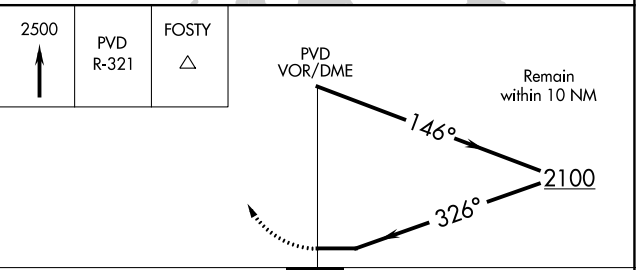
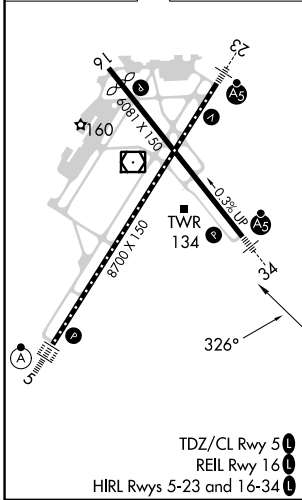
D-ATIS 124.2	PROVIDENCE APP CON * 123.675 244.875	PROVIDENCE TOWER * 120.7 (CTAF) 257.8	GND CON 121.9 348.6	CLNC DEL 126.65 348.6
------------------------	--	---	-------------------------------	---------------------------------



NE-1, 11 JUL 2024 to 08 AUG 2024

NE-1, 11 JUL 2024 to 08 AUG 2024

ELEV 54	D	TDZE 50
---------	----------	---------



CATEGORY	A	B	C	D
S-34	700/40	650 (700-3/4)	700-1 3/8	650 (700-1 1/8)
C CIRCLING	700-1	646 (700-1)	700-1 7/8 646 (700-1 1/8)	860-2 1/2 806 (900-2 1/2)