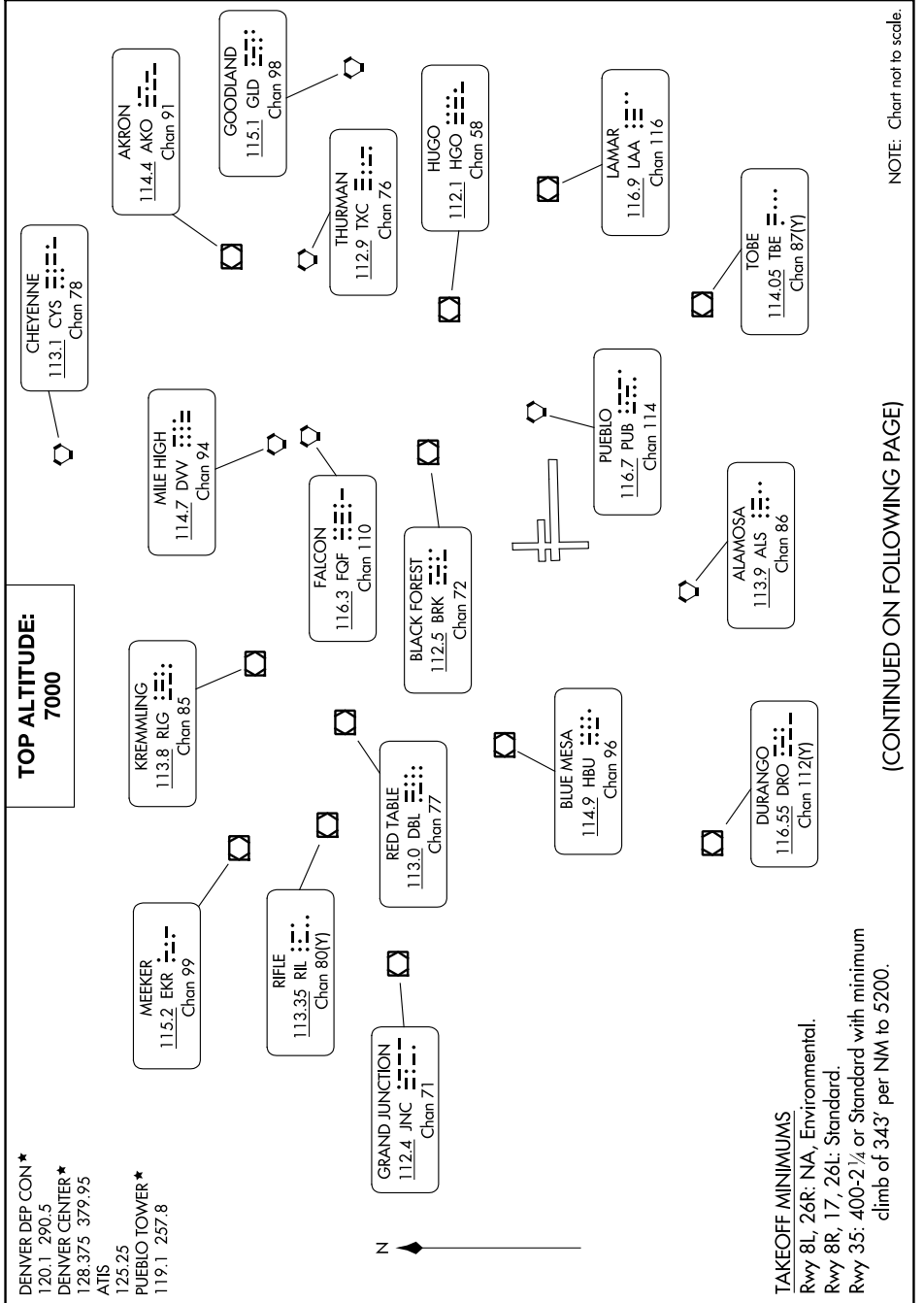


CANYON FOUR DEPARTURE

AL-334 (FAA)

PUEBLO MEML (PUB)
PUEBLO, COLORADO

SW-1, 11 JUL 2024 to 08 AUG 2024



CANYON FOUR DEPARTURE

(CANYN4.PUB) 21JUL16

PUEBLO, COLORADO
PUEBLO MEML (PUB)

(CONTINUED ON FOLLOWING PAGE)

SW-1, 11 JUL 2024 to 08 AUG 2024

TAKEOFF MINIMUMS
 Rwy 8L, 26R: NA, Environmental.
 Rwy 8R, 17, 26L: Standard.
 Rwy 35: 400-2 1/4 or Standard with minimum
 climb of 343' per NM to 5200.