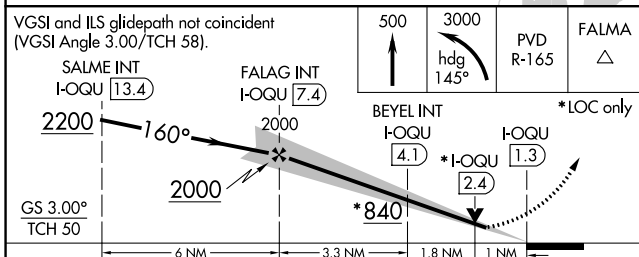
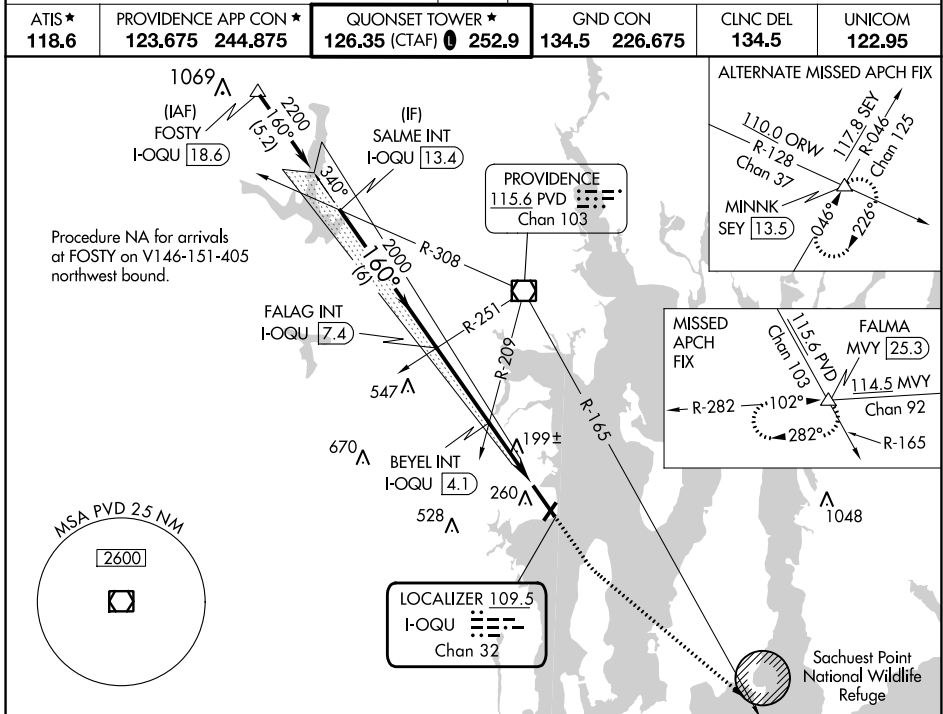


| | | |
|---|------------------------|---|
| LOC/DME I-OQU 109.5 Chan 32 | APP CRS 160° | Rwy ldg 7100 TDZE 18 Apt Elev 18 |
|---|------------------------|---|

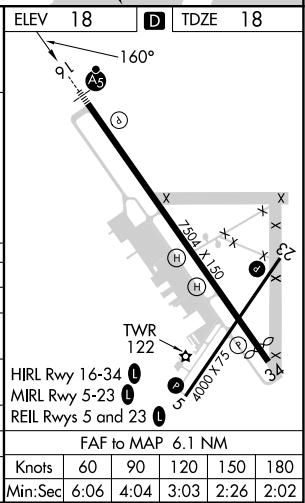
ILS or LOC RWY 16

QUONSET STATE (OQU)

| | | | | | |
|---|---------------|---|----------------------------|--|---|
| <p>Circling Rwy 5 NA at night. For inop ALS, increase S-LOC 16 Cat C/D visibility to 2½ SM.</p> | <p>MALS/R</p> | <p>MISSED APPROACH: Climb to 500 then climbing left turn to 3000 on heading 145° and PVD VOR/DME R-165 to FALMA and hold.</p> | | | |
| | | | <p>ATIS ★ 118.6</p> | <p>PROVIDENCE APP CON ★ 123.675 244.875</p> | <p>QUONSET TOWER ★ 126.35 (CTAF) 0 252.9</p> |



| CATEGORY | A | B | C | D |
|--------------------|------------------------|----------------------|------------------------|------------------------|
| S-ILS 16 | 218-½ 200 (200-½) | | | |
| S-LOC 16 | 840-½ 822 (900-½) | 840-¾ 822 (900-¾) | 840-1⅞ 822 (900-1⅞) | 822 (900-1⅞) |
| C CIRCLING | 840-1¼ 822 (900-1¼) | 822 (900-1¼) | 840-2½ 822 (900-2½) | 880-2¾ 862 (900-2¾) |
| BEYEL FIX MINIMUMS | | | | |
| S-LOC 16 | 460-½ 442 (500-½) | 442 (500-½) | 460-⅞ 442 (500-⅞) | 442 (500-⅞) |
| C CIRCLING | 620-1 602 (700-1) | 602 (700-1) | 620-1¾ 602 (700-1¾) | 880-2¾ 862 (900-2¾) |



NE-1, 11 JUL 2024 to 08 AUG 2024

NE-1, 11 JUL 2024 to 08 AUG 2024