

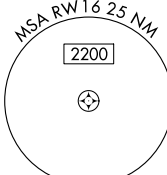
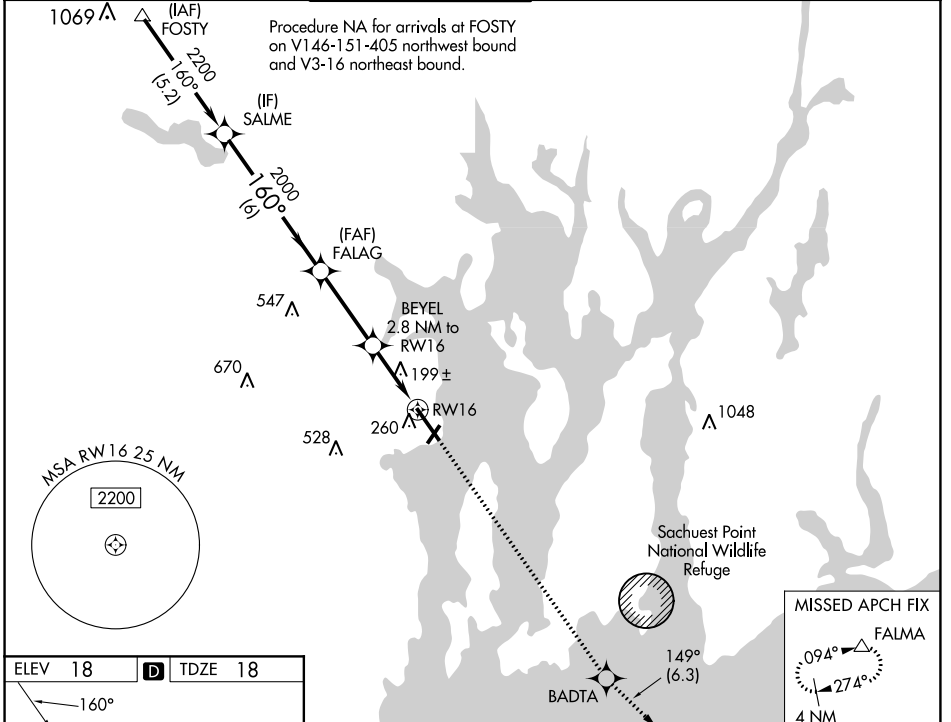
WAAS CH 93705 W16A	APP CRS 160°	Rwy Idg 7100 TDZE 18 Apt Elev 18
--	------------------------	---

RNAV (GPS) RWY 16

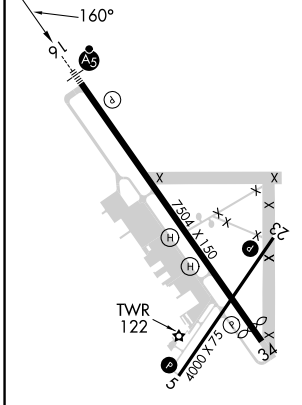
QUONSET STATE (OQU)

⚠ For uncompensated Baro-VNAV systems, LNAV/VNAV NA below -15°C (5°F) or above 54°C (130°F). Circling Rwy 5 NA at night. DME/DME RNP-0.3 NA.	MALSR 	MISSED APPROACH: Climb to 3000 direct BADTA and on track 149° to FALMA and hold.
---	-----------	--

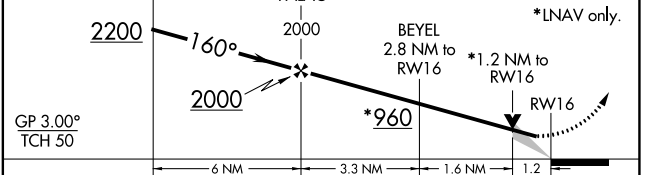
ATIS * 118.6	PROVIDENCE APP CON * 123.675 244.875	QUONSET TOWER * 126.35 (CTAF) 0 252.9	GND CON 134.5 226.675	CLNC DEL 134.5	UNICOM 122.95
---------------------	---	--	------------------------------	-----------------------	----------------------



ELEV 18	D	TDZE 18
---------	----------	---------



VGSI and RNAV glidepath not coincident (VGSI Angle 3.00/TCH 58).	3000	BADTA	tr 149°	FALMA
--	------	-------	---------	-------



GP 3.00° TCH 50				
CATEGORY	A	B	C	D
LPV DA	218-1/2 200 (200-1/2)			
LNAV/VNAV DA	442-3/4 424 (500-3/4)			
LNAV MDA	460-1/2 442 (500-1/2)			
C CIRCLING	620-1	602 (700-1)	620-1 3/4 602 (700-1 3/4)	880-2 3/4 862 (900-2 3/4)

HIRL Rwy 16-34 **1**
MIRL Rwy 5-23 **1**
REIL Rwy 5 and 23 **1**

NE-1, 11 JUL 2024 to 08 AUG 2024

NE-1, 11 JUL 2024 to 08 AUG 2024