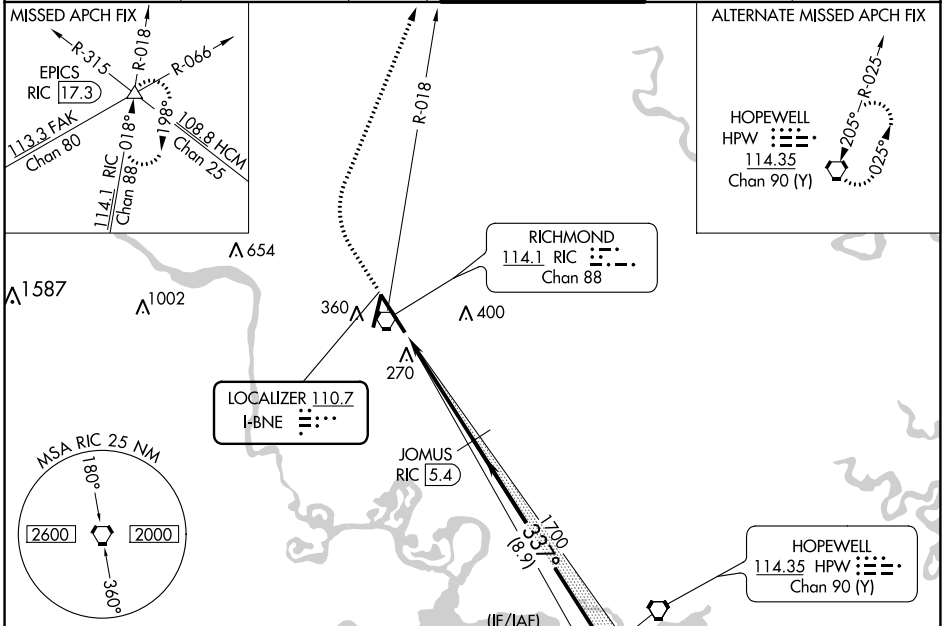


LOC I-BNE <b>110.7</b>	APP CRS <b>337°</b>	Rwy Idg TDZE <b>161</b> Apt Elev <b>168</b>
---------------------------	------------------------	---

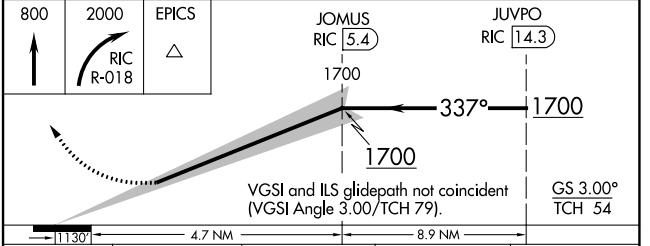
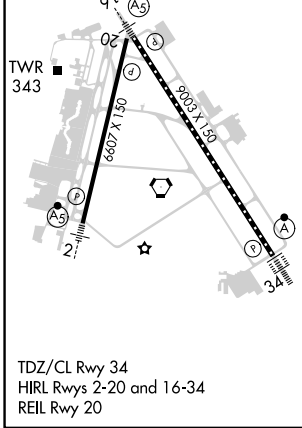
# ILS RWY 34 (CAT II & III)

RICHMOND INTL (RIC)

<p>▼ DME from RIC VORTAC. DME use requires simultaneous reception of I-BNE and RIC DME. CAT II: RVR 1000 authorized with specific OPSPEC, MSPEC, or LOA approval and use of autoland or HUD to touchdown.</p>		<p>ALSF-2</p>	<p>MISSED APPROACH: Climb to 800 then climbing right turn to 2000 on RIC VORTAC R-018 to EPICS INT/ RIC 17.3 DME and hold.</p>	
<p>ATIS <b>119.15 263.025</b></p>	<p>POTOMAC APP CON <b>126.4 282.375</b> (001°-185°) <b>126.75 307.2</b> (186°-360°)</p>	<p>RICHMOND TOWER <b>121.1 257.8</b></p>	<p>GND CON <b>121.9 348.6</b></p>	<p>CLNC DEL <b>127.55 348.6</b></p>



ELEV <b>168</b>	<b>D</b>	TDZE <b>161</b>
-----------------	----------	-----------------



CATEGORY	A	B	C	D
S-ILS 34	CAT II RA 101/12 100 DA 261			
S-ILS 34	CAT III RVR 07			

**CATEGORY II & III ILS-SPECIAL AIRCREW & AIRCRAFT CERTIFICATION REQUIRED**

NE-3, 11 JUL 2024 to 08 AUG 2024

NE-3, 11 JUL 2024 to 08 AUG 2024