

LOC I-BNE 110.7	APP CRS 337°	Rwy Idg TDZE Apt Elev	9003 161 168
---------------------------	------------------------	-----------------------------	---

ILS or LOC RWY 34

RICHMOND INTL (RIC)

DME required for LOC only.

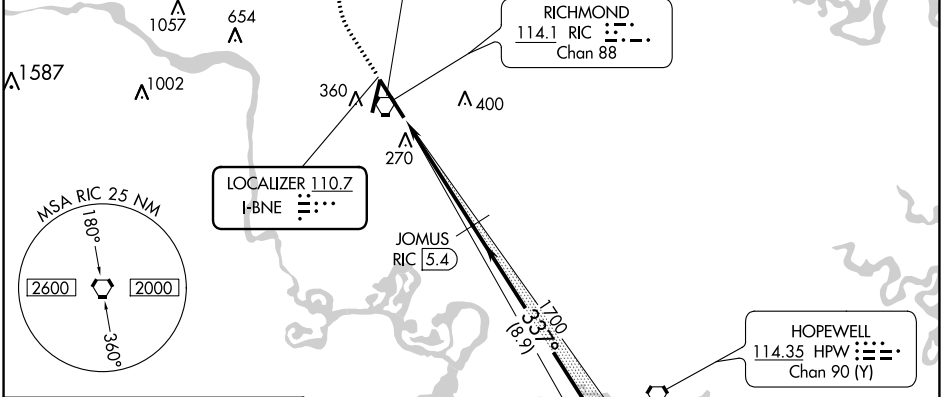
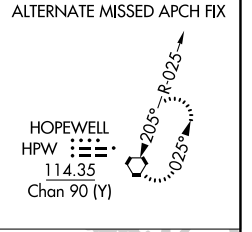
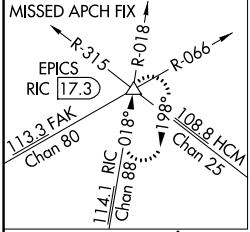
▼ For inop ALS, increase S-ILS 34 Cat E visibility to RVR 4000 and S-LOC 34 Cat E visibility to 1% SM. DME from RIC VORTAC. DME use requires simultaneous reception of I-BNE and RIC DME.

ALSF-2



MISSED APPROACH: Climb to 800 then climbing right turn to 2000 on RIC VORTAC R-018 to EPICS INT/RIC 17.3 DME and hold.

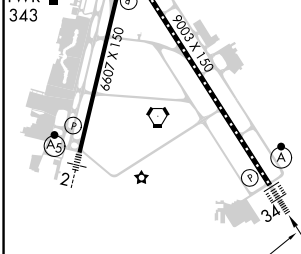
ATIS 119.15 263.025	POTOMAC APP CON 126.4 282.375 (001°-185°) 126.75 307.2 (186°-360°)	RICHMOND TOWER 121.1 257.8	GND CON 121.9 348.6	CLNC DEL 127.55 348.6
-------------------------------	--	--------------------------------------	-------------------------------	---------------------------------



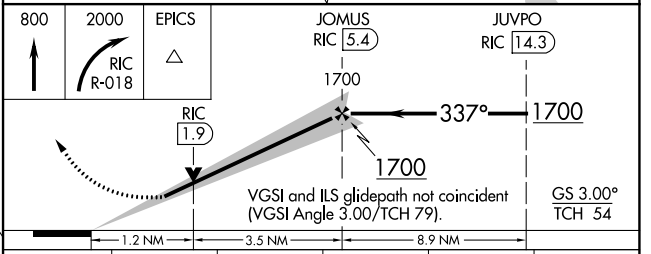
NE-3, 11 JUL 2024 to 08 AUG 2024

NE-3, 11 JUL 2024 to 08 AUG 2024

ELEV 168	D	TDZE 161
----------	----------	----------



TDZ/CL Rwy 34	HIRL Rws 2-20 and 16-34	REIL Rwy 20			
FAF to MAP 4.7 NM					
Knots	60	90	120	150	180
Min:Sec	4:42	3:08	2:21	1:53	1:34



CATEGORY	A	B	C	D	E
S-ILS 34	361/18		200 (200-½)		
S-LOC 34	620/24	459 (500-½)	620/45	459 (500-¾)	
C CIRCLING	660-1	492 (500-1)	700-1½ 532 (600-1½)	720-2 552 (600-2)	740-2 572 (600-2)