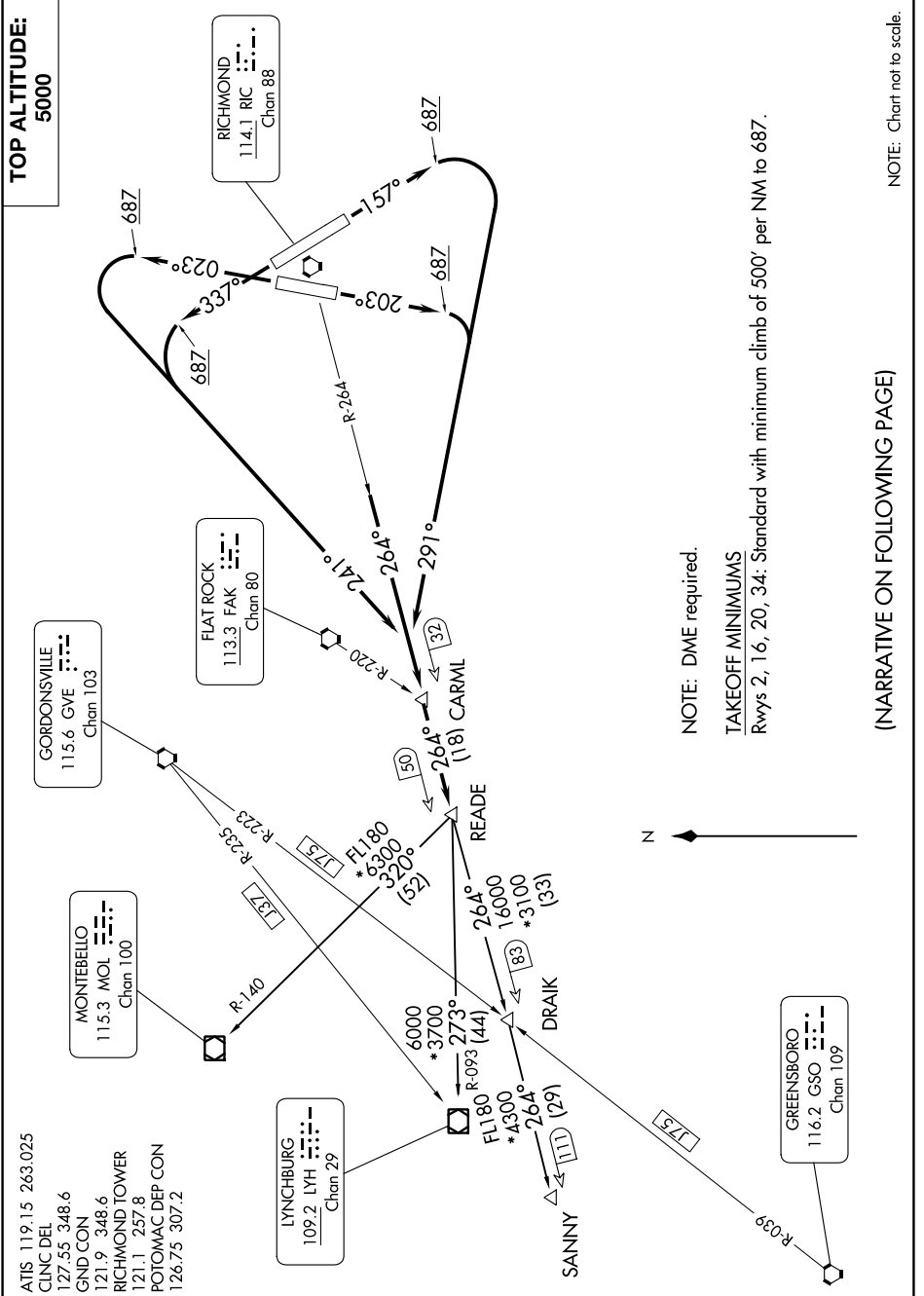


READE SEVEN DEPARTURE



- ATIS 119.15 263.025
- CLNC DEL 127.55 348.6
- GND CON 121.9 348.6
- RICHMOND TOWER 121.1 257.8
- POTOMAC DEP CON 126.75 307.2

READE SEVEN DEPARTURE

NOTE: DME required.
TAKEOFF MINIMUMS
Rwys 2, 16, 20, 34: Standard with minimum climb of 500' per NM to 687.

(NARRATIVE ON FOLLOWING PAGE)

NOTE: Chart not to scale.