

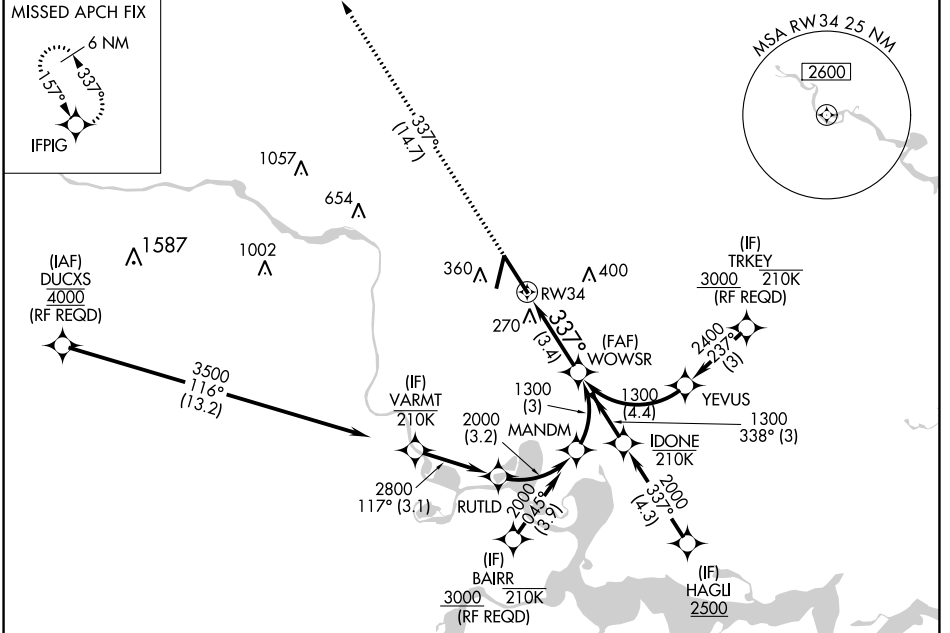
APP CRS	Rwy Idg	9003
337°	TDZE	161
	Apt Elev	168

RNAV (RNP) Y RWY 34

RICHMOND INTL (RIC)

RNP AR APCH.	ALSF-2	MISSED APPROACH: Climb to 2500 on track 337° to IFPIG and hold.
▼ For uncompensated Baro-VNAV systems, procedure NA below -11°C or above 54°C. For inop ALS, increase RNP 0.30 all Cats visibility to 1¼ SM.		

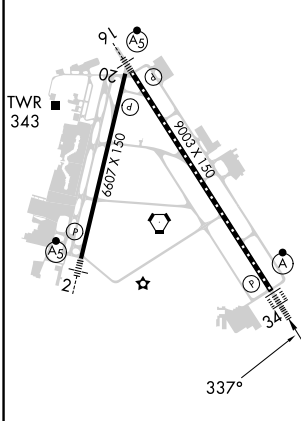
ATIS	POTOMAC APP CON	RICHMOND TOWER	GND CON	CLNC DEL
119.15 263.025	126.4 282.375 126.75 307.2 (186°-360°)	121.1 257.8	121.9 348.6	127.55 348.6



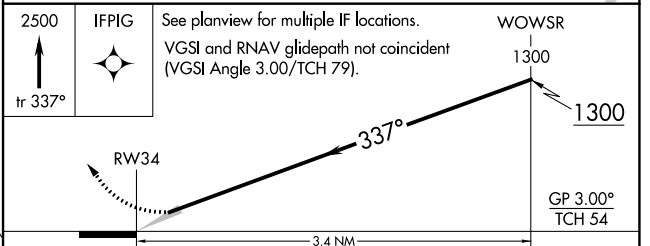
NE-3, 11 JUL 2024 to 08 AUG 2024

NE-3, 11 JUL 2024 to 08 AUG 2024

ELEV 168	D	TDZE 161
----------	----------	----------



TDZ/CL Rwy 34
HIRL Rwys 2-20 and 16-34
REIL Rwy 20



CATEGORY	A	B	C	D
RNP 0.11 DA		482/26	321 (400-½)	
RNP 0.30 DA		596/49	435 (500-1)	

AUTHORIZATION REQUIRED