

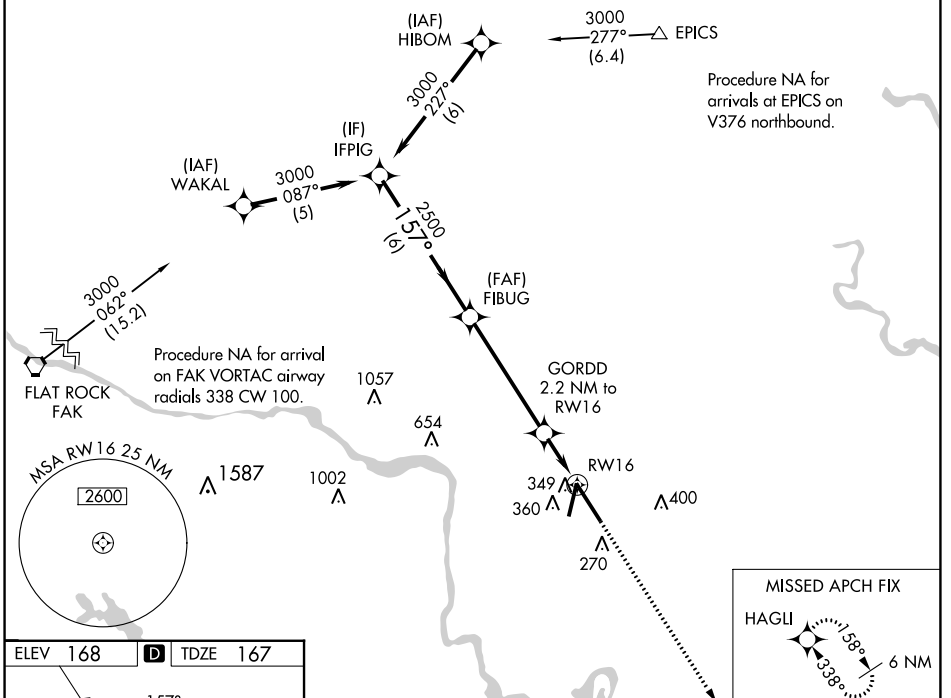
WAAS CH <b>72720</b> <b>W16A</b>	APP CRS <b>157°</b>	Rwy Idg TDZE <b>167</b> Apt Elev <b>168</b>	<b>9003</b>
--	------------------------	---	-------------

# RNAV (GPS) Z RWY 16

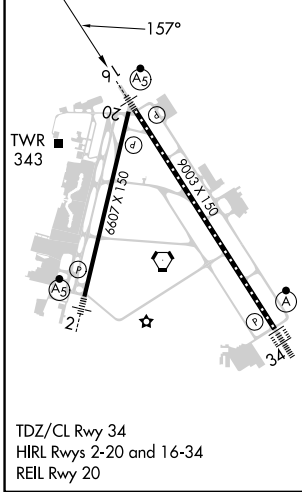
RICHMOND INTL (RIC)

RNP APCH: ▼ For uncompensated Baro-VNAV systems, LNAV/VNAV NA below -11°C (13°F) or above 54°C (130°F). For inop ALS increase LNAV/VNAV all Cats visibility to RVR 5400. ** RVR 1800 authorized with use of FD or AP or HUD to DA.	MALSR 	MISSED APPROACH: Climb to 2500 direct HAGLI and hold.
---	-----------	--

ATIS <b>119.15 263.025</b>	POTOMAC APP CON <b>126.4 282.375</b> (001°-185°) <b>126.75 307.2</b> (186°-360°)	RICHMOND TOWER <b>121.1 257.8</b>	GND CON <b>121.9 348.6</b>	CLNC DEL <b>127.55 348.6</b>
-------------------------------	--	--------------------------------------	-------------------------------	---------------------------------



ELEV <b>168</b>	<b>D</b> TDZE <b>167</b>
-----------------	--------------------------



	VGSi and RNAV glidepath not coincident (VGSi Angle 3.00/TCH 71).			2500 HAGLI *LNAV only.
	IFPIG 3000	FIBUG 2500	GORDD 2.2 NM to RW16	RW16 1.2 NM to RW16
	GP 3.00° TCH 54	2500	920*	
	6 NM	5 NM	1 NM	1.2 NM
CATEGORY	A	B	C	D
LPV DA **	367/24 200 (200-½)			
LNAV/VNAV DA	504/31 337 (400-¾)			
LNAV MDA	600/24	433 (500-½)	600/40	433 (500-¾)
<b>C</b> CIRCLING	660-1	492 (500-1)	700-1½ 532 (600-1½)	720-2 552 (600-2)

NE-3, 11 JUL 2024 to 08 AUG 2024

NE-3, 11 JUL 2024 to 08 AUG 2024