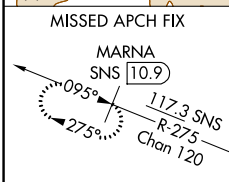
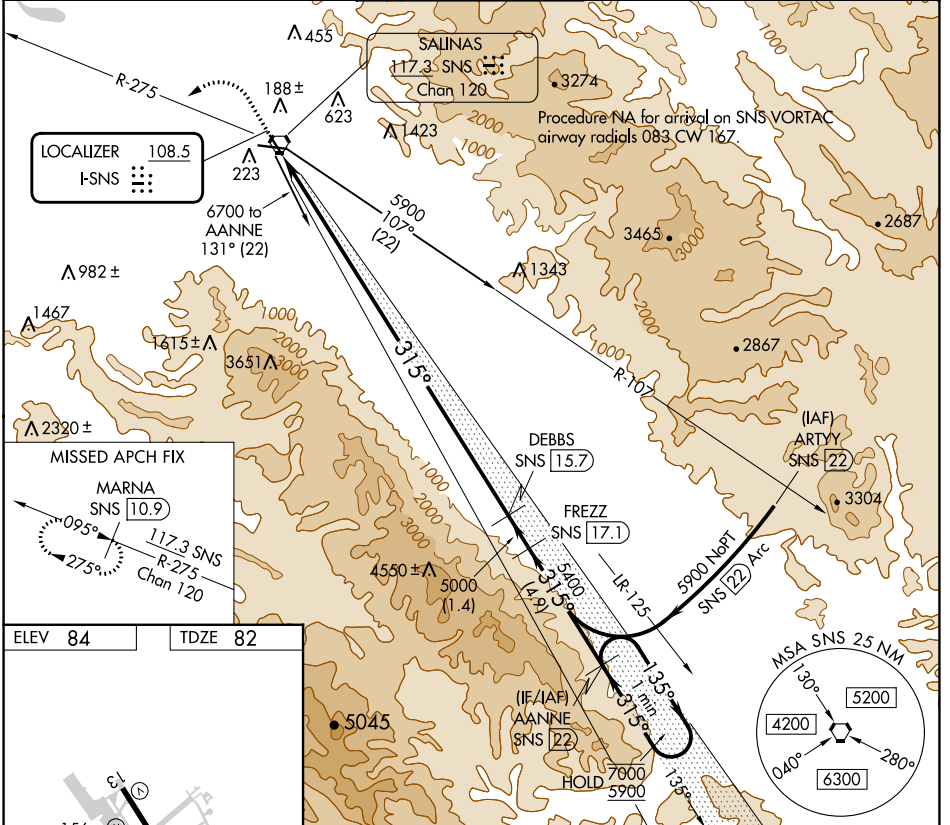


LOC I-SNS 108.5	APP CRS 315°	Rwy Idg TDZE Apt Elev	4825 82 84
---------------------------	------------------------	-----------------------------	---------------------------------------

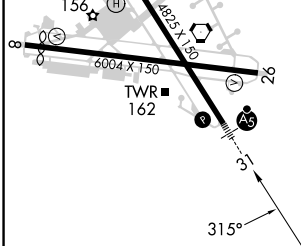
ILS RWY 31

SALINAS MUNI (SNS)

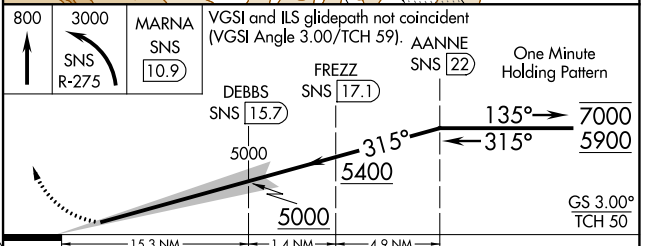
DME required.		MALSRS	MISSED APPROACH: Climb to 800, then climbing left turn to 3000 on SNS VORTAC R-275 to MARNA/SNS 10.9 DME and hold, continue climb-in-hold to 3000.	
ATIS 124.85	NORCAL APP CON 133.0 251.15	SALINAS TOWER* 119.525 (CTAF) 239.3	GND CON 121.7	UNICOM 123.0



ELEV 84	TDZE 82
---------	---------



HIRL Rwy 13-31
MIRL Rwy 8-26
REIL Rwy 13 and 26



CATEGORY	A	B	C	D
S-ILS 31	302/24 220 (300-1/2)			

SW-2, 11 JUL 2024 to 08 AUG 2024

SW-2, 11 JUL 2024 to 08 AUG 2024