

QERVO ONE ARRIVAL (RNAV) Transition Routes

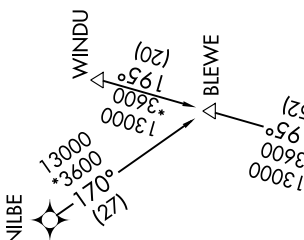
SAN ANTONIO, TEXAS

SC-3, 11 JUL 2024 to 08 AUG 2024

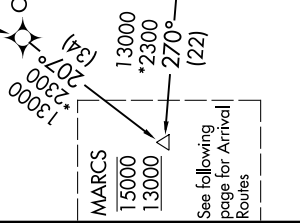
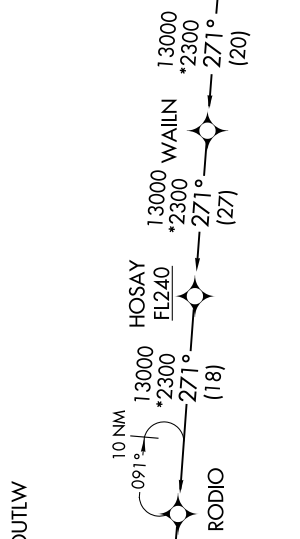
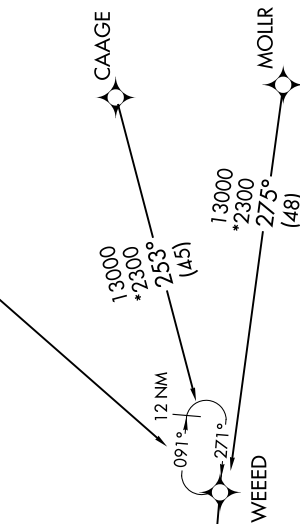
- BLEWE TRANSITION (BLEWE.QERVO1)
- CAAGE TRANSITION (CAAGE.QERVO1)
- LEAD TRANSITION (LEAD.QERVO1)
- MOLLR TRANSITION (MOLLR.QERVO1)
- NILBE TRANSITION (NILBE.QERVO1)
- WAILN TRANSITION (WAILN.QERVO1)
- WINDU TRANSITION (WINDU.QERVO1)

RNAV 1-DME/DME/IRU or GPS.  
RADAR required.

SAN ANTONIO APP CON  
127.1 269.1  
BAZ ATIS  
119 325  
KRND ATIS\*  
290.525  
KSKF ATIS  
120.45 273.5  
SAT D-ATIS  
118.9  
SSF ATIS  
128.8



NOTE: Jet and turboprop aircraft only.  
NOTE: WAILN Transition for Houston terminal Area Departures only.



See following page for Arrival Routes

(CONTINUED ON FOLLOWING PAGE)

NOTE: Chart not to scale.

SC-3, 11 JUL 2024 to 08 AUG 2024

QERVO ONE ARRIVAL (RNAV) Transition Routes

SAN ANTONIO, TEXAS