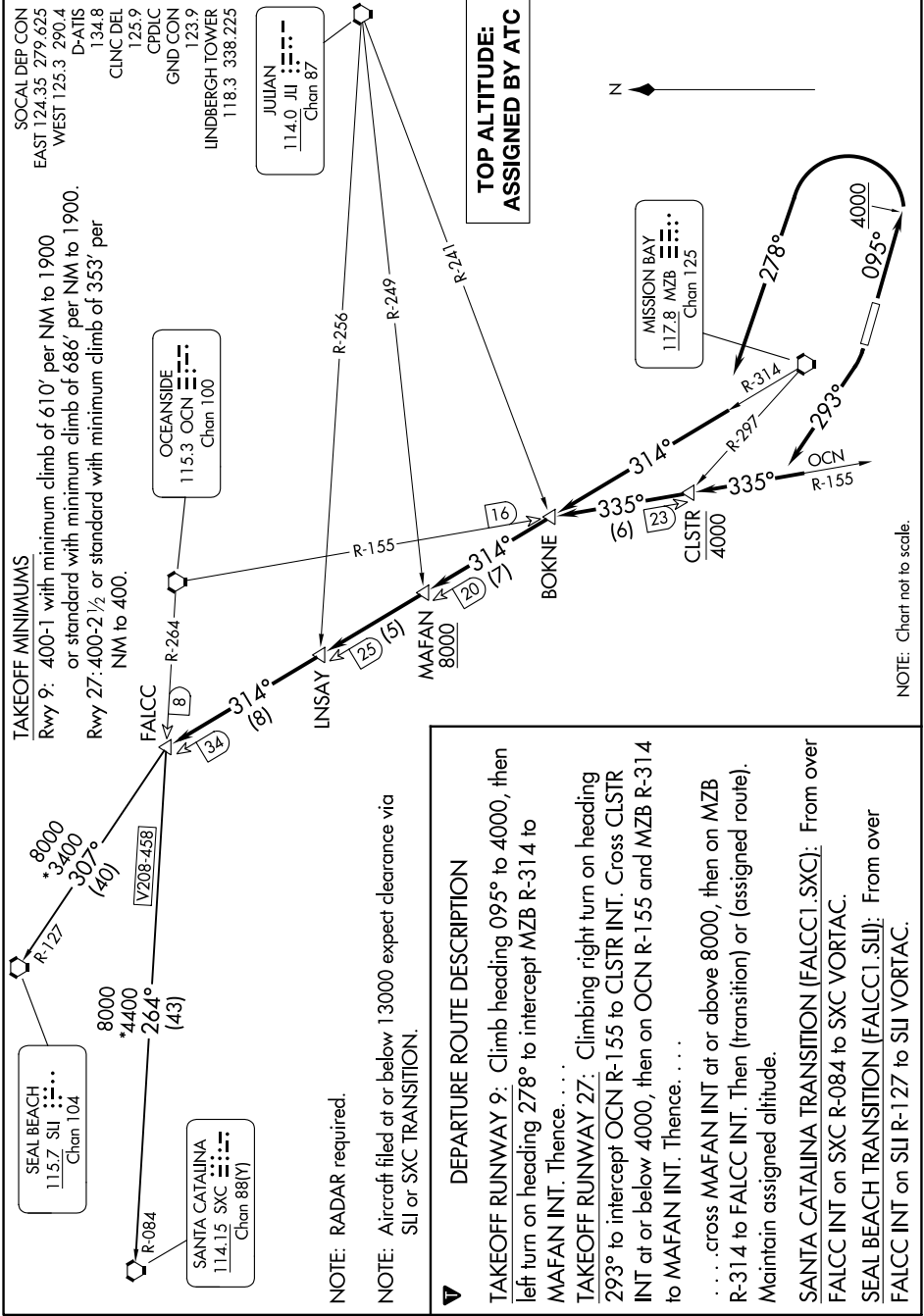


# FALCC ONE DEPARTURE

AL-373 (FAA)

SAN DIEGO INTL (SAN)  
SAN DIEGO, CALIFORNIA

SW-3, 11 JUL 2024 to 08 AUG 2024



SOCAL DEP CON  
EAST 124.35 279.625  
WEST 125.3 290.4  
D-ATIS 134.8  
CLNC DEL 125.9  
CPDIC 123.9  
GND CON 118.3 338.225  
LINDBERGH TOWER

JULIAN  
114.0 JII  
Chan 87

OCEANSIDE  
115.3 OCN  
Chan 100

MISSION BAY  
117.8 MZB  
Chan 125

TOP ALTITUDE:  
ASSIGNED BY ATC

**TAKEOFF MINIMUMS**  
Rwy 9: 400-1 with minimum climb of 610' per NM to 1900  
or standard with minimum climb of 686' per NM to 1900.  
Rwy 27: 400-2 1/2 or standard with minimum climb of 353' per  
NM to 400.

NOTE: RADAR required.  
NOTE: Aircraft filed at or below 13000 expect clearance via  
SLI or SXC TRANSITION.

**DEPARTURE ROUTE DESCRIPTION**  
**TAKEOFF RUNWAY 9:** Climb heading 095° to 4000, then left turn on heading 278° to intercept MZB R-314 to MAFAN INT. Thence. . . .  
**TAKEOFF RUNWAY 27:** Climbing right turn on heading 293° to intercept OCN R-155 to CLSTR INT. Cross CLSTR INT at or below 4000, then on OCN R-155 and MZB R-314 to MAFAN INT. Thence. . . .  
. . . . cross MAFAN INT at or above 8000, then on MZB R-314 to FALCC INT. Then (transition) or (assigned route). Maintain assigned altitude.  
**SANTA CATALINA TRANSITION (FALCC1.SXC):** From over FALCC INT on SXC R-084 to SXC VORTAC.  
**SEAL BEACH TRANSITION (FALCC1.SLI):** From over FALCC INT on SLI R-127 to SLI VORTAC.

NOTE: Chart not to scale.

SW-3, 11 JUL 2024 to 08 AUG 2024