

| | | |
|---|------------------------|---|
| LOC/DME I-SAN 111.55 Chan 52 (Y) | APP CRS 095° | Rwy Idg 7280 TDZE 17 Apt Elev 17 |
|---|------------------------|---|

ILS Y or LOC Y RWY 9

SAN DIEGO INTL (SAN)

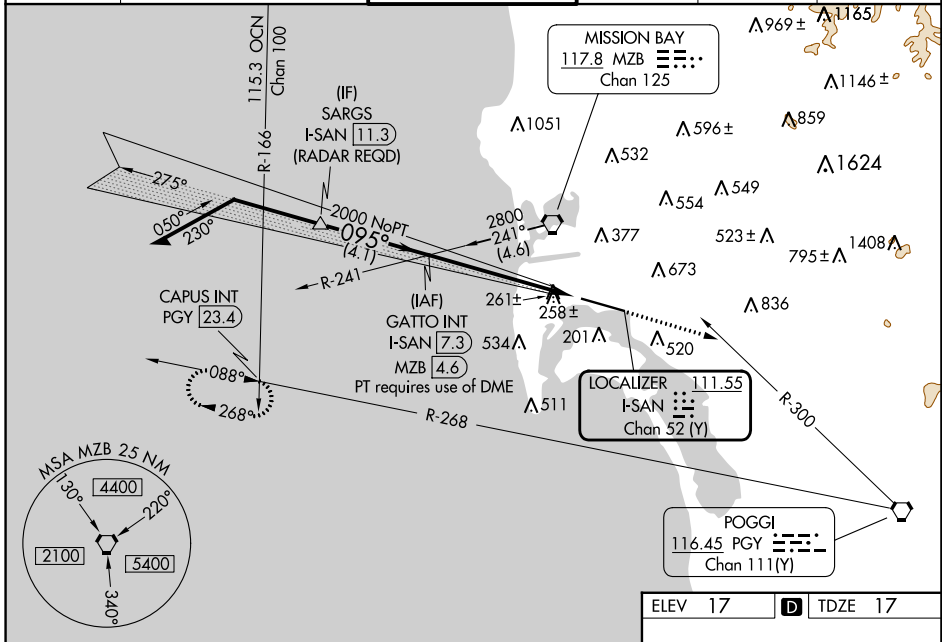
⚠ Circling NA north of Rwy 9-27. Autopilot coupled approach NA below 530. When Circling to Rwy 27 at night, operational VGSB required, remain on or above VGSB glidepath until threshold. For inop ALS, increase S-ILS 9 all Cats visibility to 2½ SM. Rwy 9 helicopter visibility reduction below RVR 4000 NA. #Inop table does not apply to S-ILS 9.

MALSR



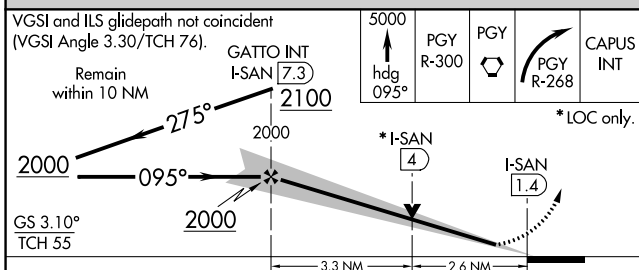
MISSED APPROACH: Climb to 5000 on heading 095° and on PGY VORTAC R-300 to PGY VORTAC, then right turn on PGY VORTAC R-268 to CAPUS INT/23.4 DME and hold. #Missed approach requires minimum climb of 270 feet per NM to 4000.

| | | | | | |
|------------------------|--|---|-------------------------|--------------------------|-------|
| D-ATIS 134.8 | SOCAL APP CON 119.6 363.1 (WEST) 124.35 279.625 (EAST) | LINDBERGH TOWER 118.3 338.225 | GND CON 123.9 | CLNC DEL 125.9 | CPDLC |
|------------------------|--|---|-------------------------|--------------------------|-------|



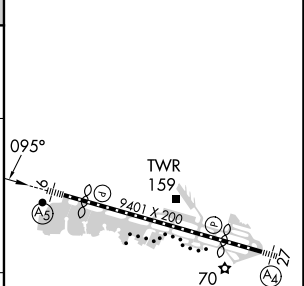
SW-3, 11 JUL 2024 to 08 AUG 2024

SW-3, 11 JUL 2024 to 08 AUG 2024



| | |
|---------|------------------|
| ELEV 17 | D TDZE 17 |
|---------|------------------|

| CATEGORY | A | B | C | D |
|-------------------|----------------------|----------------------|--------------------|---|
| S-ILS 9# | 258/40 241 (300-¾) | | | |
| S-ILS 9 | 751-2 734 (800-2) | | | |
| S-LOC 9 | 960/40 943 (1000-¾) | 960-2 943 (1000-2) | | |
| C CIRCLING | 960-1¼ 943 (1000-1¼) | 960-2¾ 943 (1000-2¾) | 960-3 943 (1000-3) | |



| | | | | | |
|---------------------------------------|------|------|------|------|------|
| TDZ/CL Rwys 9 and 27 HIRL Rwy 9-27 | | | | | |
| FAF to MAP 5.9 NM | | | | | |
| Knots | 60 | 90 | 120 | 150 | 180 |
| Min:Sec | 5:54 | 3:56 | 2:57 | 2:22 | 1:58 |