

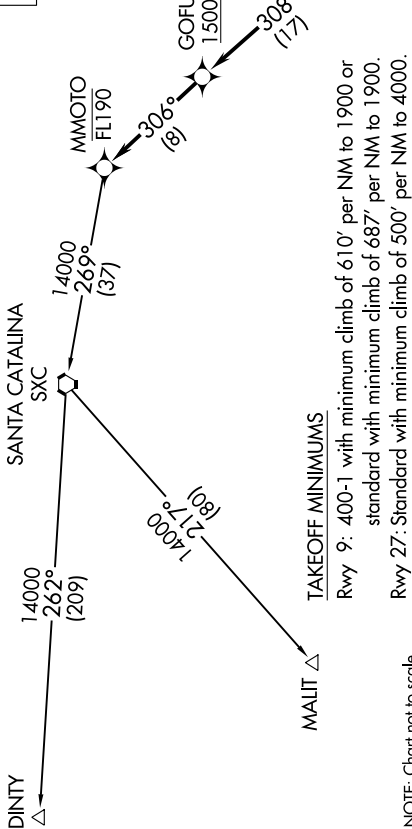
# MMOTO TWO DEPARTURE (RNAV)

AL-373 (FAA)

SAN DIEGO INTL (SAN)  
SAN DIEGO, CALIFORNIA

D-ATIS  
134.8  
CLNC DEL  
125.9  
CPDLC  
GND CON  
123.9  
LINDBERGH TOWER  
118.3 338.225  
SOCAL DEP CON  
124.35 279.625 (EAST)  
125.3 290.4 (WEST)

### TOP ALTITUDE: ASSIGNED BY ATC



#### TAKEOFF MINIMUMS

Rwy 9: 400-1 with minimum climb of 610' per NM to 1900 or standard with minimum climb of 687' per NM to 1900.  
Rwy 27: Standard with minimum climb of 500' per NM to 4000.

NOTE: Chart not to scale.

#### DEPARTURE ROUTE DESCRIPTION

**TAKEOFF RUNWAY 9:** Climb heading 095° to 4000, then left turn direct BAUCA, then on track 307° to ECHHO, then on track 308° to cross GOFUR at or above 15000, then on track 306° to cross MMOTO at or below FL190, thence. . . .

**TAKEOFF RUNWAY 27:** Climb heading 275° to 520, then right turn direct LANDN, then on track 330° to ECHHO, then on track 308° to cross GOFUR at or above 15000, then on track 306° to cross MMOTO at or below FL190, thence. . . .

. . . on (transition) maintain altitude assigned by ATC, expect filed altitude 10 minutes after departure.

DINTY TRANSITION (MMOTO2.DINTY)

MALIT TRANSITION (MMOTO2.MALIT)

NOTE: RADAR required.

NOTE: RNAV 1.

NOTE: GPS required.

NOTE: If unable altitude restriction at GOFUR, advise ATC on initial contact.

NOTE: DINTY transition ATC only.