

WAAS CH <b>49237</b> <b>W09A</b>	APP CRS <b>095°</b>	Rwy Idg <b>7280</b> TDZE <b>17</b> Apt Elev <b>17</b>
--	------------------------	---

# RNAV (GPS) RWY 9

SAN DIEGO INTL (SAN)

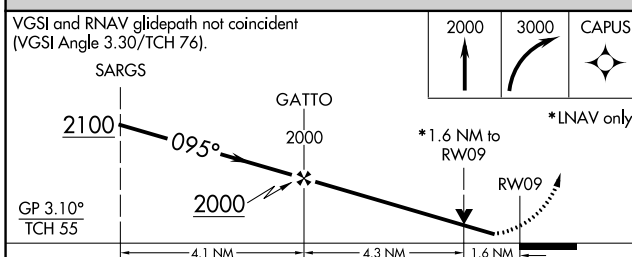
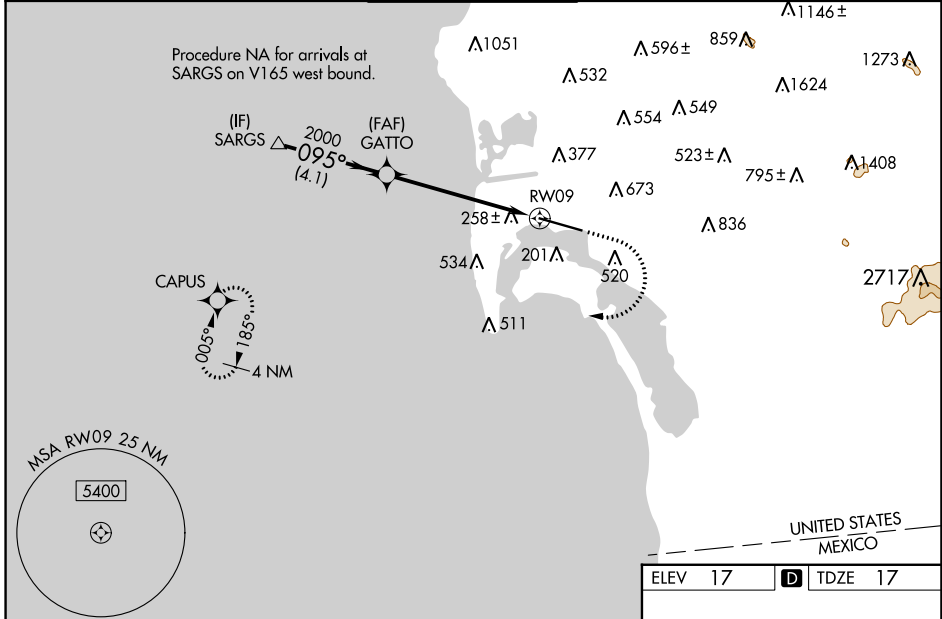
**RNP APCH.**

**⚠** Circling NA north of Rwy 9-27. For uncompensated Baro-VNAV systems, LNAV/VNAV NA below 6°C or above 47°C. When Circling to Rwy 27 at night, operational VGSI required, remain on or above VGSI glidepath until threshold. Rwy 9 helicopter visibility reduction below RVR 4000 NA. Inop table does not apply to LPV all Cats. For inop ALS, increase LNAV Cats A/B visibility to RVR 5500.

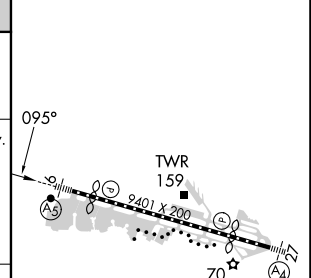
**MALSR**

**MISSED APPROACH:** Climb to 2000 then climbing right turn to 3000 direct CAPUS and hold.

D-ATIS <b>134.8</b>	SOCAL APP CON <b>119.6 363.1 (WEST)</b> <b>124.35 279.625 (EAST)</b>	<b>LINDBERGH TOWER</b> <b>118.3 338.225</b>	GND CON <b>123.9</b>	CLNC DEL <b>125.9</b>	CPDLC
------------------------	--	--	-------------------------	--------------------------	-------



ELEV 17	<b>D</b> TDZE 17
---------	------------------



CATEGORY	A	B	C	D
LPV DA		262/40	245 (300-¾)	
LNAV/VNAV DA		621-1½	604 (700-1½)	
LNAV MDA	600/40	583 (600-¾)	600-1¼	583 (600-1¼)
<b>C</b> CIRCLING	800-1 783 (800-1)	820-1 803 (900-1)	820-2¼ 803 (900-2¼)	940-3 923 (1000-3)

TDZ/CL Rwy 9 and 27  
HIRL Rwy 9-27

SW-3, 11 JUL 2024 to 08 AUG 2024

SW-3, 11 JUL 2024 to 08 AUG 2024